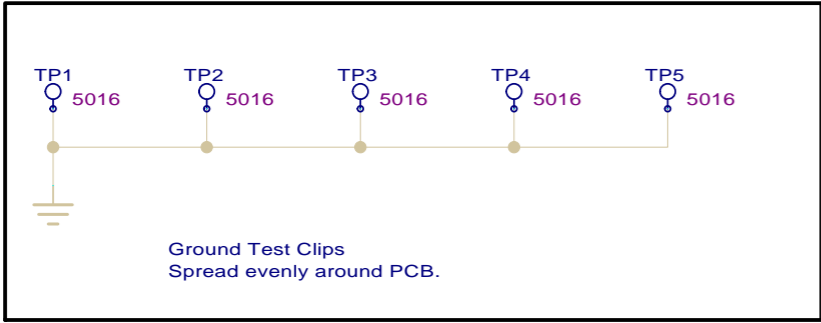
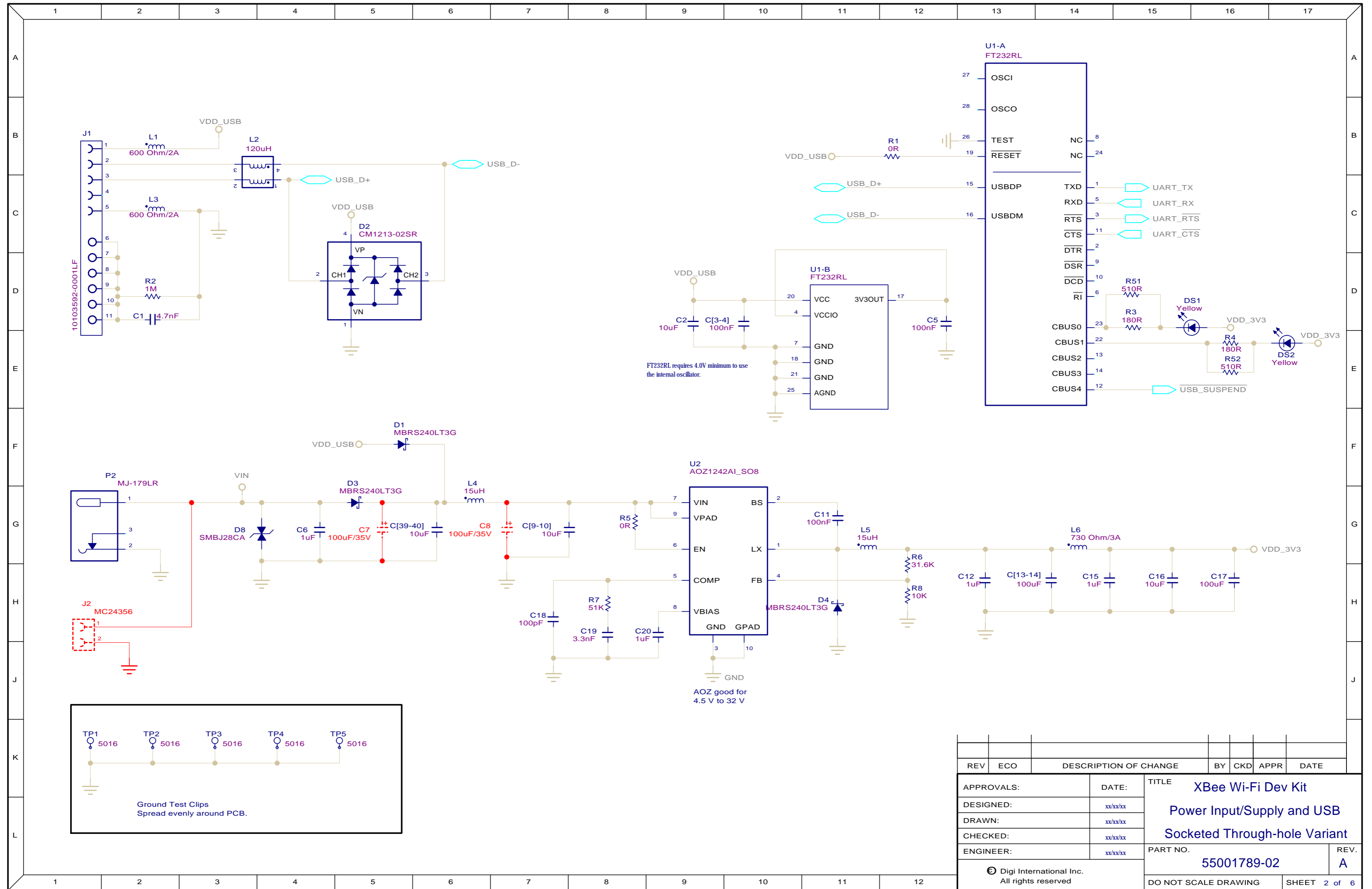


REV	ECO	DESCRIPTION OF CHANGE	BY	CKD	APPR	DATE
APPROVALS:		DATE:	TITLE			
DESIGNED:		xx/xx/xx	XBee Wi-Fi Dev Kit			
DRAWN:		xx/xx/xx	Block Diagram			
CHECKED:		xx/xx/xx	Socketed Through-hole Variant			
ENGINEER:		xx/xx/xx	PART NO.		REV.	
			55001789-02		A	
© Digi International Inc. All rights reserved			DO NOT SCALE DRAWING		SHEET 1 of 6	



REV	ECO	DESCRIPTION OF CHANGE	BY	CKD	APPR	DATE
APPROVALS:		DATE:	TITLE			
DESIGNED:		xx/xx/xx	Xbee Wi-Fi Dev Kit			
DRAWN:		xx/xx/xx	Power Input/Supply and USB			
CHECKED:		xx/xx/xx	Socketed Through-hole Variant			
ENGINEER:		xx/xx/xx	PART NO.		REV.	
© Digi International Inc. All rights reserved		55001789-02		A		
DO NOT SCALE DRAWING						SHEET 2 of 6

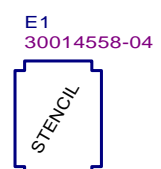
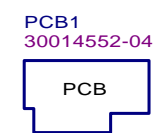
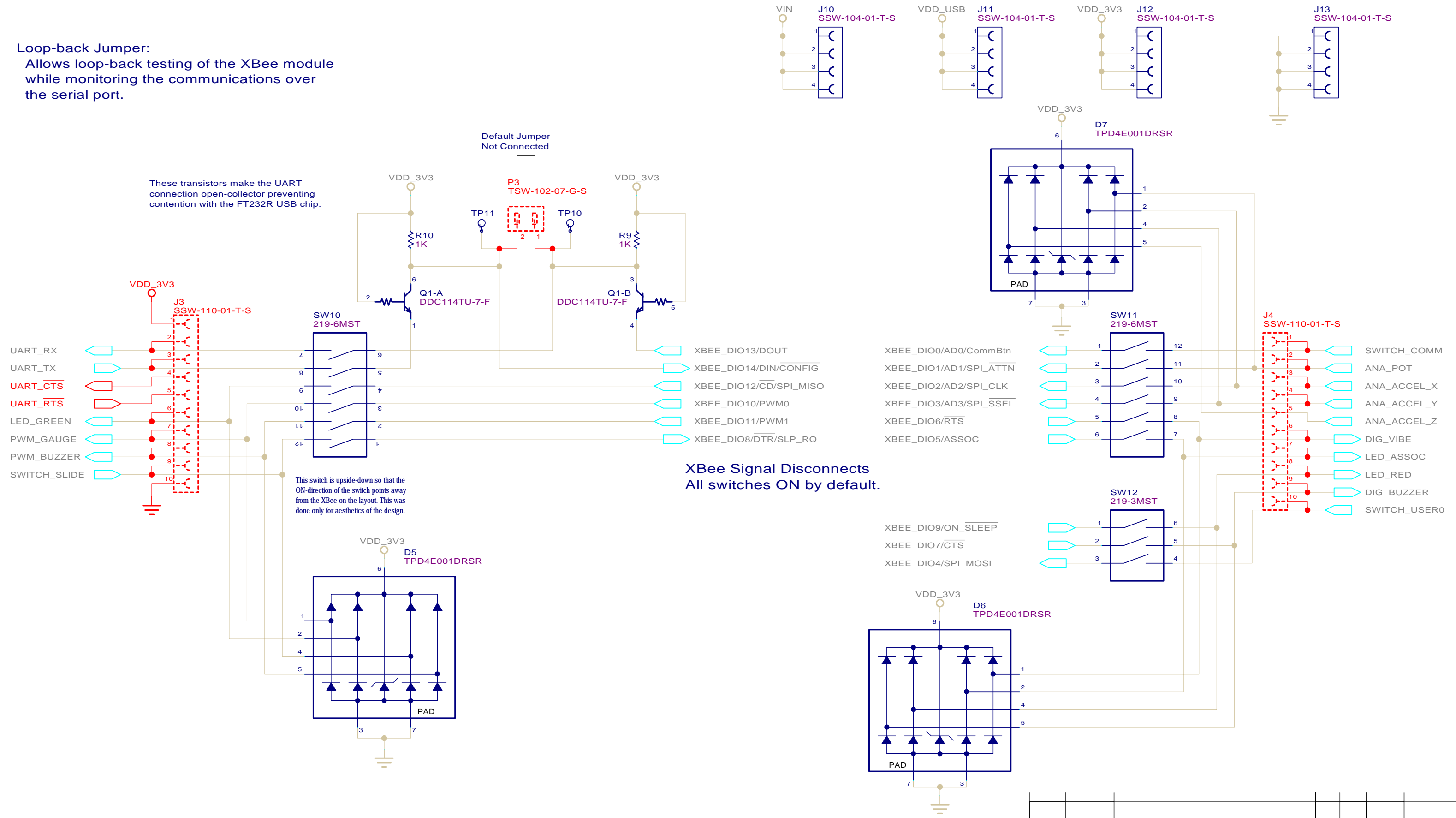
Loop-back Jumper:
Allows loop-back testing of the XBee module while monitoring the communications over the serial port.

These transistors make the UART connection open-collector preventing contention with the FT232R USB chip.

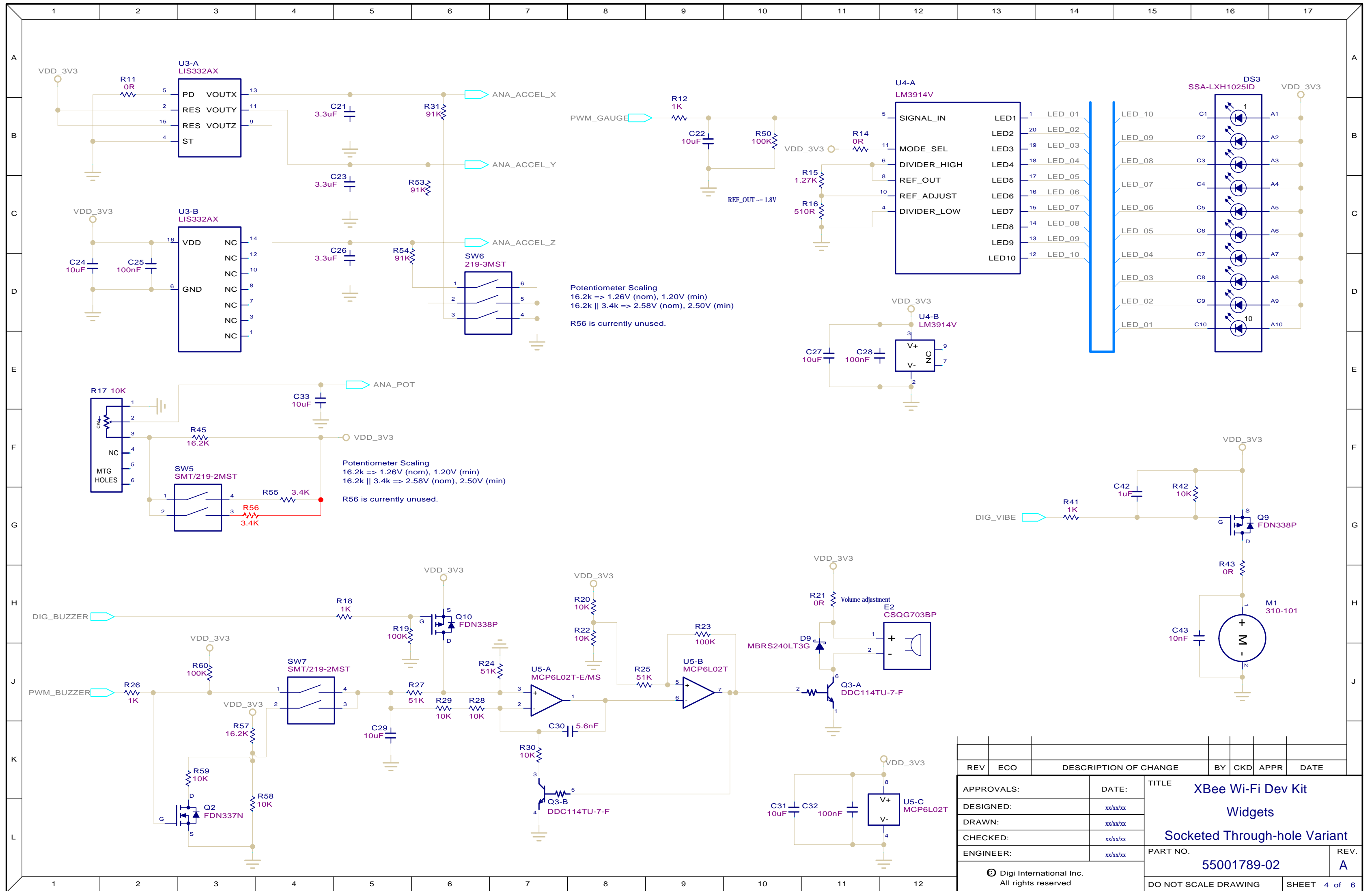
Default Jumper Not Connected

XBee Signal Disconnects
All switches ON by default.

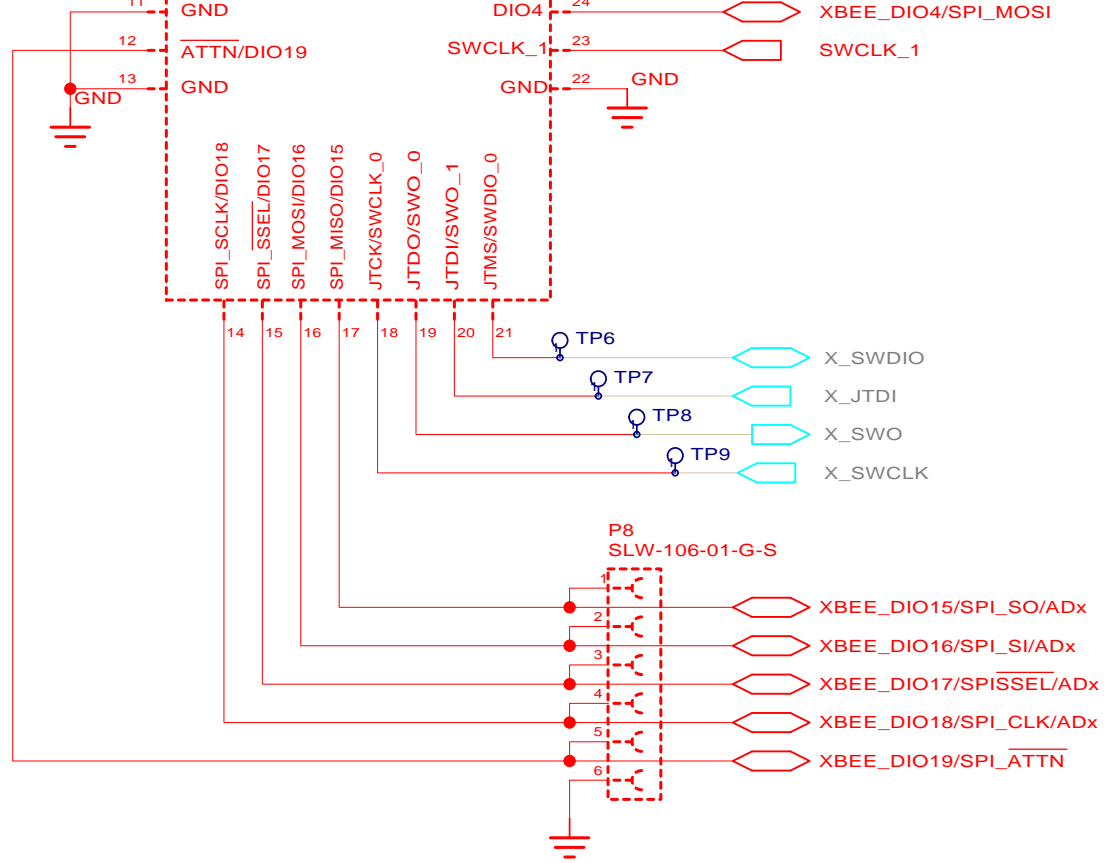
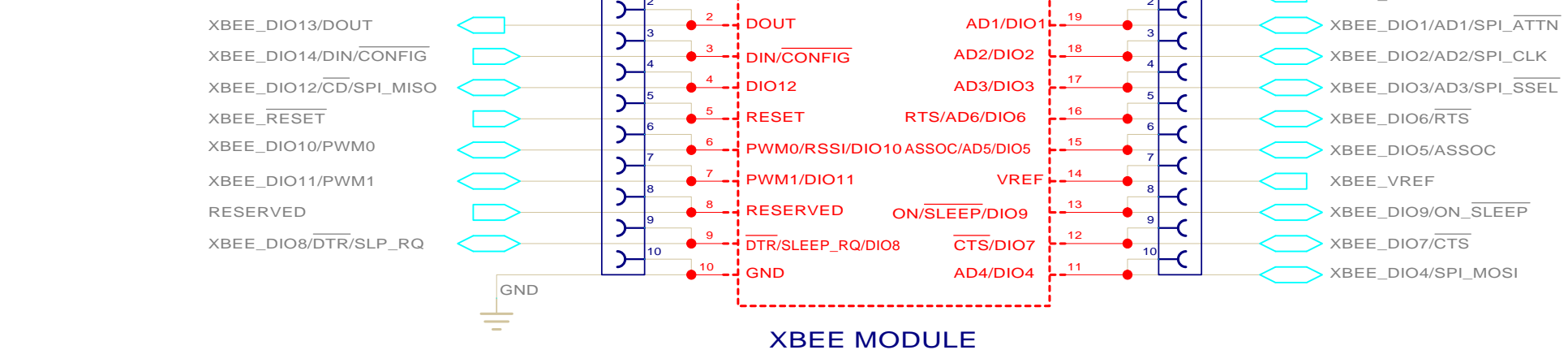
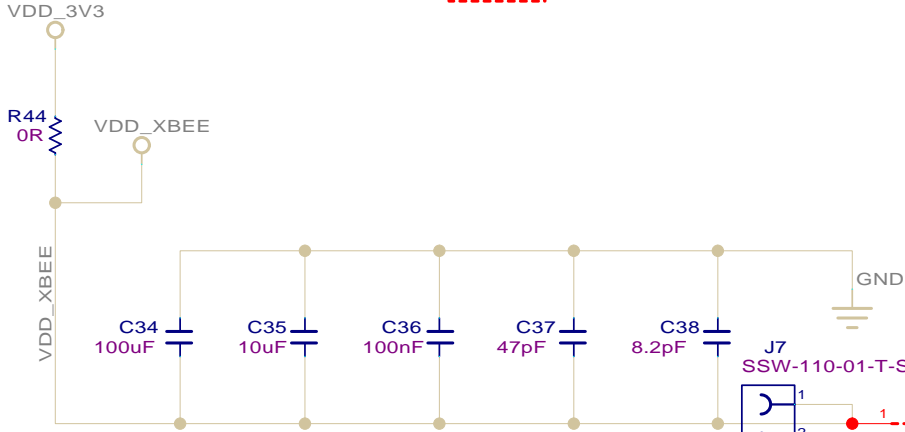
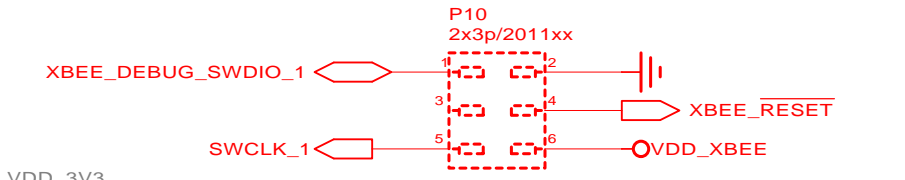
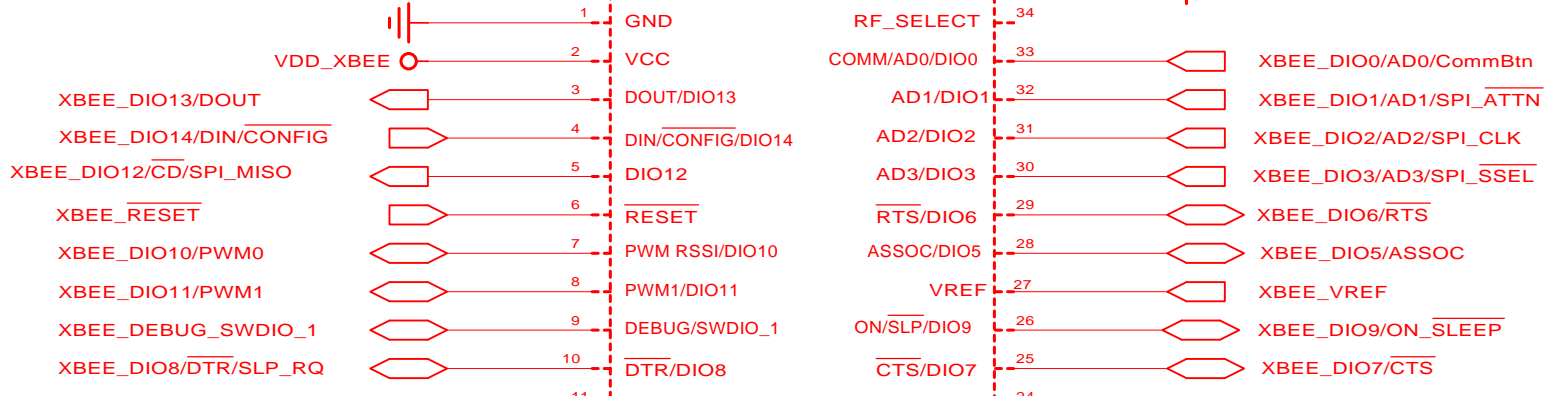
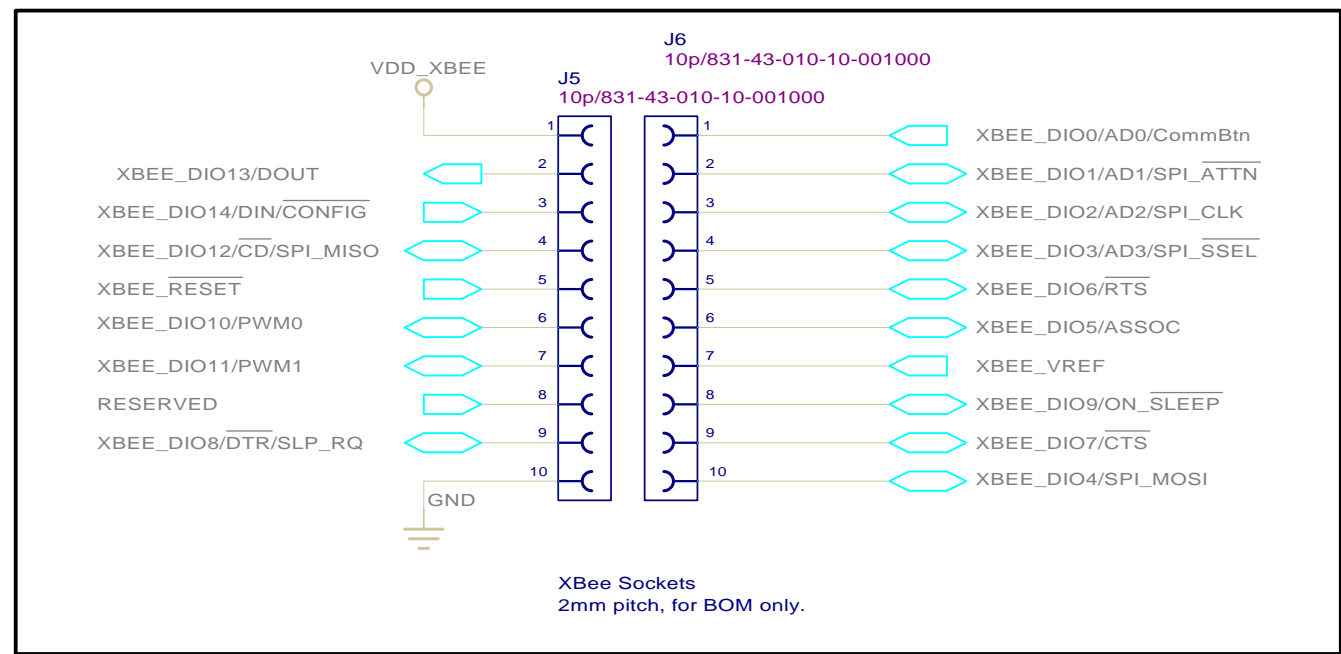
This switch is upside-down so that the ON-direction of the switch points away from the XBee on the layout. This was done only for aesthetics of the design.



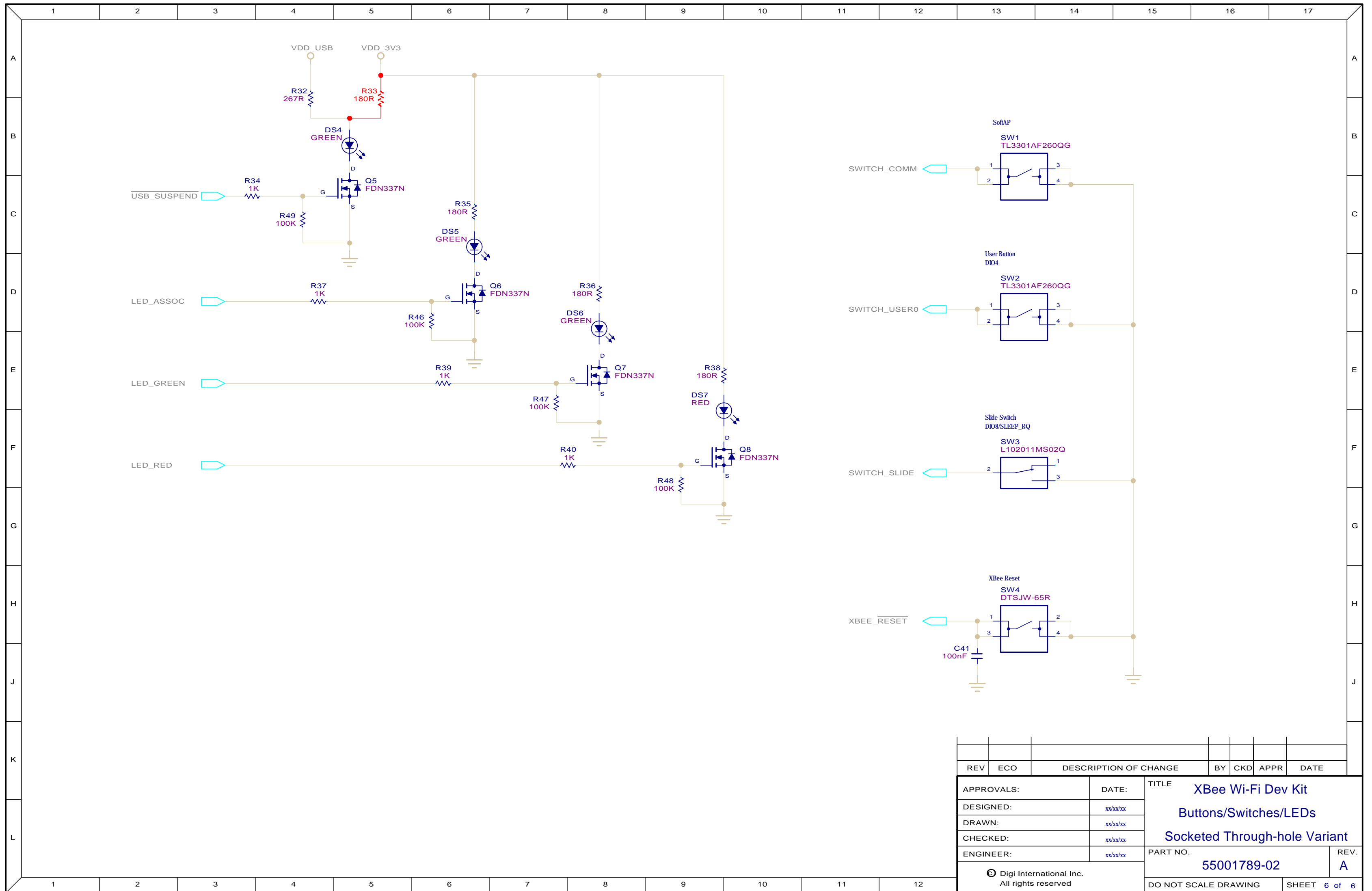
REV	ECO	DESCRIPTION OF CHANGE	BY	CKD	APPR	DATE
APPROVALS:						
DESIGNED:		DATE:		TITLE		
DRAWN:		xx/xx/xx		XBee Wi-Fi Dev Kit		
CHECKED:		xx/xx/xx		Mechanicals/Headers		
ENGINEER:		xx/xx/xx		Socketed Through-hole Variant		
© Digi International Inc. All rights reserved.				PART NO.		REV.
				55001789-02		A
DO NOT SCALE DRAWING					SHEET 3 of 6	



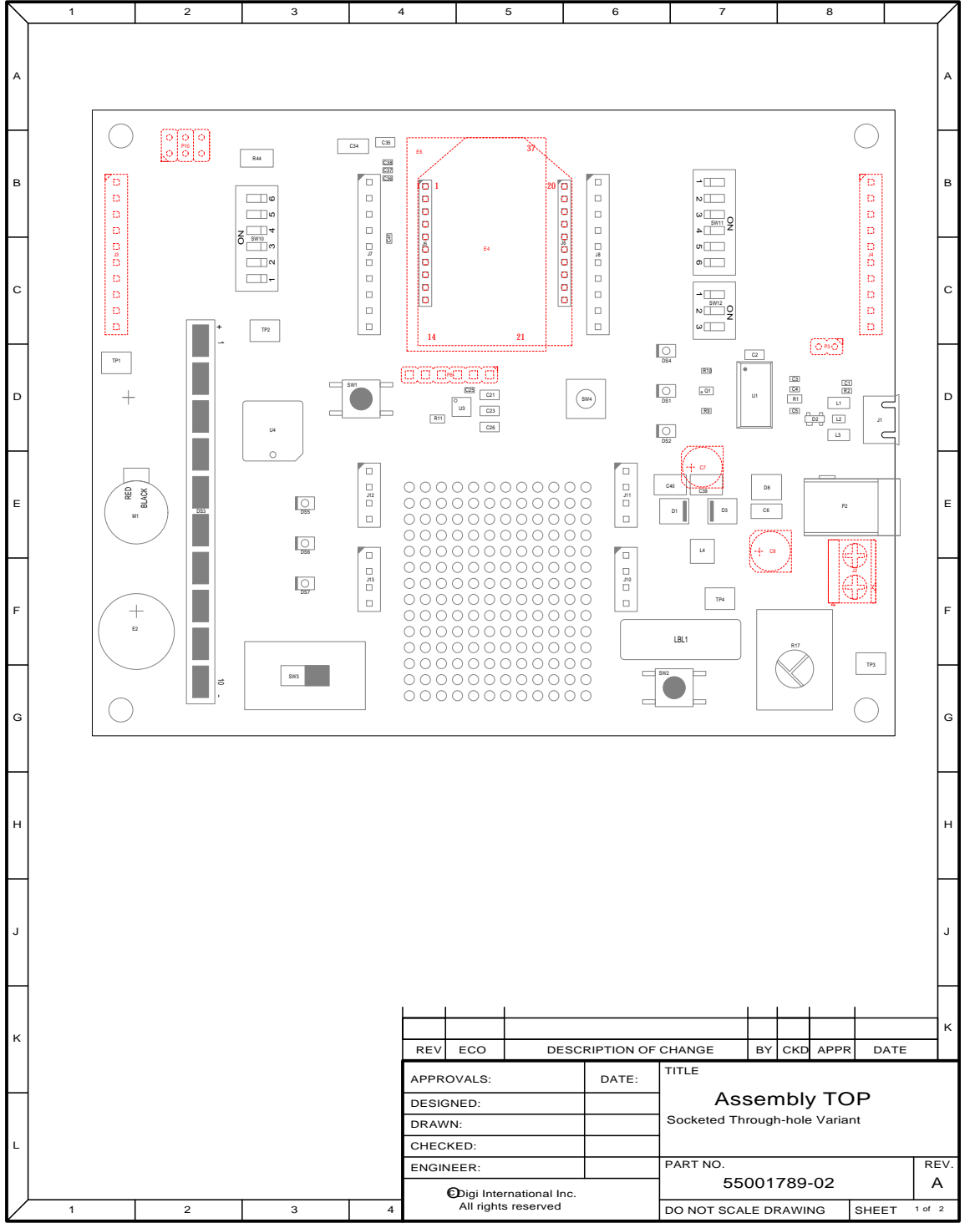
REV	ECO	DESCRIPTION OF CHANGE	BY	CKD	APPR	DATE
APPROVALS:		DATE:	TITLE			
DESIGNED:		xx/xx/xx	XBee Wi-Fi Dev Kit			
DRAWN:		xx/xx/xx	Widgets			
CHECKED:		xx/xx/xx	Socketed Through-hole Variant			
ENGINEER:		xx/xx/xx	PART NO.		REV.	
			55001789-02		A	
© Digi International Inc. All rights reserved.			DO NOT SCALE DRAWING		SHEET 4 of 6	



REV	ECO	DESCRIPTION OF CHANGE	BY	CKD	APPR	DATE
APPROVALS:						
DESIGNED:						
DRAWN:						
CHECKED:						
ENGINEER:						
DATE:			TITLE			
DATE:			XBee Wi-Fi Dev Kit			
DATE:			XBee			
DATE:			Socketed Through-hole Variant			
DATE:			PART NO.			REV.
DATE:			55001789-02			A
© Digi International Inc. All rights reserved.						DO NOT SCALE DRAWING
						SHEET 5 of 6



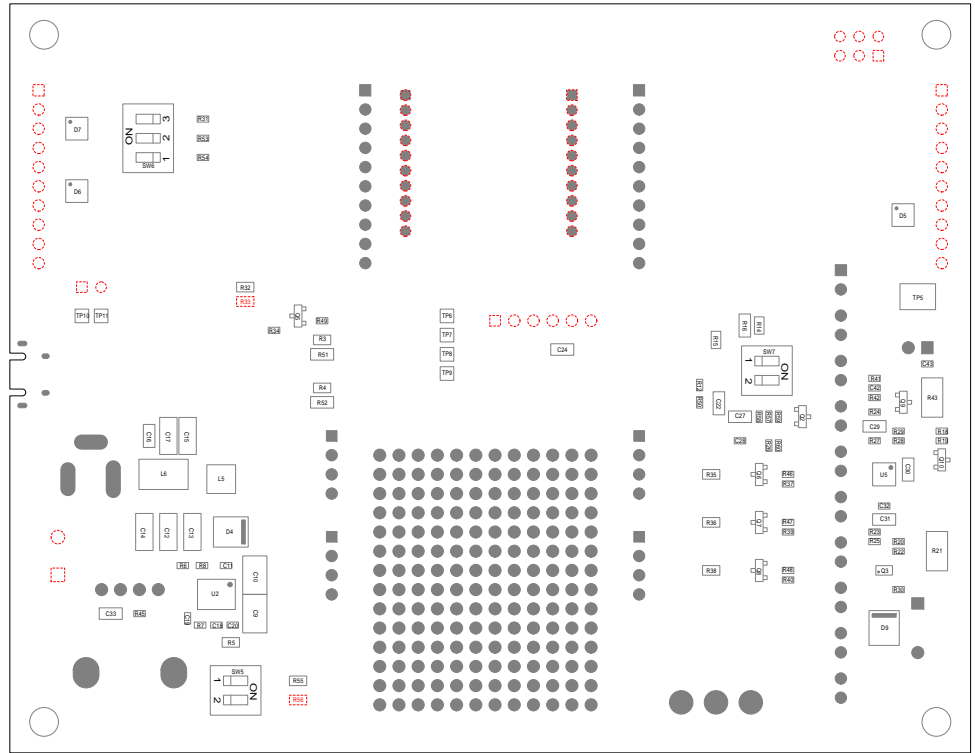
REV	ECO	DESCRIPTION OF CHANGE	BY	CKD	APPR	DATE	
APPROVALS:		DATE:	TITLE				
DESIGNED:		xx/xx/xx	XBee Wi-Fi Dev Kit				
DRAWN:		xx/xx/xx	Buttons/Switches/LEDs				
CHECKED:		xx/xx/xx	Socketed Through-hole Variant				
ENGINEER:		xx/xx/xx	PART NO.		REV.		
			55001789-02		A		
© Digi International Inc. All rights reserved.						DO NOT SCALE DRAWING	SHEET 6 of 6



REV	ECO	DESCRIPTION OF CHANGE	BY	CKD	APPR	DATE

APPROVALS:	DATE:	TITLE Assembly TOP Socketed Through-hole Variant
DESIGNED:		
DRAWN:		
CHECKED:		

ENGINEER:		PART NO. 55001789-02	REV. A
-----------	--	--------------------------------	------------------



REV	ECO	DESCRIPTION OF CHANGE	BY	CKD	APPR	DATE

APPROVALS:	DATE:	TITLE Assembly BOTTOM Socketed Through-hole Variant	
DESIGNED:			
DRAWN:			
CHECKED:			
ENGINEER:		PART NO.	REV.
		55001789-02	A

©digi International Inc.
All rights reserved