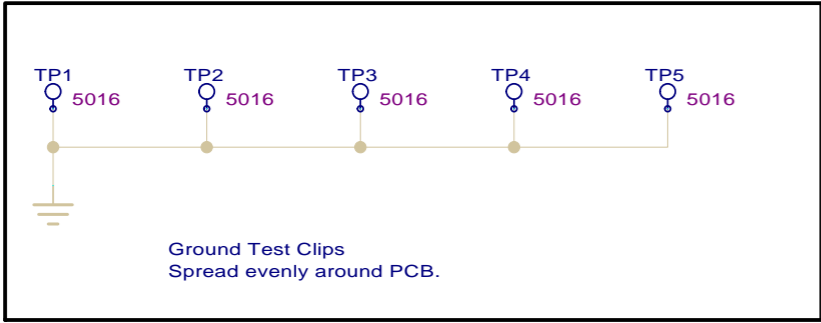
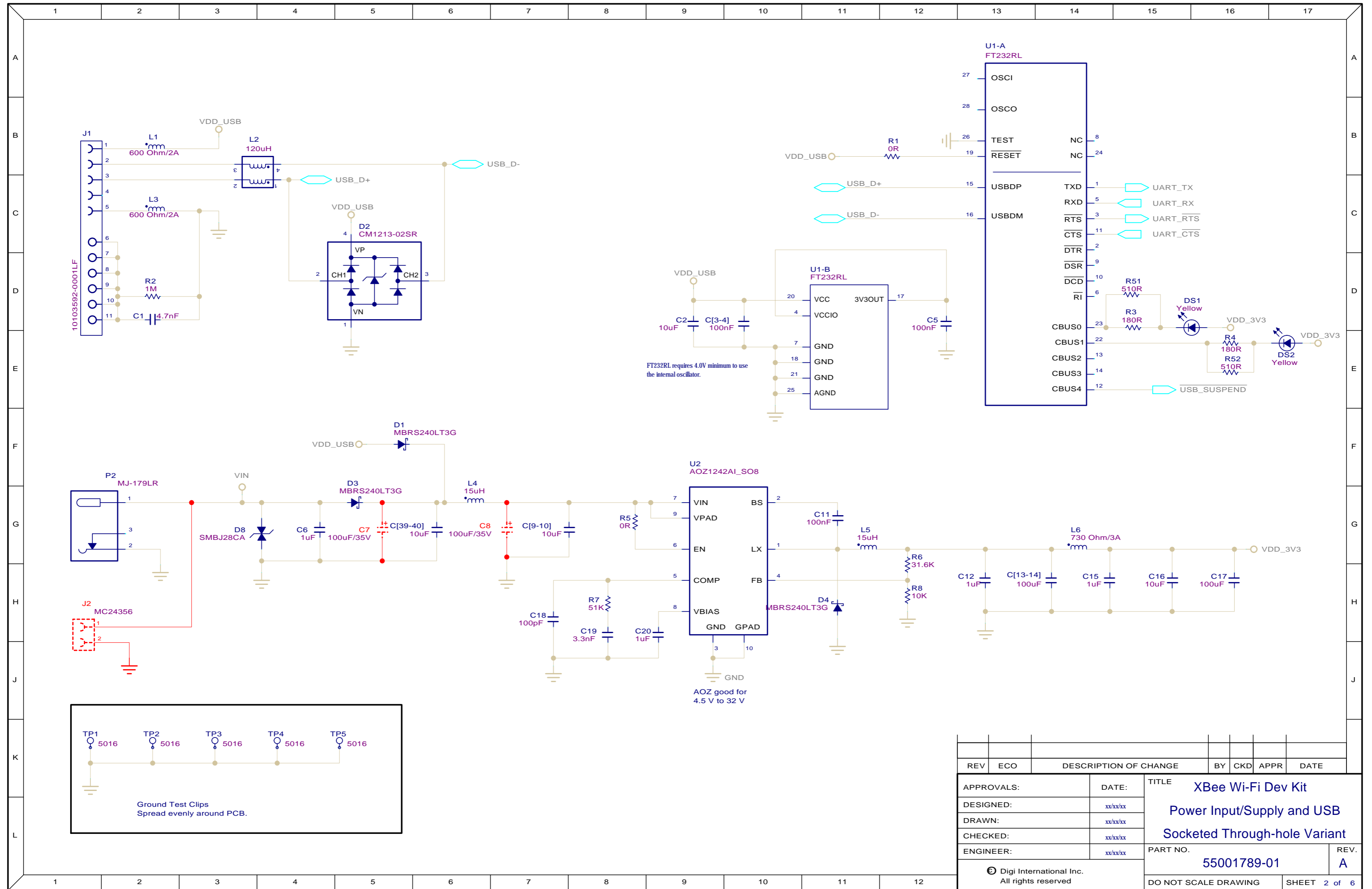


	1	2	3	4	5	6	7	8	9	10	11	12	13	14	15	16	17	
A																		A
B																		B
C																		C
D																		D
E																		E
F																		F
G																		G
H																		H
J																		J
K																		K
L																		L
	1	2	3	4	5	6	7	8	9	10	11	12						

REV	ECO	DESCRIPTION OF CHANGE	BY	CKD	APPR	DATE
APPROVALS:		DATE:	TITLE			
DESIGNED:		xx/xx/xx	XBee Wi-Fi Dev Kit			
DRAWN:		xx/xx/xx	Block Diagram			
CHECKED:		xx/xx/xx	Socketed Through-hole Variant			
ENGINEER:		xx/xx/xx	PART NO.			REV.
			55001789-01			A
© Digi International Inc. All rights reserved			DO NOT SCALE DRAWING		SHEET 1 of 6	



REV	ECO	DESCRIPTION OF CHANGE	BY	CKD	APPR	DATE
APPROVALS:		DATE:	TITLE			
DESIGNED:		xx/xx/xx	Xbee Wi-Fi Dev Kit			
DRAWN:		xx/xx/xx	Power Input/Supply and USB			
CHECKED:		xx/xx/xx	Socketed Through-hole Variant			
ENGINEER:		xx/xx/xx	PART NO.		REV.	
© Digi International Inc.		55001789-01		A		
All rights reserved		DO NOT SCALE DRAWING		SHEET 2 of 6		

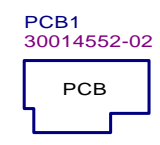
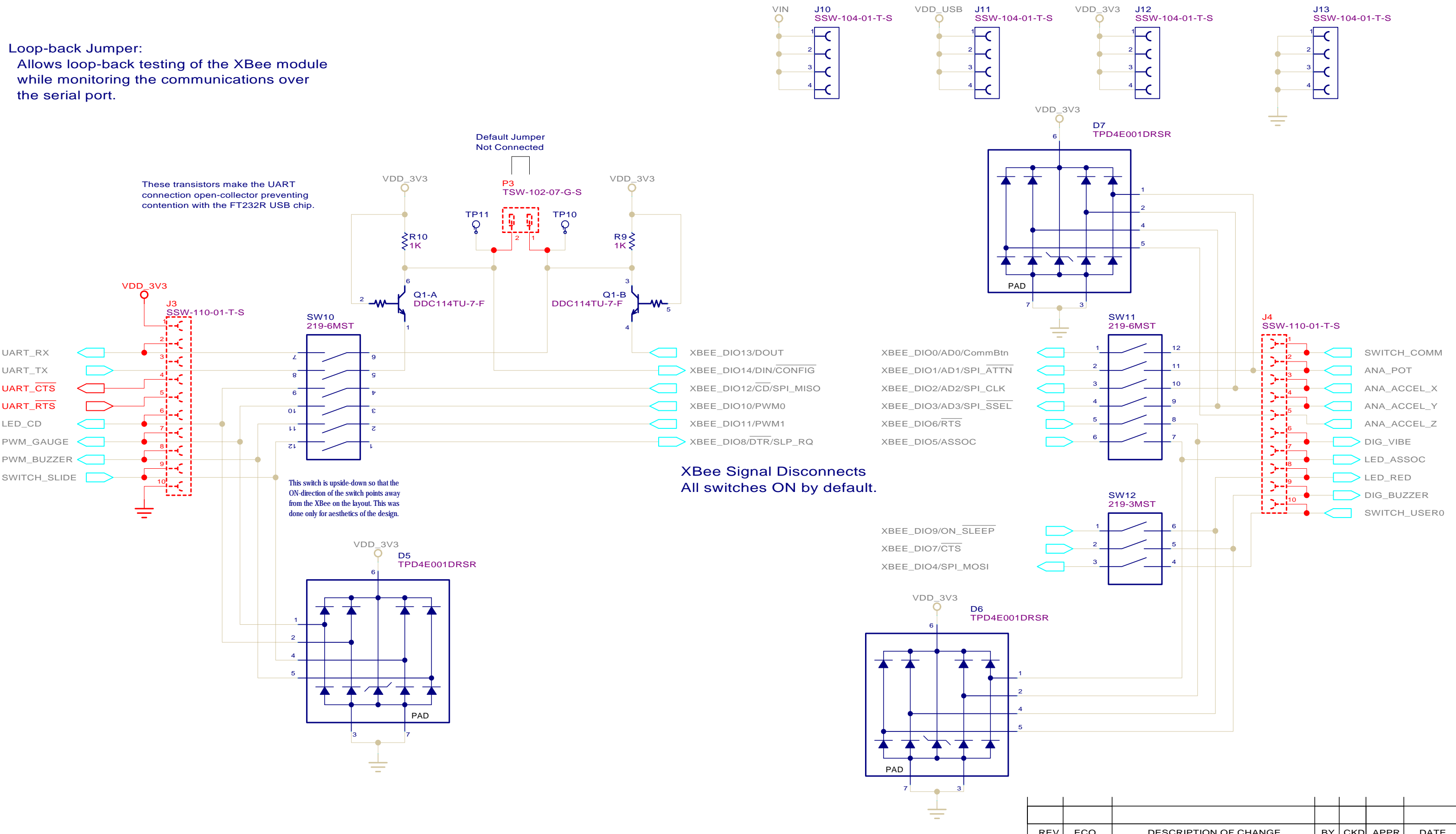
Loop-back Jumper:
Allows loop-back testing of the XBee module while monitoring the communications over the serial port.

These transistors make the UART connection open-collector preventing contention with the FT232R USB chip.

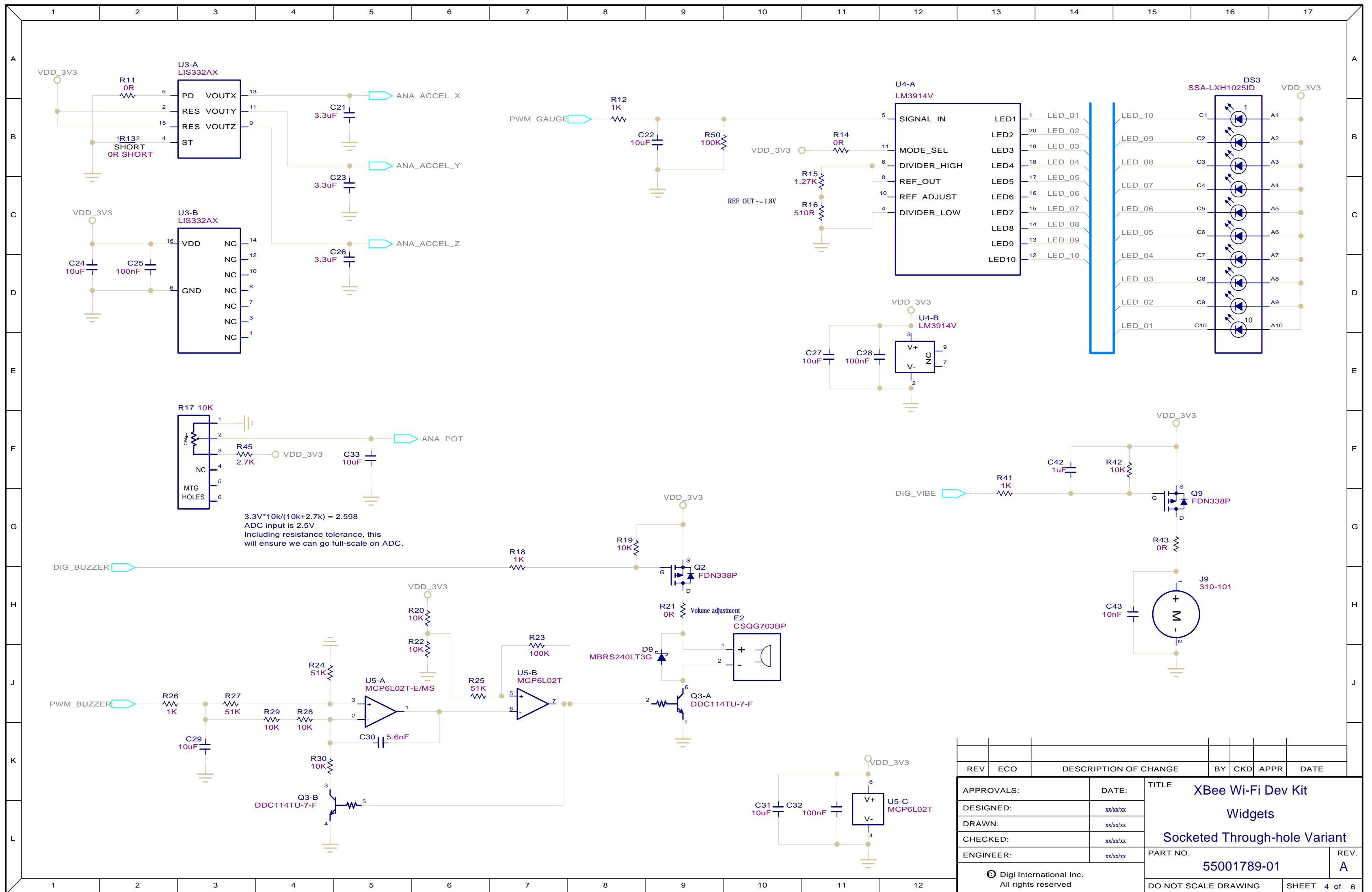
Default Jumper Not Connected

This switch is upside-down so that the ON-direction of the switch points away from the XBee on the layout. This was done only for aesthetics of the design.

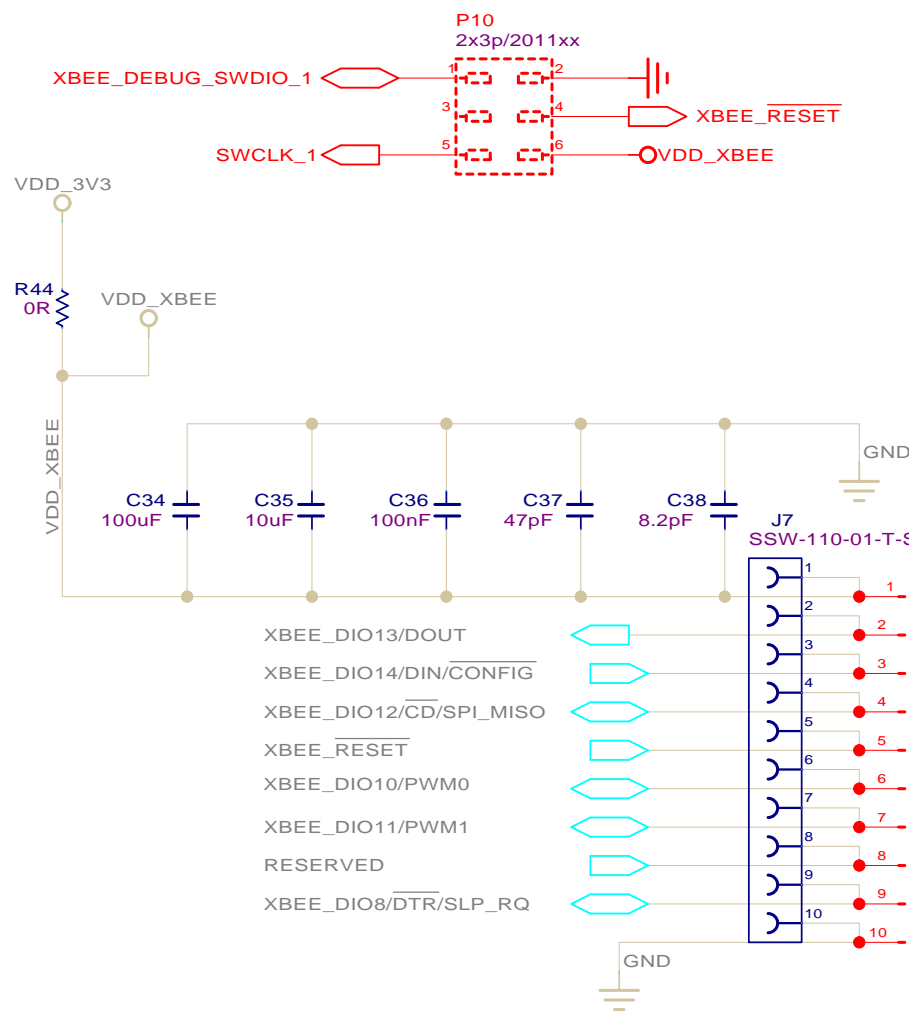
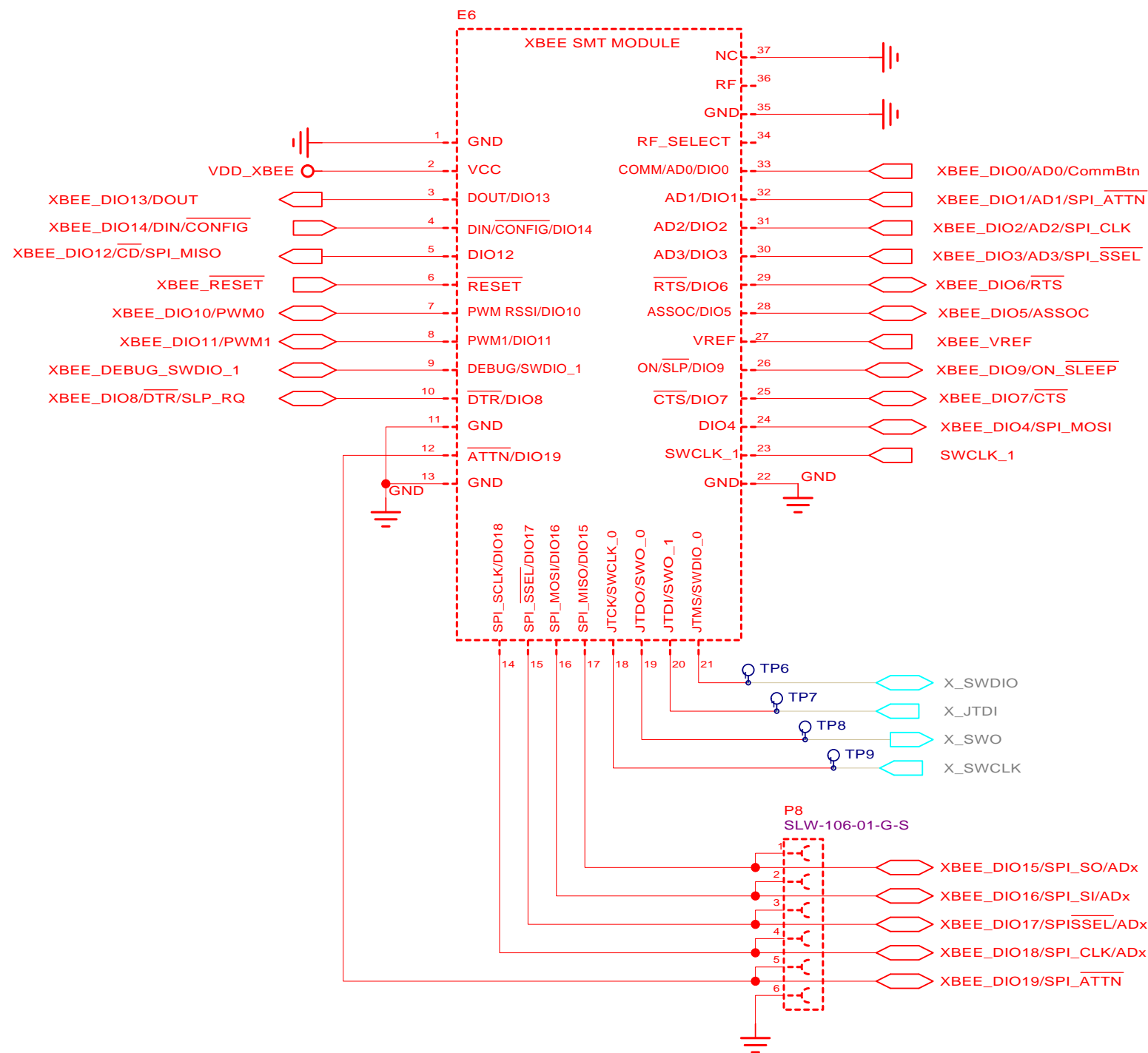
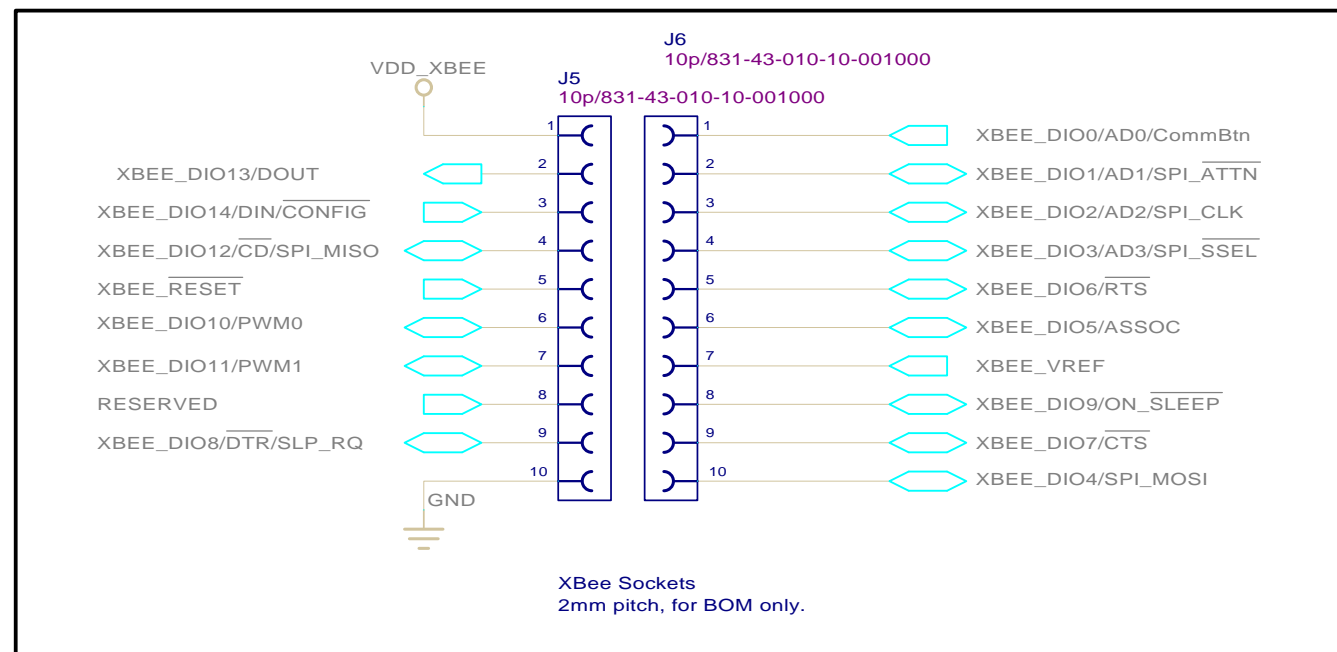
XBee Signal Disconnects
All switches ON by default.



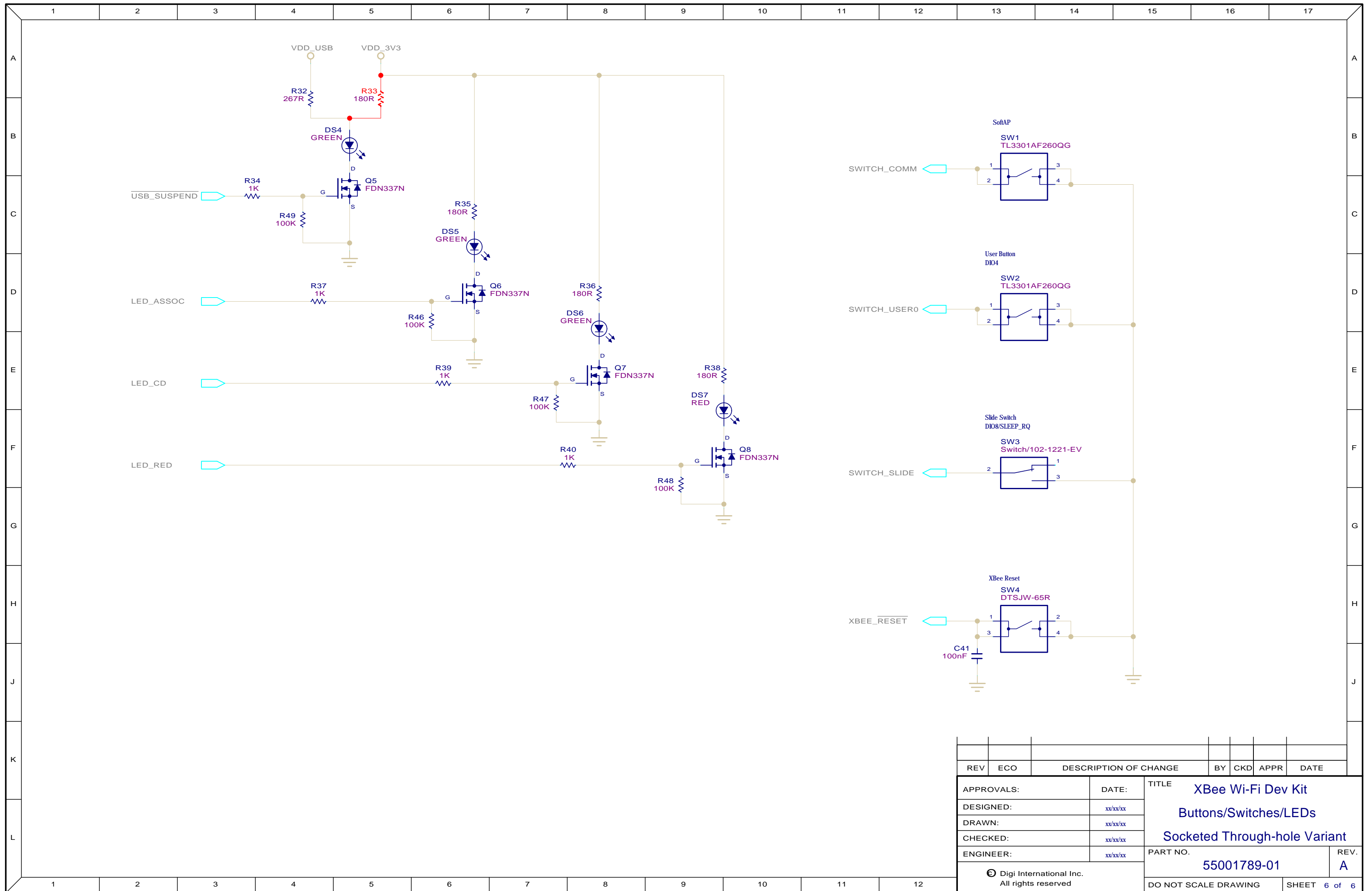
REV	ECO	DESCRIPTION OF CHANGE	BY	CKD	APPR	DATE
APPROVALS:						
DESIGNED:		DATE:	TITLE			
DRAWN:		xx/xx/xx	XBee Wi-Fi Dev Kit			
CHECKED:		xx/xx/xx	Mechanicals/Headers			
ENGINEER:		xx/xx/xx	Socketed Through-hole Variant			
© Digi International Inc. All rights reserved.			PART NO.		REV.	
			55001789-01		A	
DO NOT SCALE DRAWING					SHEET 3 of 6	



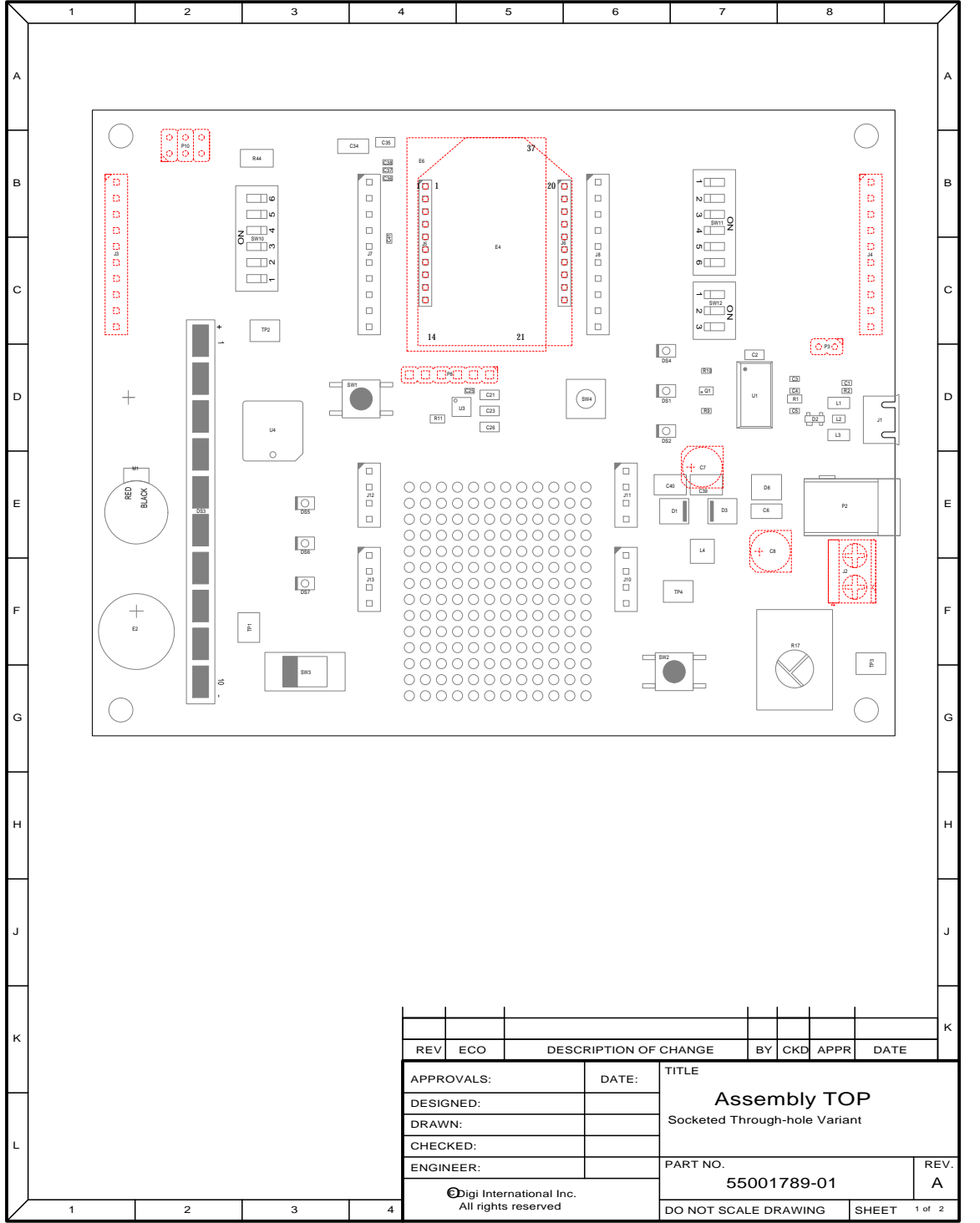
REV	ECO	DESCRIPTION OF CHANGE	BY	CKD	APPR	DATE
APPROVALS:						
DESIGNED: xx/xx/xx						
DRAWN: xx/xx/xx						
CHECKED: xx/xx/xx						
ENGINEER: xx/xx/xx						
© Digi International Inc. All rights reserved.						TITLE XBee Wi-Fi Dev Kit Widgets Socketed Through-hole Variant PART NO. 55001789-01 DO NOT SCALE DRAWING
						REV. A SHEET 4 of 6



REV	ECO	DESCRIPTION OF CHANGE	BY	CKD	APPR	DATE	
APPROVALS:		DATE:	TITLE				
DESIGNED:		xx/xx/xx	XBee Wi-Fi Dev Kit				
DRAWN:		xx/xx/xx	XBee				
CHECKED:		xx/xx/xx	Socketed Through-hole Variant				
ENGINEER:		xx/xx/xx	PART NO.		REV.		
			55001789-01		A		
© Digi International Inc. All rights reserved.						DO NOT SCALE DRAWING	SHEET 5 of 6

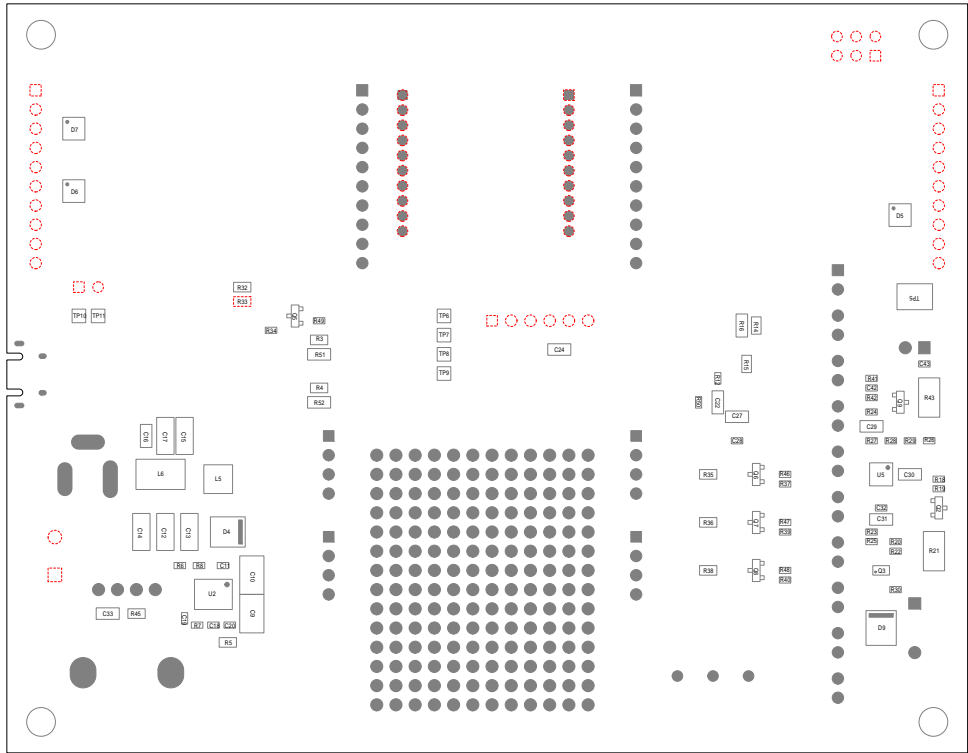


REV	ECO	DESCRIPTION OF CHANGE	BY	CKD	APPR	DATE	
APPROVALS:		DATE:	TITLE: XBee Wi-Fi Dev Kit				
DESIGNED:		xx/xx/xx	Buttons/Switches/LEDs				
DRAWN:		xx/xx/xx	Socketed Through-hole Variant				
CHECKED:		xx/xx/xx	PART NO.		REV.		
ENGINEER:		xx/xx/xx	55001789-01		A		
© Digi International Inc. All rights reserved.						DO NOT SCALE DRAWING	SHEET 6 of 6



REV	ECO	DESCRIPTION OF CHANGE	BY	CKD	APPR	DATE

APPROVALS:	DATE:	Assembly TOP Socketed Through-hole Variant	
DESIGNED:			
DRAWN:			
CHECKED:			
ENGINEER:		PART NO.	REV.
 Digi International Inc. All rights reserved		55001789-01	A



REV	ECO	DESCRIPTION OF CHANGE	BY	CKD	APPR	DATE

APPROVALS:	DATE:	TITLE Assembly BOTTOM Socketed Through-hole Variant	
DESIGNED:			
DRAWN:			
CHECKED:			

ENGINEER:	PART NO.	REV.
	55001789-01	A