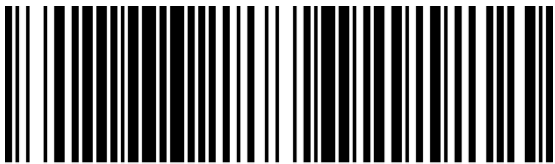




# Quick Start Guide

Digi Passport®



90000768-88 H

## Welcome to your Digi product

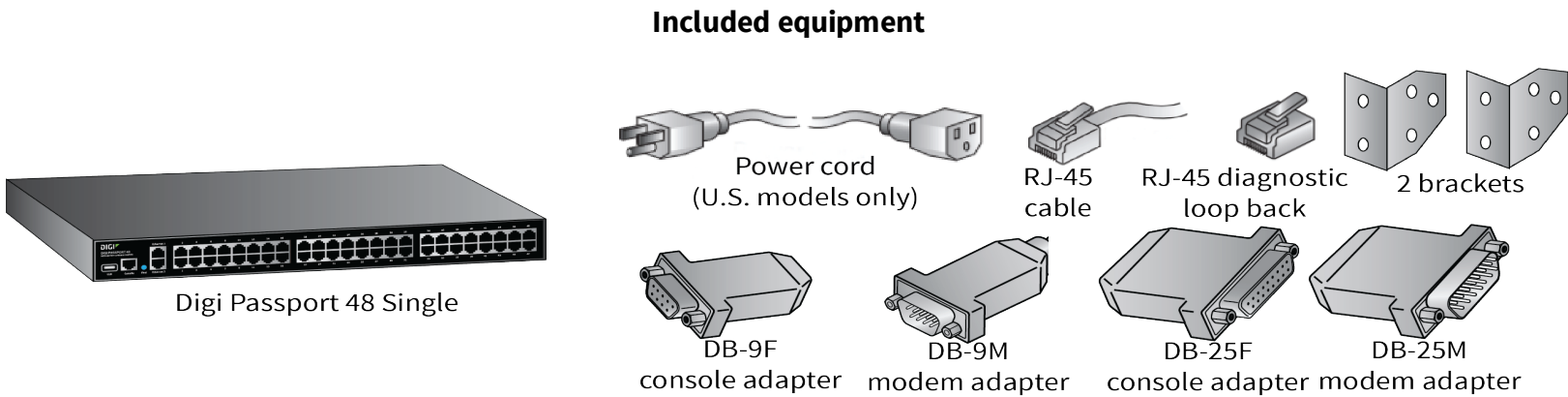
**Get started:** This guide helps you with initial product setup. Need more? Find additional supporting material for this product at [www.digi.com/products/console servers/digipassport](http://www.digi.com/products/console servers/digipassport). Or connect to the online documentation by scanning this code:



**Digi Technical Support:** Digi offers multiple support plans to help you get the most out of your product. For information on Technical Support plans and pricing, contact us at 877.912.3444 or visit [www.digi.com/support](http://www.digi.com/support).

**Documentation feedback:** To provide feedback on this documentation, send your comments to [techcomm@digi.com](mailto:techcomm@digi.com).

## 1 Verify your components

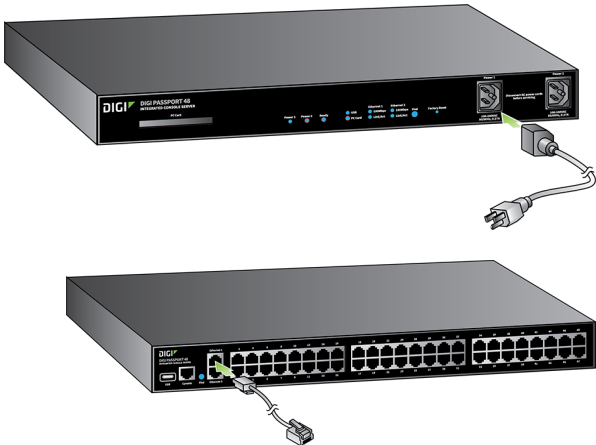


Verify that you have all included equipment. If any item is missing or damaged, contact your supplier.

**Note** A loose label sticker that includes the unique device password is included in the box. Retain this label sticker with your hardware records. This default password will be needed if the device is factory reset and you want to access the web UI on the device.

## 2 Connect the hardware

1. Connect the power cord(s).
2. Connect the Ethernet cable.



## 3 Assign network settings

Use the DPA utility or Digi Device Discovery Utility to configure your device:

1. Download the appropriate tool for your operating system.
  - a. Go to [www.digi.com/products/console servers/digipassport](http://www.digi.com/products/console servers/digipassport).
  - b. Click the **Utilities** tab under **Product Support**.
  - c. Select your operating system from the drop-down menu, then download the DPA utility (for UNIX/Linux) or Device Discovery Utility (for Windows).
2. Use the utility to perform initial device configuration, as needed. Alternatively, use the straight-through serial cable with the appropriate adapter to the Passport console port, https, or SSHv2.

**Note** The Passport has SNMP, SSHv1 and Telnet to the command line disabled by default and http is automatically redirected to https.

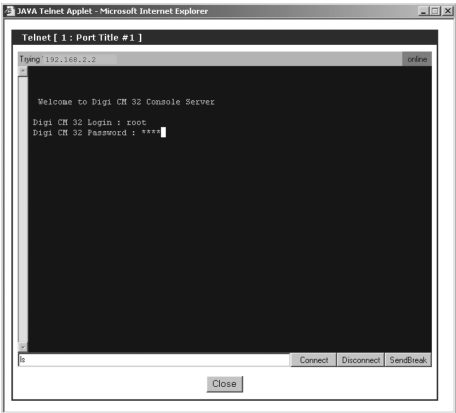
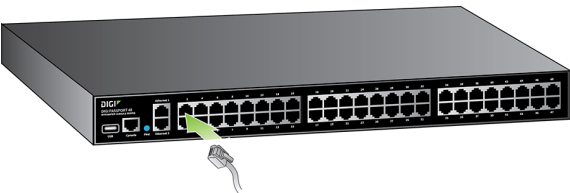
If you are a power user, you can use the configuration menu.

1. Establish a serial connection through the console port (9600, 8, N, 1).
2. Log in using the default user name and password. The default user name is **root**. The default password is printed on the device label. If a password is not on the label, the default password is **dbps**. If neither default password works, the password may have been updated. Check with your system administrator.

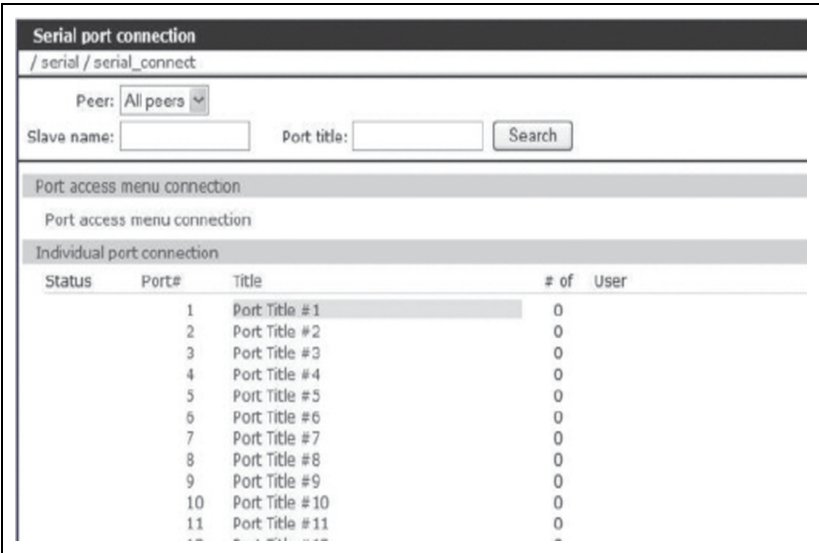
3. Type the command **configmenu**. Select Option 1 - **Network Configuration** and follow the prompts.
4. Enter the IP address in the URL address bar of your browser and go to step 4, **Test configuration**. (The default address is 192.168.161.5.)

4 Test configuration

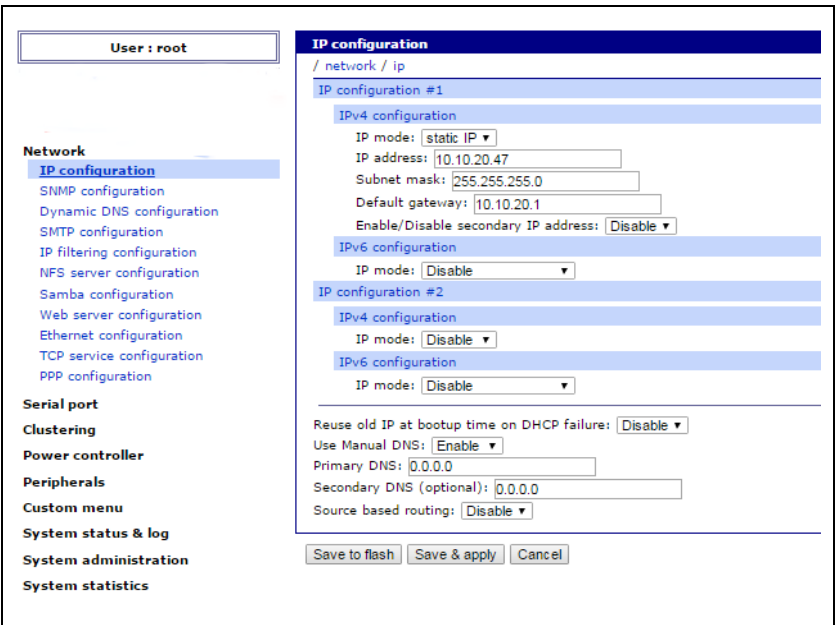
1. Insert the RJ-45 diagnostic loop into Port 1.
2. In the log in dialog, enter the default user ID and password. The default user ID is **root**. The default password is printed on the device label. If a password is not on the label, the default password is **dbps**. If neither default password works, the password may have been updated. Check with your system administrator.
3. Log in to port 1. The default user name is **root**. The default password is printed on the device label. If a password is not on the label, the default password is **dbps**. If neither default password works, the password may have been updated. Check with your system administrator.  
Verify your connection to the port by typing some text. If the text appears correctly on the screen, the configuration is correct.
4. Click **Close** to exit the port.



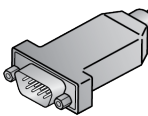
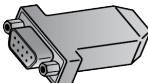
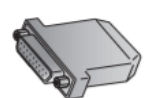
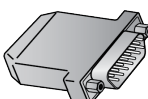
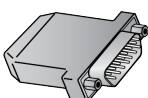
5. On the left navigation bar, click **Serial Port > Connection > Port Title #**. Installation is complete.



6. Configure the device for your application using your browser. To get back to your Digi Passport after your initial configuration, enter the IP address in the URL address bar and log in. Use the navigation bar on the left to alter your configuration.



Below is a list of available adapters and their part numbers.

Connection	Adapters (in quantities of 8)	Order #	Application
	DB-9M Modem adapter	76000702	DCE devices such as modems with DB9 female ports
	DB-9F Console adapter	76000671	Bay Accelar, Nortel and other DB-9 DTE
	DB-25F Console adapter	76000673	DTE devices with DB-25 male ports
	DB-25M Modem adapter	76000670	DCE devices such as modems
	DB-25M Console adapter	76000672	Oracle SPARC and other DTE devices with DB-25 female ports