

# Quick Start Guide

## TransPort® WR31

### Welcome to your Digi product

**Get started:** This guide helps you with initial product setup. Need more? Find additional product support at [www.digi.com/support/TransPortWR31](http://www.digi.com/support/TransPortWR31). Or connect to the online documentation by scanning this code:



**Migrating from a WR31 device?** [Click here](#) for information and tools to set up your new IX-series router.

**Digi Technical Support:** Digi offers multiple support plans to help you get the most out of your product. For information on Technical Support plans and pricing, contact us at 877.912.3444 or visit [www.digi.com/support](http://www.digi.com/support).

**Documentation Feedback:** To provide feedback on this documentation, send your comments to [techcomm@digi.com](mailto:techcomm@digi.com).

## 1 Verify your components

Some models include some additional equipment. For details about the accessories that ship with your product and for a list of available accessories that can be purchased separately, go to [www.digi.com/support/TransPortWR31](http://www.digi.com/support/TransPortWR31). Click on the **Part Numbers and Accessories** link and then find your specific part number.

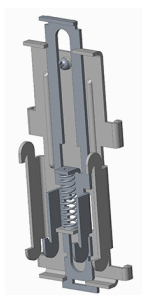
Contact a preferred carrier or the distributor for your device to inquire about cellular service options.

Verify that you have all included equipment. If any item is missing or damaged, contact your supplier.

### Included equipment



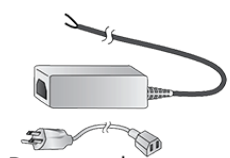
TransPort WR31



DIN rail clip

**Note** A loose label sticker that includes the unique device password is included in the box. Retain this label sticker with your hardware records. This default password will be needed if the device is factory reset and you want to access the web UI on the device or register the device with Digi Remote Manager. If the device was already registered with Remote Manager at the time of the factory reset, you do not need the unique password to access the device in Remote Manager.

### Required additional equipment



Power supply  
Digi part number 76000736,  
available on [www.digi.com](http://www.digi.com),  
or DIN rail power supply



Cellular antenna(s): Type SMA  
Available on [www.digi.com](http://www.digi.com):  
3G/4G LTE antenna: 76000926  
450 Mhz antenna: 76000960



Personal computer



SIM card(s) - Mini-SIM (2FF) size



Ethernet cable



Phillips-head screwdriver



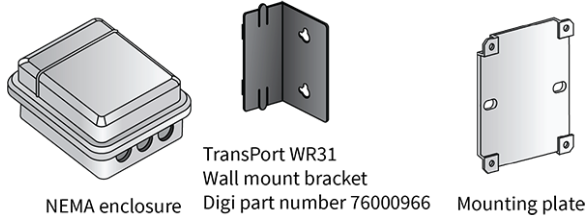
Flathead screwdriver



GPS antenna: Type SMA  
(For GPS-enabled models  
only)

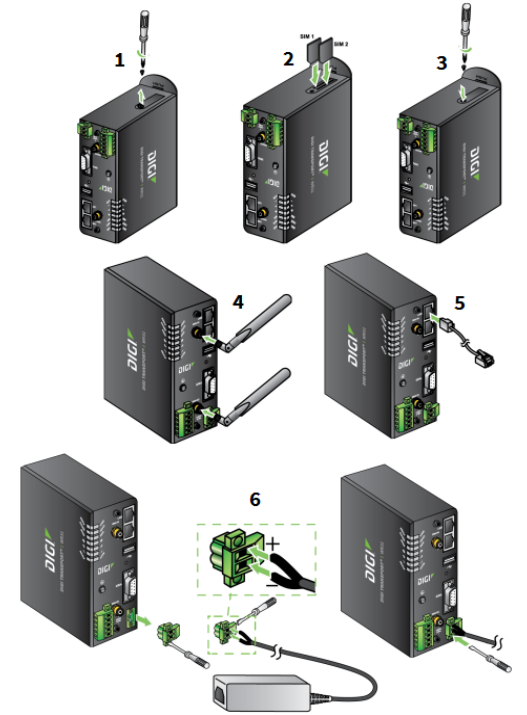
## Optional equipment

The TransPort WR31 can be mounted directly to a wall using the WR31 Wall Mount Bracket (76000966). Advanced environmental protection requires a customer specified NEMA enclosure.



## 2 Connect the hardware

1. Using a Phillips-head screwdriver, remove the SIM slot cover from the underside of the unit.
2. Insert the SIM card(s) into the SIM sockets. **SIM 1** is near the middle of the unit, and **SIM 2** is near the outside of the unit. Insert the chamfered end of the SIM card first.
3. Replace the SIM slot cover.
4. Connect the cellular antenna to the **WWAN PRI** connector on the unit. If the unit is equipped with a secondary cellular antenna connector, connect it to the **WWAN SEC** connector. If the unit is equipped with a GPS antenna connector, connect it to the **GPS** connector.
5. Connect one end of the Ethernet cable to the **LAN 0** port on the unit and the other end to a LAN port on a PC.
6. Connect the power supply. If using the optional power supply:
  - a. Remove the pluggable connector from the unit, loosening the screws for the locking flanges as needed.
  - b. Connect the wires of the power supply to the terminals, following the instructions on the power supply.
  - c. Secure the terminal screws.
  - d. Reconnect the pluggable connector to the unit.
  - e. Secure the screws on the locking flanges.
  - f. Connect the AC power to a power source.



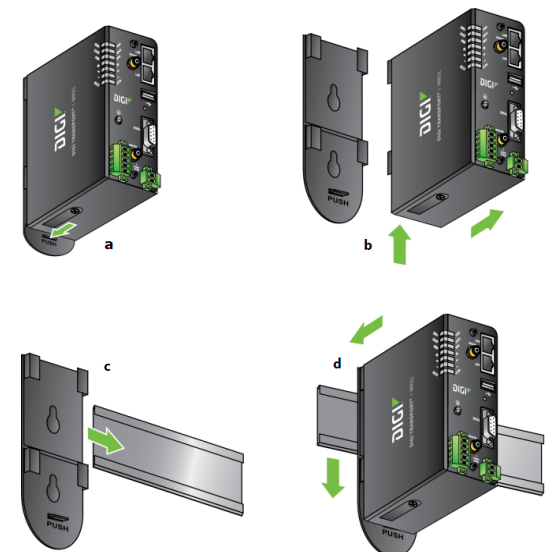
For additional hardware installation options and instructions, see the *TransPort User Guide* online, at [www.digi.com](http://www.digi.com).

7. Mount the TransPort WR31 on a DIN rail, directly onto the wall, or in a NEMA enclosure.

**Note** Position the Digi TransPort WR31 via DIN rail mounting brackets, wall-mount, or rackmount, in a location with adequate ventilation. The unit is designed for indoor use. **Do not expose the unit to extreme heat or cold, strong magnetic fields, or liquids.**

### For DIN rail mounting:

- a. Apply pressure to the DIN clip release tab.
- b. Slide the TransPort WR31 up; it should release from the clip and fall forward.
- c. Slide or snap the DIN clip onto the DIN rail.
- d. Align the TransPort WR31 with the guides on the DIN clip; reverse Step b and slide the device into the DIN clip guides and down until it clicks into place.



### For wall-mounting or NEMA enclosure mounting:

Purchase the TransPort WR31 Wall Mount Bracket (Digi part number 76000966) and NEMA enclosure equipment.

8. When the unit is powered up, the **POWER** LED illuminates and the unit starts a series of diagnostic self-tests. During this process, one or more of the other LEDs will flash to show that the unit is busy. See **Section 4, View the TransPort LEDs and startup states**, for more information on LEDs. When the flashing stops, the unit has completed the self-test diagnostics and is ready to be configured.

## 3 Get started with the Digi mobile app

Take advantage of the Digi Remote Manager subscription bundled with your WR31 purchase.

Use the **Digi Remote Manager** mobile app to quickly set up your WR31.

Here's how:

1. Download the **Digi Remote Manager** mobile app from the [App Store](#) (iPhone) or [Google Play](#) (Android).
2. Click **Log in or Sign Up** and then click **Sign up** to create a new account.
3. You'll receive an email with login instructions.
4. From the **Digi Remote Manager** mobile app, click **Log in** and log into your new account.
5. From the menu, select **Install a device with a QR or bar code** and scan the installation QR code on the label.
6. Follow the prompts to complete your WR31 registration.

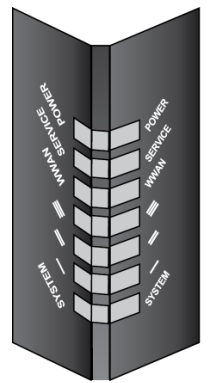
## 4 Run the Getting Started Wizard

If your PC is configured to automatically get an IP address, it can get an IP address from the device. Otherwise, make sure your PC can connect to the network **192.168.1.0 (255.255.255.0)**.

1. Enter **192.168.1.1** into the address bar of the web browser. The first page of the Getting Started Wizard appears.
  2. Enter login credentials:
    - User name: **admin**
    - Password: The default password is printed on the device label.
- 
- If a device that was manufactured prior to release 8.0.0.3 has been upgraded to the current release:
    - If the device was upgraded using the Web UI **Update Firmware**, the router retains the existing default user accounts. For example, after upgrading from release 7.1.2.2 to the current release, the default user account name remains **username**, and the default password is **password**.
      - After upgrading using the Web UI **Update Firmware**, if you then factory reset the device, the user name will be **admin**, and the default password will be **default**.
    - If the device was upgraded using Flashwriter, the user name is **admin**, and the default password is **default**.
  - If a device that was manufactured with release 8.x is downgraded to a release prior to 8.0.0.3:
    - If the device was downgraded using the Web UI **Update Firmware**, the user name is **admin**, and the default password is **default**.
    - If the device was downgraded using Flashwriter, the **admin** account is longer be present. Instead, the default account user name is **username**, and the default password is **password**.
      - After downgrading with Flashwriter, if you then upgrade to 8.0.0.3 or greater using the Web UI **Update Firmware**, the router will retain the **username/password** account and not include an **admin** account. If you then factory default the router, the **admin** account with the preprogrammed unique password will return.
      - After downgrading with Flashwriter, if you then upgrade to 8.0.0.3 or greater using Flashwriter, the **admin** account with the preprogrammed unique password will again be present and the **username/password** account will be removed.
- 
3. To run the wizard, click **Get Started** or click **Skip Wizard** to manually configure the device.
  4. The Getting Started Wizard prompts you to enter your Digi Remote Manager username and password. If you do not already have a Digi Remote Manager account, go to <https://remotemanager.digi.com> to sign up for a free trial.

## 5 View the TransPort LEDs and startup states

- **POWER LED:**
  - Off: No power
  - Green: TransPort device is powered
- **SERVICE LED:**
  - Off: No WWAN network connection
  - Green: WWAN network connection
  - Flashing: WWAN traffic being transmitted or received
- **WWAN LED:** Indicates the presence and level of cellular service running on the device.
  - Off: No cellular service
  - 1 blink: GPRS mode
  - 2 blinks: EDGE mode
  - 3 blinks: UMTS mode
  - 4 blinks: HSDPA mode
  - 5 blinks: HSUPA mode
  - 6 blinks: LTE mode
- **SIGNAL LEDs:** Indicate strength of cellular signal.
  - 3 LEDs: Excellent
  - 2 LEDs: Good
  - 1 LED: Fair
  - 0 LEDs: Poor or no signal
- **SYSTEM LED:** Reserved for user-defined functions.



After the Getting Started Wizard completes, the TransPort web interface appears. For additional configuration, use the web interface and refer to the *Digi TransPort User Guide* and Application Notes available at [www.digi.com/support/TransPortWR31](http://www.digi.com/support/TransPortWR31).

## 6 Update device and modem firmwares

Digi strongly recommends updating the router's device and modem firmware before first use. This ensures that the router has the latest device security and cellular network patches applied. To download the latest firmware, go to <https://www.digi.com/support> > [Firmware Updates](#), select the model and follow the steps outlined in [TransPort Firmware Update Instructions](#).