
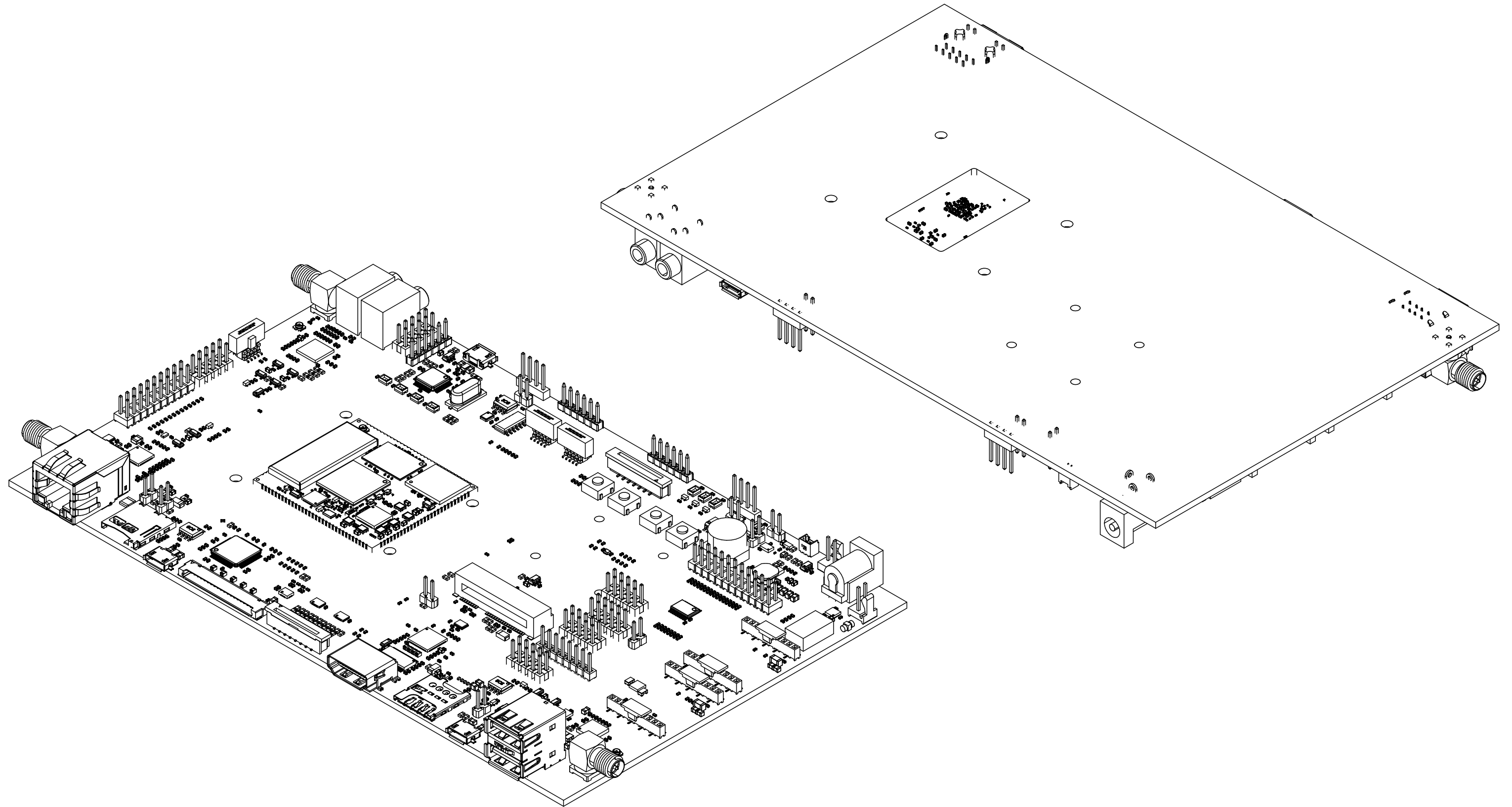



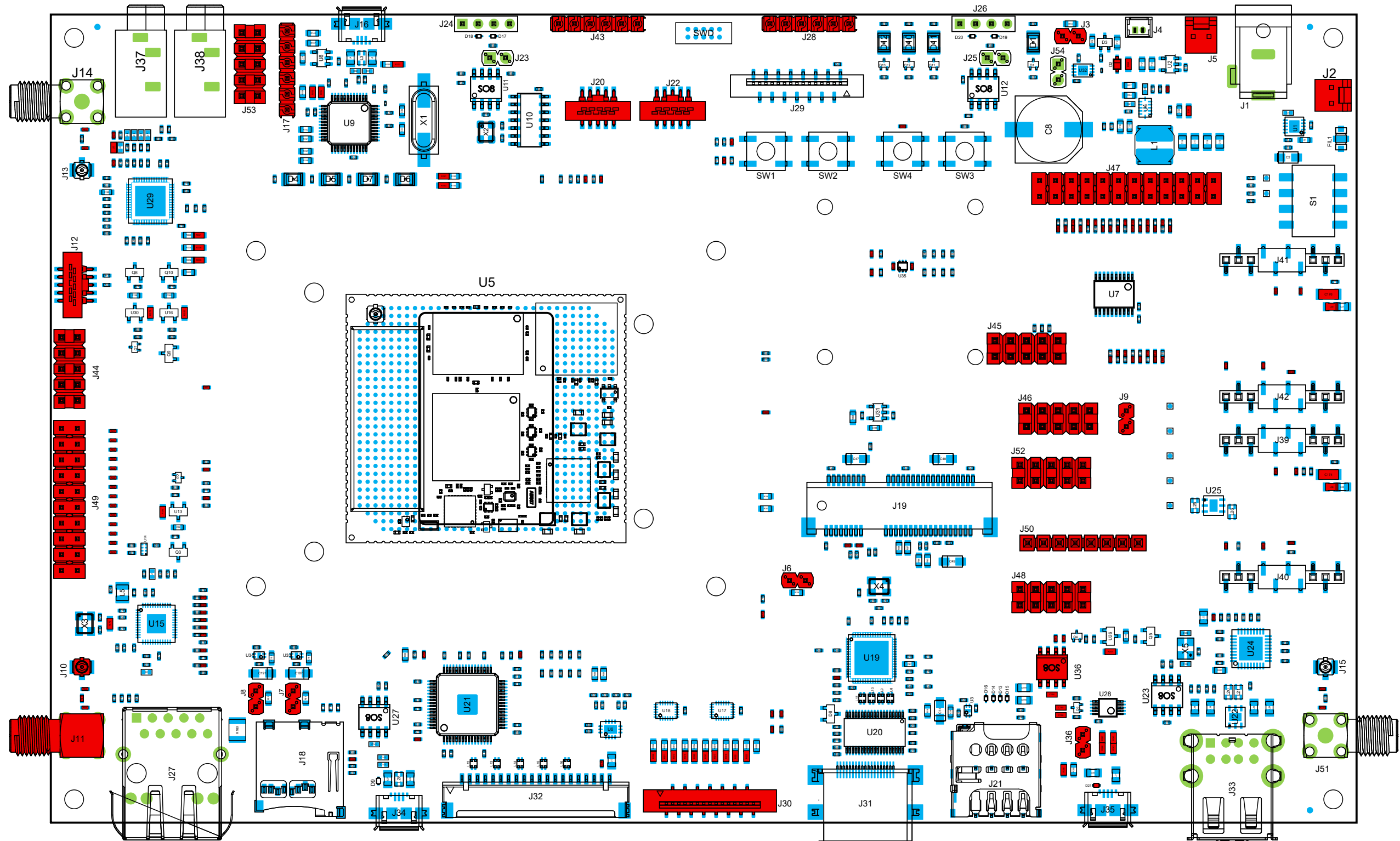
1. REFER TO DIGI FAI DOCUMENT 96000657 (LATEST REVISION) FOR ACCEPTANCE REQUIREMENTS
2. WORKMANSHIP TO BE EQUAL TO AND COMPLIANT WITH THE REQUIREMENTS OF IPC-A-610 (LATEST REVISION) CLASS 2 OR HIGHER
3. ASSEMBLE USING LEAD-FREE PROCESSES
  - A. FINISHED ASSEMBLY TO CONFORM TO LATEST REVISION OF EU DIRECTIVES FOR RoHS and REACH AT TIME OF MANUFACTURE
  - B. SOLDER PASTE - SAC305
  - C. SOLDER CHEMISTRY - NO CLEAN
4. DEVICE ORIENTATION IS IDENTIFIED WITH A DOT
  - A. DOT IDENTIFIES PIN #1 UNLESS OTHERWISE NOTED
5. ORIENTATION OF POLARIZED CAPACITORS IS DENOTED BY A BAR
6. ORIENTATION OF POLARIZED DIODES IS DENOTED BY A BAR
7. COMPONENTS WITHOUT POLARITY -
8. REFER TO BOM FOR COMPONENT POPULATION

DO NOT SCALE DRAWING		THIS DOCUMENT CONTAINS PROPRIETARY INFORMATION TO BE USED ONLY FOR THE PURPOSE FOR WHICH IT WAS MADE AVAILABLE					
<b>UNLESS OTHERWISE SPECIFIED</b> <b>DIMENSIONS</b> Millimeters <b>GEOMETRIC TOLERANCING</b> ASME Y14.5M - 1994 <b>TOLERANCES</b> Fractions    Decimals    Angles ±1/64        .X ±.1            ±1° .XX ±.05 .XXX ±.01	<b>PART NO</b> 55002060-02 Rev 2P	<b>PCB PART NO</b> 30016232-03 Rev A		 <b>DIGI INTERNATIONAL</b> 9350 Excelsior Blvd Suite 700 HOPKINS, MN 55343			
	<b>PROJECT</b> ConnectCore i.MX8 8M Mini Development board						
	<b>HW ENGINEER</b> S. MEYER	<b>LAYOUT ENGINEER</b> -	<b>OFFICE</b> -	<b>DRAWING SHEET</b> <table border="1"> <tr> <td><b>SIZE</b> B</td> <td><b>DESCRIPTION</b> Assembly Notes</td> <td><b>NUMBER</b> 1 OF 5</td> </tr> </table>	<b>SIZE</b> B	<b>DESCRIPTION</b> Assembly Notes	<b>NUMBER</b> 1 OF 5
<b>SIZE</b> B	<b>DESCRIPTION</b> Assembly Notes	<b>NUMBER</b> 1 OF 5					
<b>CHANGE HISTORY AND APPROVALS RESIDE IN THE ARENA PLM SYSTEM</b>							



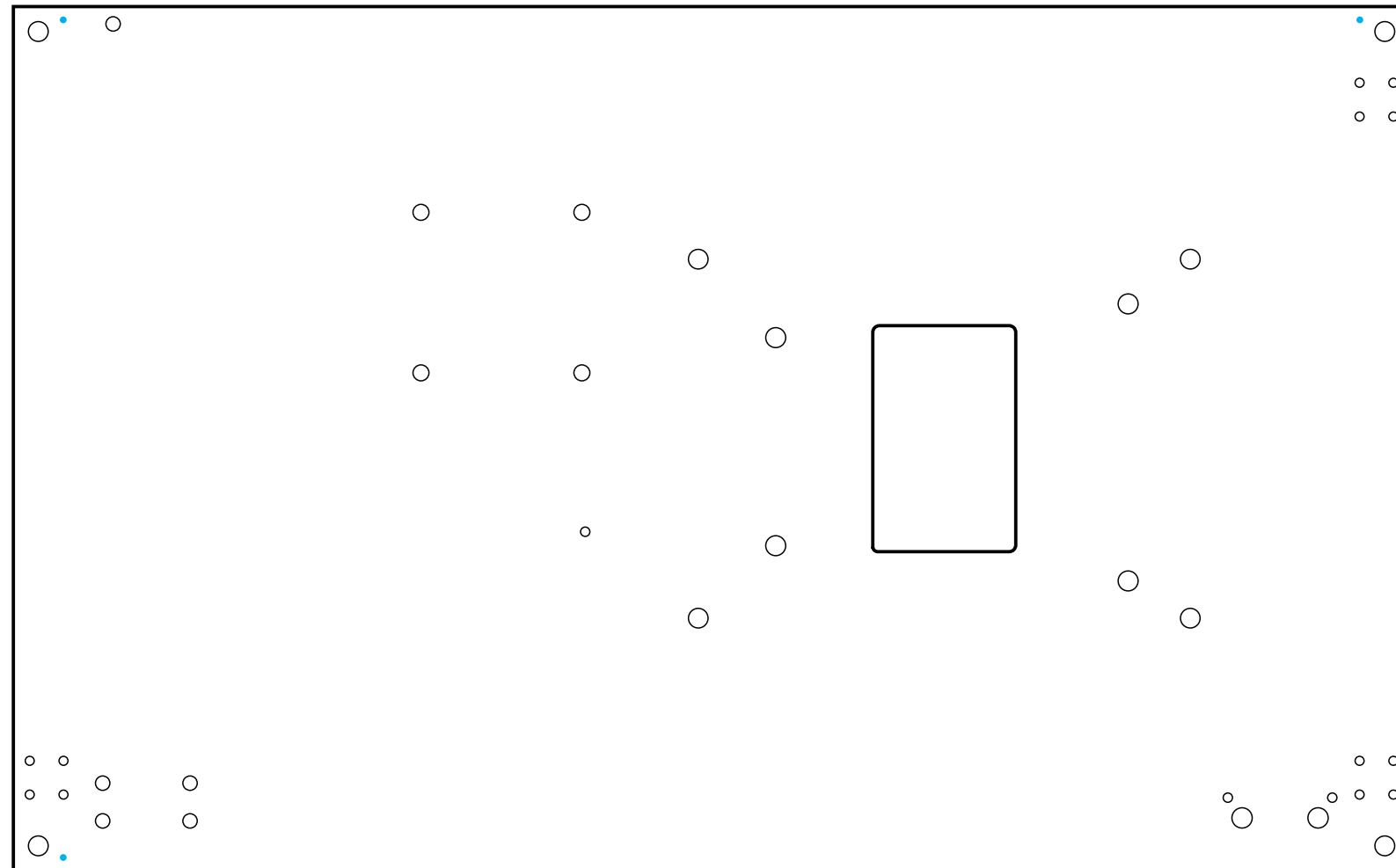
DO NOT SCALE DRAWING THIS DOCUMENT CONTAINS PROPRIETARY INFORMATION TO BE USED ONLY FOR THE PURPOSE FOR WHICH IT WAS MADE AVAILABLE

<b>UNLESS OTHERWISE SPECIFIED</b> <b>DIMENSIONS</b> Millimeters <b>GEOMETRIC TOLERANCING</b> ASME Y14.5M - 1994 <b>TOLERANCES</b> Fractions    Decimals    Angles $\pm 1/64$ $.X \pm 1$ $\pm 1^\circ$ $.XX \pm 05$ $.XXX \pm 01$	<b>PART NO</b> 55002060-02 Rev 2P	<b>PCB PART NO</b> 30016232-03 Rev A	 <b>DIGI INTERNATIONAL</b> 9350 Excelsior Blvd Suite 700 HOPKINS, MN 55343	
	<b>PROJECT</b> ConnectCore i.MX8 8M Mini Development board			
	<b>HW ENGINEER</b> S. MEYER	<b>LAYOUT ENGINEER</b> -	<b>OFFICE</b> -	<b>DRAWING SHEET</b>
	<b>CHANGE HISTORY AND APPROVALS RESIDE IN THE ARENA PLM SYSTEM</b>			<b>SIZE</b> B <b>DESCRIPTION</b> Isometric Views <b>NUMBER</b> 2 OF 5




DO NOT SCALE DRAWING		THIS DOCUMENT CONTAINS PROPRIETARY INFORMATION TO BE USED ONLY FOR THE PURPOSE FOR WHICH IT WAS MADE AVAILABLE	
UNLESS OTHERWISE SPECIFIED	PART NO 55002060-02 Rev 2P		PCB PART NO 30016232-03 Rev A
	PROJECT ConnectCore i.MX8 8M Mini Development board		
DIMENSIONS Millimeters	HW ENGINEER S. MEYER	LAYOUT ENGINEER -	OFFICE -
GEOMETRIC TOLERANCING ASME Y14.5M - 1994	DRAWING SHEET		
TOLERANCES Fractions    Decimals    Angles ±1/64        .X ±.1            ±1° .XX ±.05 .XXX ±.01	CHANGE HISTORY AND APPROVALS RESIDE IN THE ARENA PLM SYSTEM		NUMBER 3 OF 5

No Components on Bottomside



DO NOT SCALE DRAWING

THIS DOCUMENT CONTAINS PROPRIETARY INFORMATION TO BE USED ONLY FOR THE PURPOSE FOR WHICH IT WAS MADE AVAILABLE

<b>UNLESS OTHERWISE SPECIFIED</b> <b>DIMENSIONS</b> Millimeters <b>GEOMETRIC TOLERANCING</b> ASME Y14.5M - 1994 <b>TOLERANCES</b> Fractions    Decimals    Angles ±1/64        .X ±.1        ±1° .XX ±.05 .XXX ±.01	<b>PART NO</b> 55002060-02 Rev 2P	<b>PCB PART NO</b> 30016232-03 Rev A	 <b>DIGI INTERNATIONAL</b> 9350 Excelsior Blvd Suite 700 HOPKINS, MN 55343				
	<b>PROJECT</b> ConnectCore i.MX8 8M Mini Development board						
	<b>HW ENGINEER</b> S. MEYER	<b>LAYOUT ENGINEER</b> -	<b>OFFICE</b> -	<b>DRAWING SHEET</b> <table border="1"> <tr> <td><b>SIZE</b> B</td> <td><b>DESCRIPTION</b> Assembly Bottomside</td> <td><b>NUMBER</b> 4 OF 5</td> </tr> </table>	<b>SIZE</b> B	<b>DESCRIPTION</b> Assembly Bottomside	<b>NUMBER</b> 4 OF 5
	<b>SIZE</b> B	<b>DESCRIPTION</b> Assembly Bottomside	<b>NUMBER</b> 4 OF 5				
<b>CHANGE HISTORY AND APPROVALS RESIDE IN THE ARENA PLM SYSTEM</b>							

