

---

---

# UNCBAS\_3

Standard Version for UNC20 and UNC90



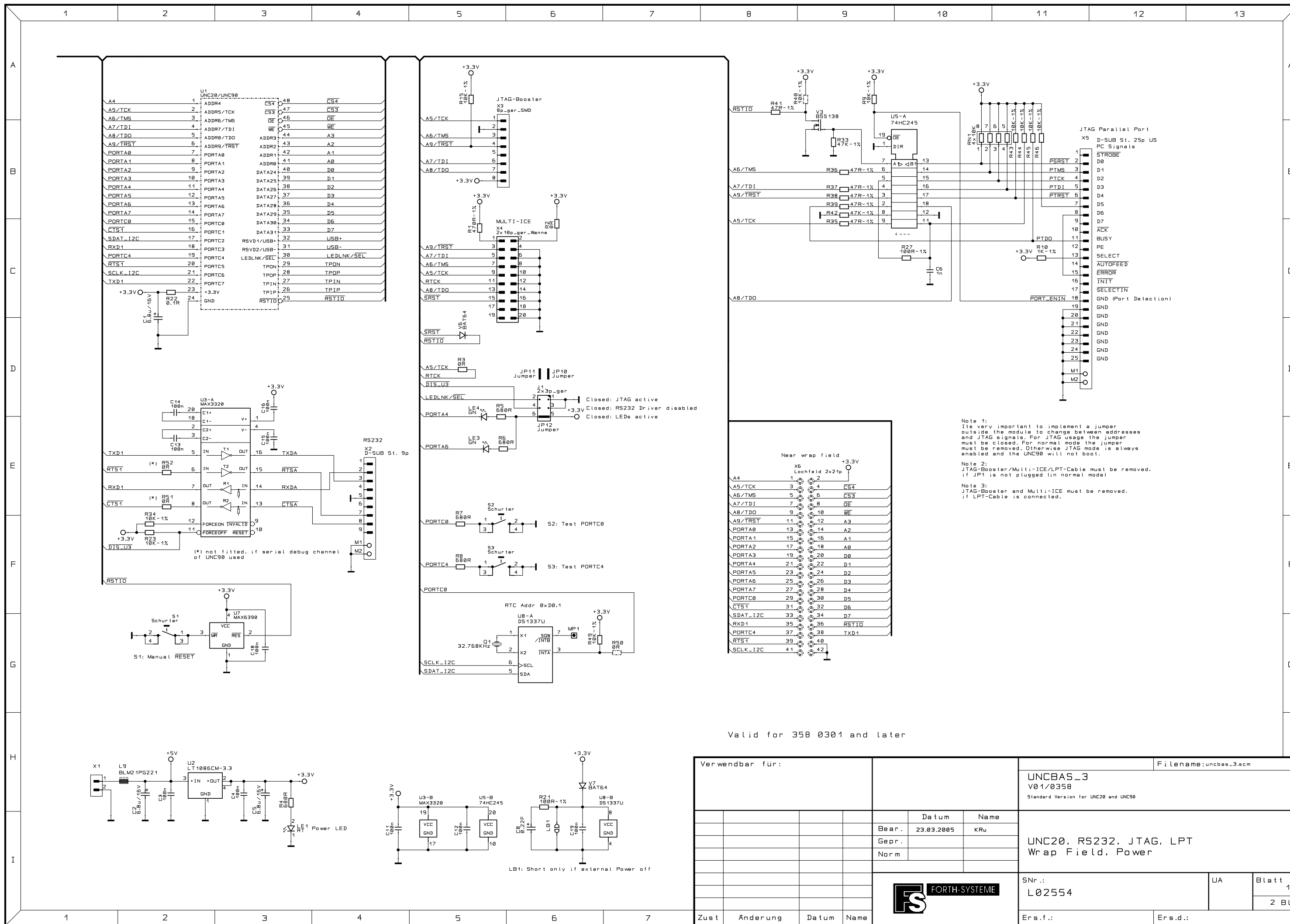
**FORTH-SYSTEME GMBH**

Postfach 1103  
Kueferstrasse 8  
Tel. ++49 7667 908-0  
<http://www.fsforth.de>

D-79200 Breisach, GERMANY  
D-79206 Breisach, GERMANY  
Fax ++49 7667 908-200  
[sales@fsforth.de](mailto:sales@fsforth.de)

---

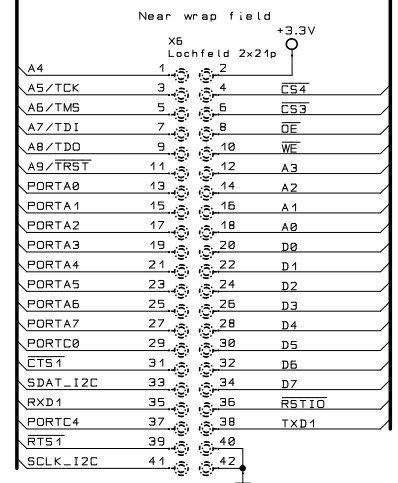
---



Note 1:  
Its very important to implement a jumper outside the module to change between addresses and JTAG signals. For JTAG usage the jumper must be closed. For normal mode the jumper must be removed. Otherwise JTAG mode is always enabled and the UNCB90 will not boot.

Note 2:  
JTAG-Booster/Multi-ICE/LPT-Cable must be removed, if JP1 is not plugged (in normal mode)

Note 3:  
JTAG-Booster and Multi-ICE must be removed, if LPT-Cable is connected.

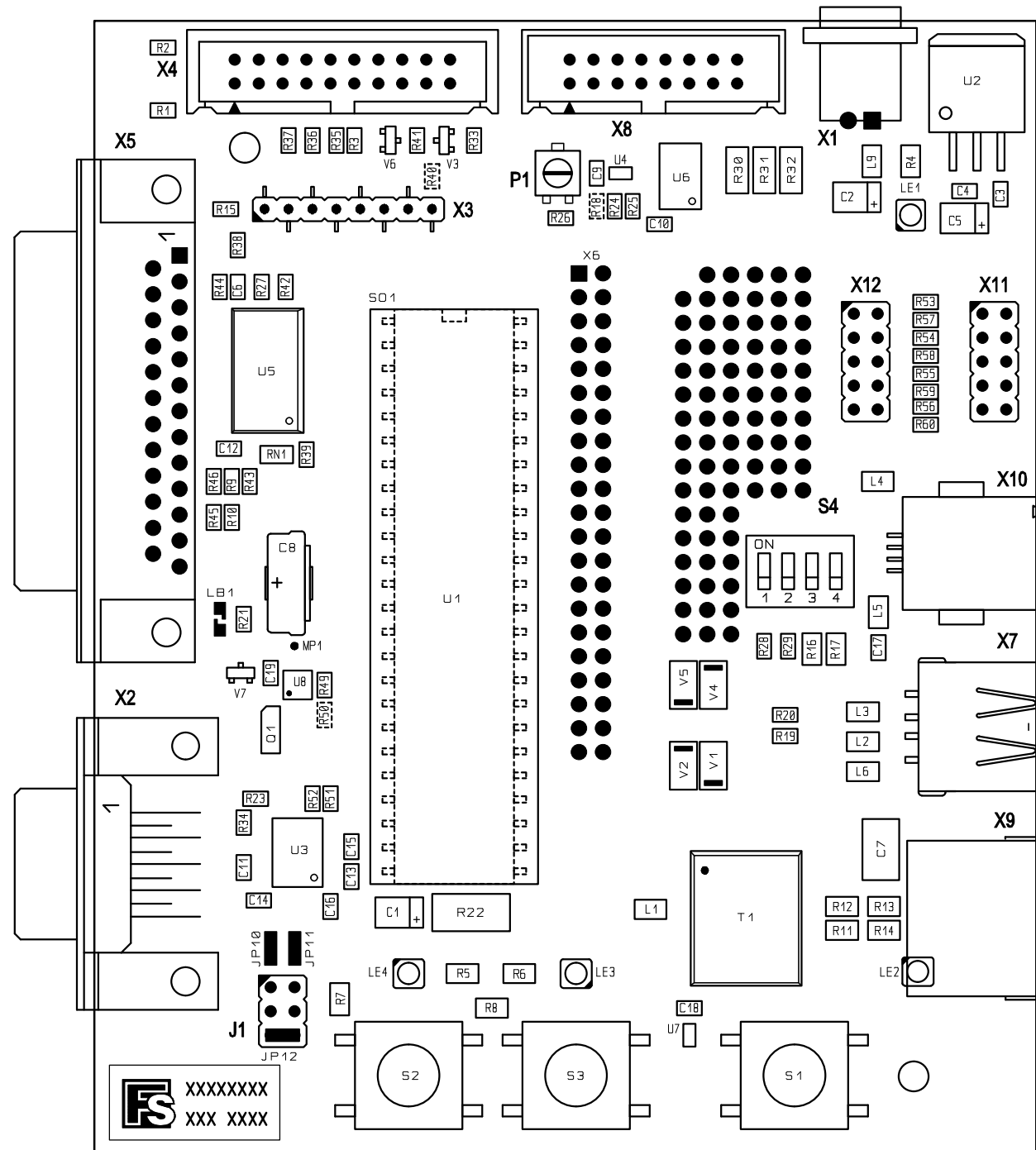


Valid for 358 0301 and later

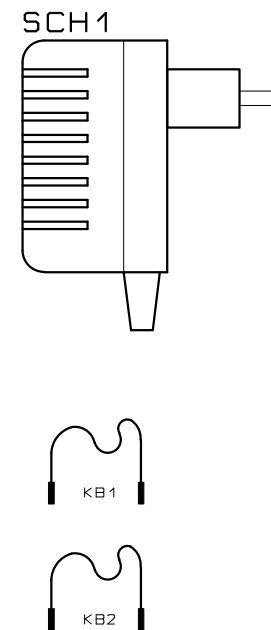
Verwendbar für:		Dateiname: uncbas_3.scm	
		UNCBAS_3 V01/0358 Standard Version for UNCB20 and UNCB90	
	Datum	Name	
	Bear.	23.03.2005 KRu	
	Gepr.		
	Norm		
		UNCB20, RS232, JTAG, LPT Wrap Field, Power	
Zust		Snr.: L02554	
Anderung		UA	
Datum		Blatt 1	
Name		2 Bl.	
		Ers.f.:	
		Ers.d.:	





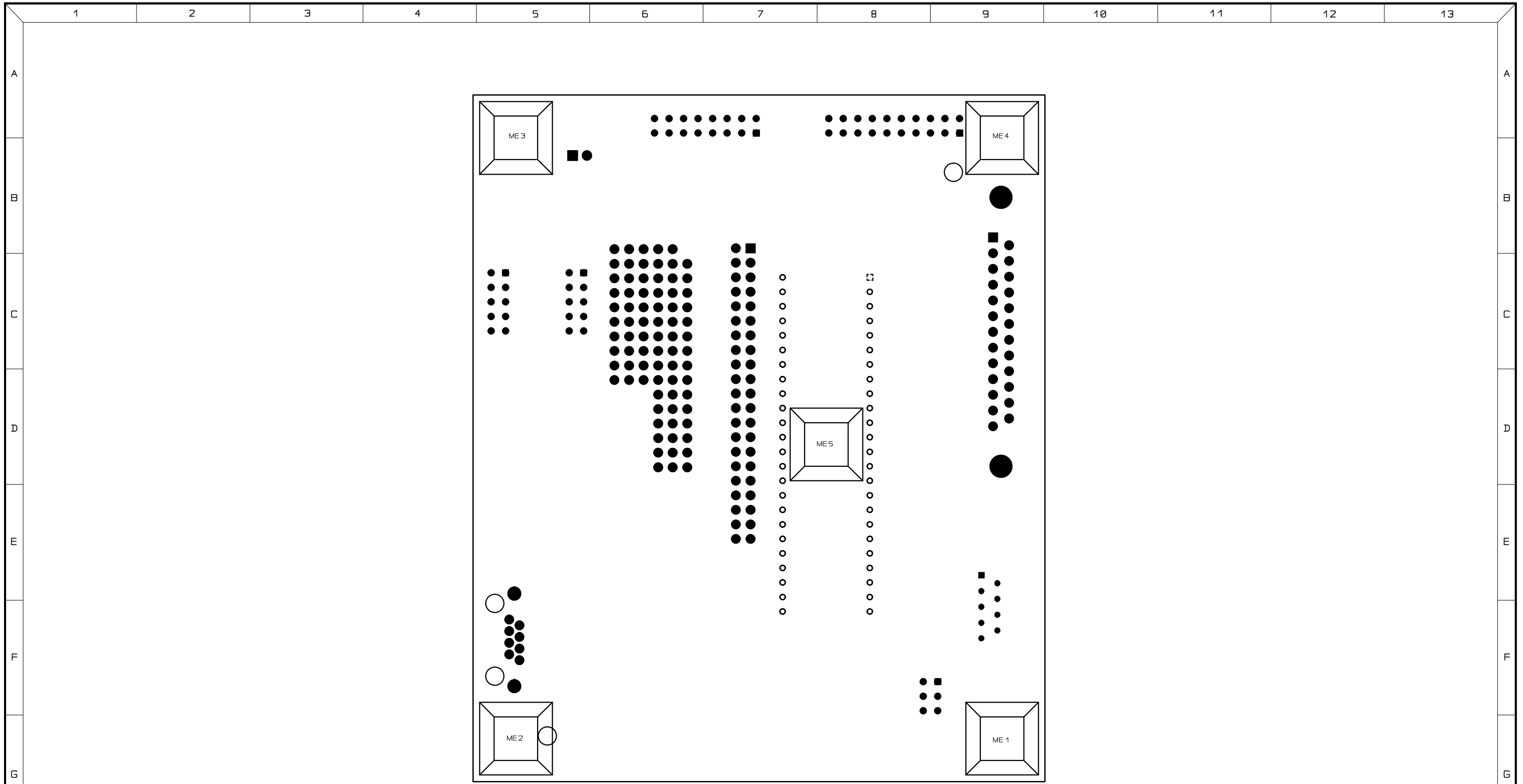


UNCBAS\_3 Placement TOP 07.04.05




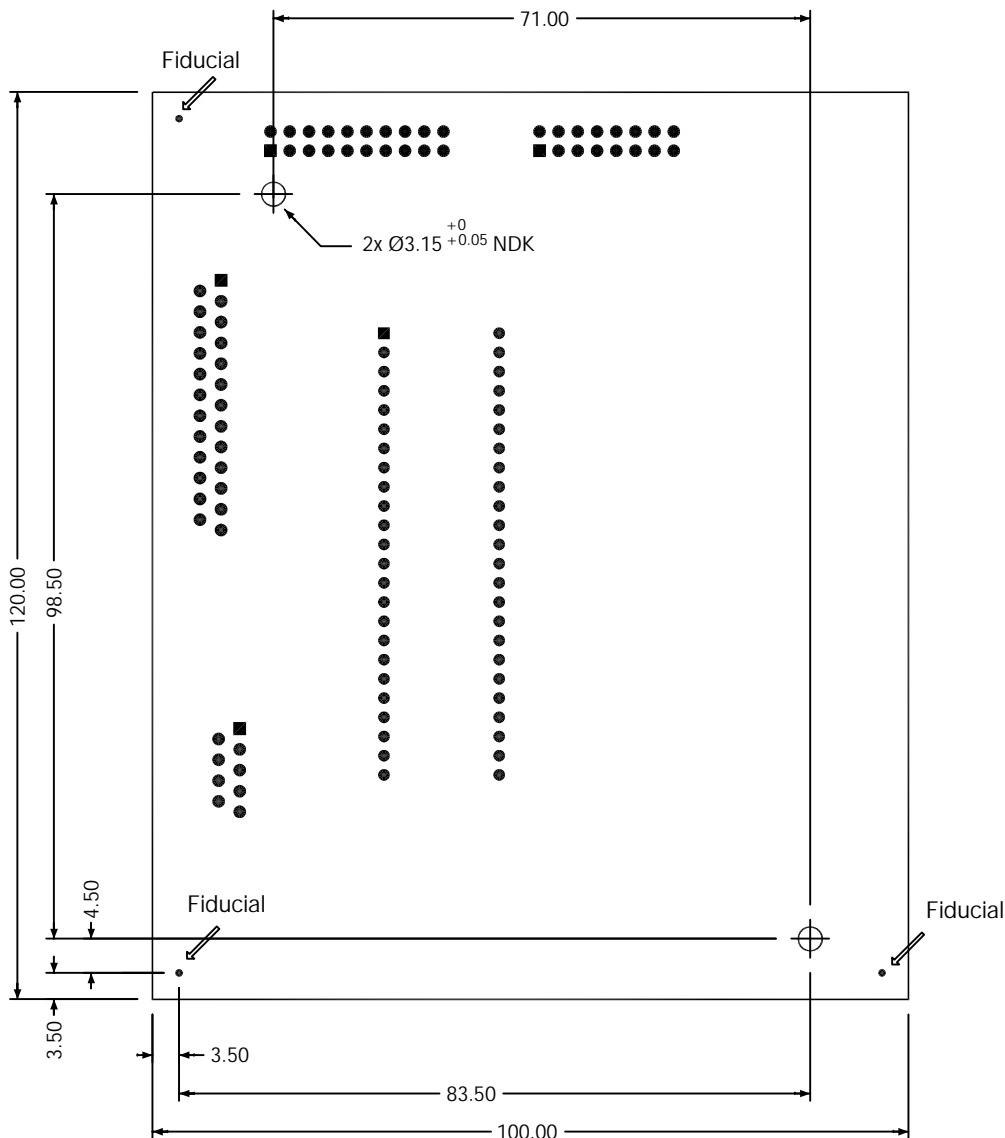
XXXXXXXX  
XXX XXXX

Verwendbar für:		Masstab 3:2		Filename: Uncbas_3.pcb	
		UNCBAS_3 V01/0358 Standard Version for UNC20 and UNC90			
		Datum	Name	Placement TOP Side	
		Bear. 07.04.05	SC		
		Gepr.			
		Norm			
				SNr.:	UA
				L02554	Blatt 1
				2 Bl.	
Zust.	Änderung	Datum	Name	Ers.f.:	Ers.d.:



UNCBAS\_3 Placement BOT 05.04.05

Verwendbar für:		Masstab 3:2		Filename: Uncbas_3.pcb	
		UNCBAS_3 V01/0358 Standard Version for UNC20 and UNC90			
		Datum	Name	Placement BOTTOM Side	
		Bear. 05.04.05	SC		
		Gepr.			
		Norm			
				SNr.:	UA
				L02554	Blatt 2
				2 Bl.	
A	Changed X4/B J1	25.08.03	JAF		
Zust.	Anderung	Datum	Name	Ers.f.:	Ers.d.:



**BEACHTEN:**

Versatz der Referenzbohrungen zu den Fiducials  $\leq 0,08\text{mm}$ .  
 Versatz der Fräskontur zu den Fiducials  $\pm 0,2\text{mm}$ .  
 DK- und NDK-Bohrungen in einem Arbeitsgang bohren!

Alle Maße in mm!

Verwendbar für:				Allgemein-Toleranzen $\pm 0,2\text{mm}$		Maßstab 1:1		Filename UNCBAS_3_LP.DWG	
				<b>UNCBAS_3</b>					
				Datum		Name		<b>Dimensions TOP</b>	
				Bear.	04.04.05	SC			
				Gepr.					
				Norm					
						SNR.		UA	Blatt 1
						<b>L02554</b>		<b>TZ</b>	1 Bl.
Zust.	Änderung	Datum	Name	Ers. für:		Ers. durch:			