



Digi Z45 Remote Management System (RMS) Industrial Controller

The complete automation control system in a box with sophisticated PLC-like automation control on the same platform that provides communications

The **Digi Z45 Remote Management System (RMS)** comes complete with antennas, a robust power supply and a rugged enclosure built to withstand harsh environments. This all-in-one solution ensures reliable performance in challenging industrial conditions.

Automation Control is a software application with an intuitive development environment. Monitoring and control applications are quickly deployed with a no-code, menu driven toolset that gets maintainable solutions to market faster and at a lower cost than legacy PLC approaches.

Digi Z45 RMS Industrial Controllers interface with a wide range of sensors to bring data seamlessly and quickly into the system for processing. Standard support includes current and voltage for analog data, wet and dry contacts, Modbus RTU and TCP, and other vendor specific protocols.

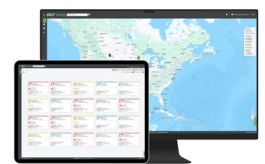
The Z45 controller securely and efficiently moves data over the network. The controllers are provisioned for use on domestic and international carriers, with cellular and Ethernet communication options available.

Whether the Z45 RMS is operating as a communications device or as an application controller, **Digi Axxess** is available to provide a detailed visualization of network, platform, and application operations.

For specialized applications requiring custom coding the Z45 RMS supports a downloadable cross compile development environment, a tested source distribution, and a fully documented tool chain.

Key features, benefits and applications

- Integrated interfaces for analog, digital, hex and pulse information processing
- Modbus client and server configurations
- Built-in digital and analog input, digital output
- Network connectivity over USB, Ethernet and serial interfaces
- On-board dashboard display: gauges, indicators and charts
- Self-provisioning devices report to **Digi Axxess** for complete visibility of asset
- Mobile management with Digi Axxess app ([iOS](#) / [Android](#))
- LTE coverage on all bands for North American carriers with 3G HSPA fallback
- Automatic carrier provisioning and dual-SIM failover support

Your Gateway to Cloud and Edge-Based Remote Monitoring and Control Solutions

Elevate your monitoring and control capabilities with Digi Axxess. Whether you prioritize edge-based control or the flexibility of cloud-based monitoring, Digi Axxess serves as your unified platform, offering an intuitive interface to streamline data management for enhanced operational efficiency.

Unlock simplified automation control at the edge, with our built in functions and logical operators to enable:

- **Dynamic scheduling:** customize tasks for peak efficiency using real-time data
- **Conditional actions:** trigger tailored responses based on complex conditions
- **Adaptive control:** optimize performance and adjust parameters based on feedback

Related Digi devices and software



Digi Z45 Industrial Controller



Digi Z1201 I/O Module



Digi Axxess



Digi Connect Sensor XRT-M

DIGI Z45 RMS INDUSTRIAL CONTROLLER

Photos and Specifications

Product Images



Specifications

Digi Z45 RMS Industrial Controller NEMA Enclosure*

NEMA ENCLOSURE FEATURES	Waterproof and UV stable, RF transparent for wireless devices, gasketed lid with dual latches, tamper-proof locking screw with key and provision for padlock
MATERIAL / COLOR	Polycarbonate + ABS
DIMENSIONS	Outer: 276 mm x 252 mm x 106 mm (10.9 x 9.2 x 4.2 in); Inner: 191 mm x 165 mm x 83 mm (7.5 in x 6.5 in x 3.3 in)
WEIGHT	0.6 kg (1.5 lb)
RATINGS / FLAME RATING	Meets NEMA 1, 2, 4, 4X, 12, 13 and IEC 529 IP65, IP66
INCLUDED POWER SUPPLY	Power supply — DIN mount; out: 15 W, 24 VDC 0.6 A; in: 100 - 240 VAC 50/60 hz
INCLUDED CABLE GLANDS	(4) M23 x 1.5
INCLUDED ANTENNAS AND MOUNT KIT	(2) Antenna mounted inside enclosure (multiband, 4G / 3G / 2G, GPS, flex/strip, SMA) / Mount kit — DIN rail
DIGI Z45 INDUSTRIAL CONTROLLER	CTK-Z4550A2M Industrial Controller; see full details at digi.com/products/models/ctk-z4550a2m .

*View complete product details and specifications at digi.com/products/networking/infrastructure-management/industrial-automation/z45-industrial-controllers.

DIGI Z45 RMS INDUSTRIAL CONTROLLER

Part Numbers

Part Numbers	Digi Z45 RMS Industrial Controller*
CTK-Z4550A2M-RMS	Digi Z45 Remote Management System (RMS) Industrial Controller with NEMA enclosure — cellular

*Contact Digi for Digi Data Plan options and pricing, or visit digi.com/support/professional-services/managed-connectivity-services.

Part Numbers	Digi Axxess**
DIGI-AXESS-1YR	Digi Axxess — 1-year subscription
DIGI-AXESS-3YR	Digi Axxess — 3-year subscription

**To learn more about Digi Axxess, visit digi.axess.com.

Part Numbers	Digi Axxess VPN
IM-VPN-V-25MB-1YR	Digi Axxess VPN — 25 MB, 1-year subscription
IM-VPN-V-50MB-1YR	Digi Axxess VPN — 50 MB, 1-year subscription
IM-VPN-V-150MB-1YR	Digi Axxess VPN — 150 MB, 1-year subscription
IM-VPN-V-500MB-1YR	Digi Axxess VPN — 500 MB, 1-year subscription
IM-VPN-V-1GB-1YR	Digi Axxess VPN — 1 GB, 1-year subscription

*

Part Numbers	Available Accessories***
CTK-Z1201	Digi Multifunction I/O Controller

***Accessories not included with Digi Z45 RMS Industrial Controller models unless otherwise noted.

For more information, please visit digi.com.



For more information about Digi Z45 RMS Industrial Controllers, visit digi.com/z45-rms.

877-912-3444 | 952-912-3444

