

A photograph of a worker in safety gear, including a yellow high-visibility jacket, dark pants with reflective stripes, a white hard hat, and safety glasses. The worker is climbing a metal tower structure, holding onto a rope. The background is a bright, overcast sky. The image is partially obscured by a dark grey diagonal overlay on the left side.

4 STEPS TO 4G LTE MIGRATION SERVICES FIELD GUIDE

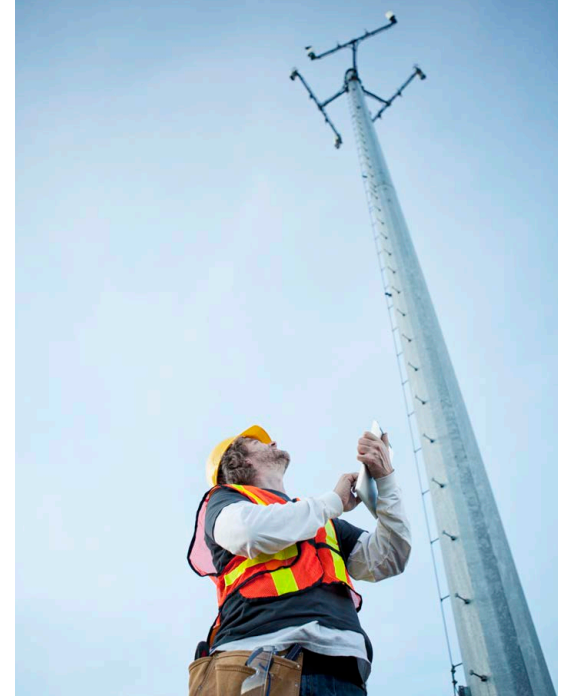
Upgrade to 4G and beyond.

Evaluate signal strength, product requirements and carrier options.

Site visits by Digi service engineers enable precise cellular surveys including RSRP (signal strength), RSRQ (signal quality) and SNIR (noise) values—by site and by carrier. Based on survey findings, Digi engineers can help you design and deploy the ideal solution—with a custom report as your 4G LTE migration roadmap.

DELIVERABLES:

- **CARRIER RECOMMENDATIONS**
- **IDEAL BANDS**
- **ANTENNA PLACEMENT**



Digi routers are the wireless backbone for industrial-strength connectivity in a wide range of demanding environments.

Determine the product mix best suited for your needs.

Based on Digi Site Survey recommendations, your Digi engineer can provide guidance in right-sizing router and gateway performance to your specific needs. You can leverage our expertise in migration or development of new Python applications, device management platforms and third-party device integration.

DELIVERABLES:

- **RECOMMENDED DEVICES AND ANTENNA DESIGN**
- **RECOMMENDED DEVICE AND NETWORK CONFIGURATION**
- **RECOMMENDED DEVICE MANAGEMENT PLATFORM**

Digi routers are rugged and ready for pre-certified drop-in deployment, no matter the application.





Digi Remote Manager includes simple configuration, and troubleshooting tools. It will remotely update and monitor overall device performance – and save you multiple truck rolls.

Examine configuration, security and maintenance strategies.

Digi engineers bring first-hand experience in third-party device integration, Python migration and IoT application development. Digi Remote Manager® gives you secure control to configure and monitor multi-location connectivity from the convenience of your desktop, tablet, or smartphone.

DELIVERABLES:

- **DEVICE CONFIGURATION**
- **NETWORK FIREWALL CONFIGURATION**
- **PYTHON SCRIPT MIGRATION AND MOBILE OR WEB IOT APP DEVELOPMENT**
- **THIRD-PARTY DEVICE INTEGRATION AND ASSISTANCE**



Digi Migration Services will help you evaluate, select, configure and install your new cellular LTE products—one step at a time, or as a bundled solution.

Implementation training, installation and management.

Digi engineers are ready with the documentation and training to support your team throughout deployment, including as-needed installation services and ongoing managed support.*

DELIVERABLES:

- **DEVICE CONFIGURATION**
- **TEST PLAN DEVELOPMENT AND EXECUTION**
- **PILOT PROGRAM MANAGEMENT**

** Digi Installation and Managed Solution and Support Services are available separately.*

Connect with confidence.

Don't wait for impending network shutdowns in order to get caught up. From site surveys to installation, get ahead and stay ahead with Digi LTE Migration Services. Start with expert resources and proven deployment tools.



© 1996-2021 Digi International Inc. All rights reserved. 91004248 B2/621

While every reasonable effort has been made to ensure that this information is accurate, complete and up-to-date, all information is provided "AS IS" without warranty of any kind. We disclaim liability for any reliance on this information. All registered trademarks or trademarks are property of their respective owners.

2G/3G Shutdown Timeline



Call DIGI LTE Migration Services at 877.912.3444

Digi.com/LTE-Network-Migration-2



* For qualifying LTE Migration projects.



/digi.international



@DigiDotCom



/digi-international