



Monitor, analyze and control with Digi Axess

Digi Connect Sensor XRT-M

Leverage the power of Digi Axess and native MQTT integration for unparalleled remote monitoring

Digi Connect® Sensor XRT-M with **Digi Axess** offers a versatile solution for remote monitoring, catering to businesses' diverse preferences. With the flexibility of the cloud, Digi Axess seamlessly adapts to provide consistent and reliable readings and a user-friendly interface to enhance operational efficiency.

Digi Connect Sensor XRT-M is a rugged, battery-powered cellular gateway designed for seamless remote monitoring in industrial environments. With native support for MQTT — the industry standard protocol for lightweight, reliable messaging — it enables direct data communication from field sensors to your broker and Digi Axess. Setup is quick and intuitive, allowing you to deploy and start receiving data in under 10 minutes.

Digi Connect Sensor is designed for telemetry monitoring, while Digi Axess uncovers actionable insights from your remote assets. Our web-based system ensures a quick and efficient setup process with streamlined configuration, comprehensive data analytics, and the ability to tailor reports and alerts to your specific needs.

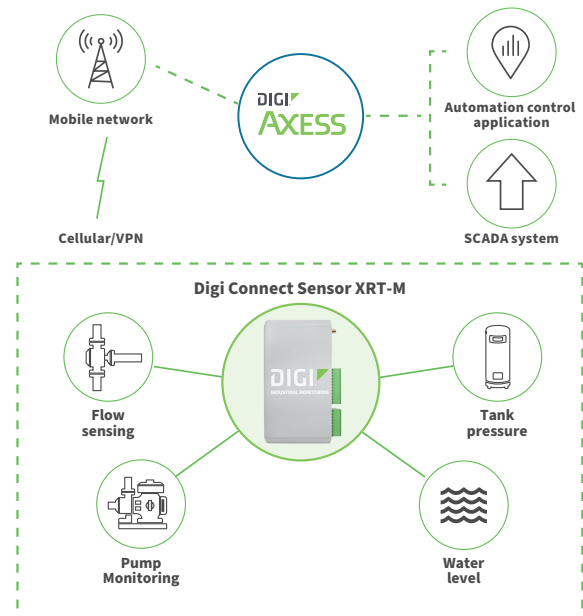
With Connect Sensor, you can effortlessly configure sensors and gain valuable insights through our powerful analytics platform. Whether you're involved in water management, green stormwater infrastructure, tank monitoring, industrial gas distribution, mining, or environmental regulatory compliance, Digi Connect Sensor XRT-M is the complete solution for your monitoring needs.

Applications and use cases include water & wastewater management, oil and gas operations, industrial automation, and environmental monitoring to track and maintain quality, safety, compliance and operational efficiency.

Key features, benefits and applications

- Extended battery life with lightweight cloud connection and dual 12 Ah batteries
- Rated for industrial environments with wide temperature range and C1D2 certification with NEMA enclosure
- Device health and sensor data stored in **Digi Axess**
- Mobile management with Digi Axess app (**iOS / Android**)
- Configurable read and report intervals
- Connect to and power multiple sensors
- Compatible with a range of industry-standard sensors
- MQTT support for flexible data integration
- Modbus protocol support
- Global cellular coverage

Application example



Related Digi devices and software



Digi Z45 Industrial Controller



Digi Z45 RMS



Digi Axess



Digi Z1201 I/O Module

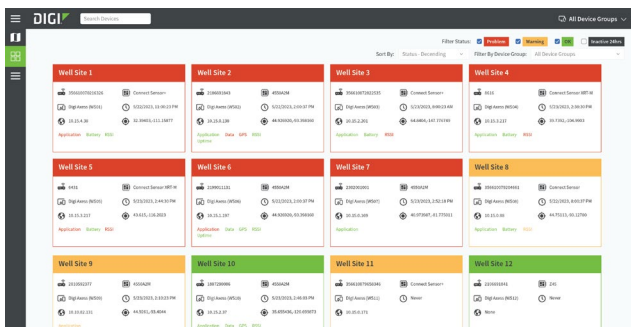


Digi Data Plans

Digi Connect Sensor XRT-M with Digi Axxess

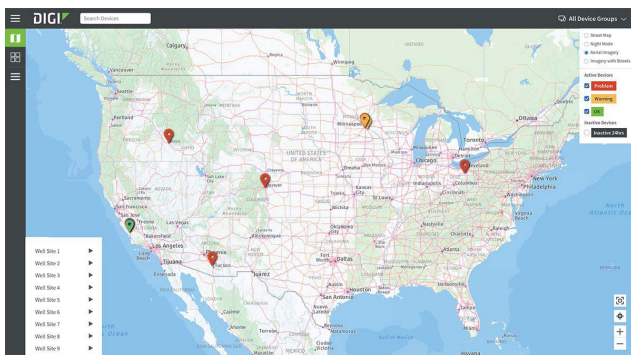


Digi Connect Sensor XRT-M connects to a wide range of sensors through versatile I/O options, collecting critical data from remote assets. With MQTT integration, it can transmit data to [Digi Axxess](#) and to your broker, facilitating instant analytics and decision-making. The device is designed for quick deployment, with a user-friendly interface that simplifies configuration and management.



View updated status of all assets and locations

Deploy Connect Sensor in minutes and start creating reliable data from remote infrastructure and assets, with the mobile app displaying sensor readings, making monitoring possible in places that were previously cost prohibitive.



View and filter assets using detailed map and aerial views

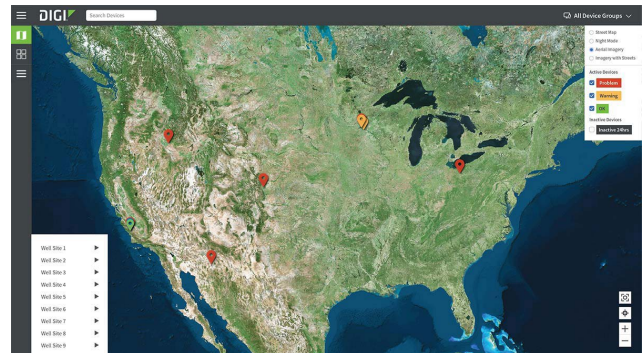
Our monitoring solutions are designed to seamlessly interface with a diverse range of sensors, delivering data wherever you need it. Standard support includes analog data such as current and voltage, widely used protocols including Modbus RTU and ASCII.

Learn more about Digi Axxess at digiaxxess.com.

How Digi Connect Sensor XRT-M Works

Connect Sensor is equipped with both digital and analog inputs, including four analog inputs that can be customized to function as either voltage or current loop inputs. Each of these inputs comes with a user-enabled power output. This feature allows the Connect Sensor to provide configurable DC voltage level output that can power nearly any industry-standard sensor.

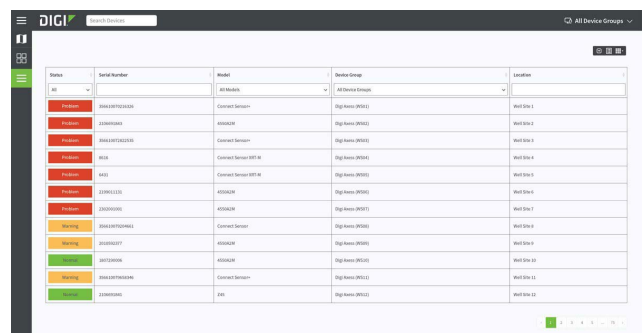
The Connect Sensor features dynamic digital input capabilities that extend beyond the standard. It is highly customizable and can be configured to count pulses from mechanical switches and pulsed output meters. The digital input also has the ability to wake the Connect Sensor from sleep mode upon detecting a rising and falling edge.



Monitor sites with an intuitive interface and detailed reports

Value and Capabilities

- **Monitor and analyze:** Start creating actionable field data in minutes
- **Sense the calm before the storm:** our data driven approach enables proactive solutions
- **Flexible sensor integration:** Digi's "bring your own sensor" approach allows you to adopt a unified strategy for data collection, storage, and distribution, providing greater standardization and efficiency.
- **Effortlessly manage your sensors:** Enjoy streamlined web-based logic, processing, and analytics capabilities. Input and manage your sensor settings with ease using our intuitive web-based configuration.
- **Achieve optimal efficiency with Digi Axxess:** Your data is processed in the cloud and delivered to you when it is needed most with tailored alerts, alarms, and reports through various channels, such as text message, cloud, and email. Our advanced alarming logic allows you to make informed decisions and optimize your operations.



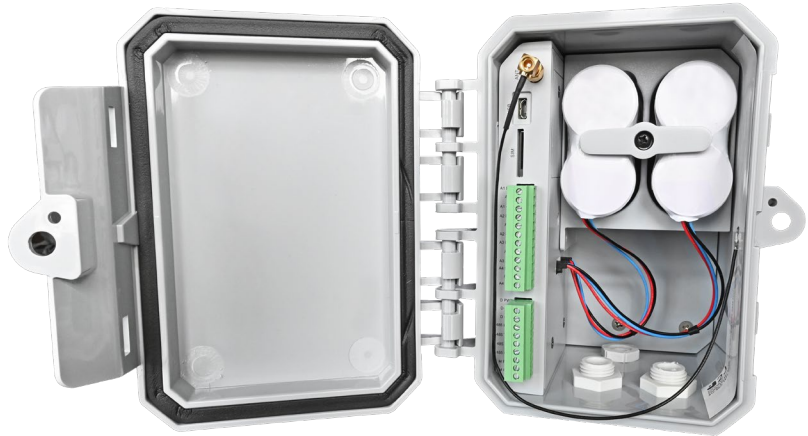
Sort and search assets to identify issues and maintain control

Specifications

Digi Connect Sensor XRT-M

WWAN	
CELLULAR MODES	Dual-mode LTE-M/NB-IoT
4G BANDS	B1, B2, B3, B4, B5, B8, B12, B13, B18, B19, B20, B25, B26, B27, B28, B66, B71, B85
2G BANDS	B2, B3, B5, B8
ANTENNA M110	SMA connector
ANTENNA M210	Internal antenna
SIM SLOTS	1, standard size (2FF)
MANAGEMENT	
CONFIGURATION AND MANAGEMENT	Digi Axxess
MQTT SUPPORT	Direct-to-broker, or to Digi Axxess and direct-to-broker
POWER (Does not include power draw of external sensors)	
EXTERNAL POWER INPUT RANGE	9 VDC to 30 VDC
BATTERY AND BATTERY LIFE	Dual 7.2 V, 12 Ah, lithium thionyl chloride, non-rechargeable, replaceable; ~5 years (at 2 reads/transmits per day)
POWER DRAW, SLEEPING	115 micro watts
POWER DRAW, PEAK TRANSMIT	14.4 watts
SENSOR PROTOCOL SUPPORT	
MODBUS	Modbus RTU and ASCII, connect to up to 4 sensors
ANALOG I/O	
INPUTS	4, configurable as 4/20 mA or 0 to 10 VDC analog inputs
INPUT VOLTAGE RANGE	0 to 10.5 V (analog input)
INPUT CURRENT RANGE	4 to 22 mA (current loop input)
INTERNAL A/D CONVERTER	12-bit
DIGITAL	
PORTS	1 digital input or pulse counter input
INPUT RANGE	0 to 0.6 VDC logic low; 2.2 V to 30 VDC logic high
MAX INPUT VOLTAGE	30 VDC
MAX PULSE COUNT FREQUENCY	2 kHz
OUTPUT POWER	
PORTS	6
OUTPUT VOLTAGE OPTIONS	3.3, 5, 15, 24 VDC
MAX CURRENT OUTPUT	200 mA
ENVIRONMENTAL	
OPERATING TEMPERATURES	-35 °C to 70 °C (-31 °F to 158 °F)
STORAGE TEMPERATURE	-40 °C to 85 °C (-40 °F to 185 °F)
RELATIVE HUMIDITY	90%
BATTERY DISCHARGE	Less than 1% per year if stored at 30 °C (86 °F)
PHYSICAL	
DIMENSIONS (L x W x H): M110	149.9 mm x 76.2 mm, 22.2 mm (5.9 in x 3 in, 0.875 in)
DIMENSIONS (L x W x H): M210	194.97 mm x 157.05 mm, 120.78 mm (7.68 in x 6.18 in x 4.76 in) excluding glands
WEIGHT: M110	0.20 kg (0.45 lb)
WEIGHT: M210	1.36 kg (3 lb)
LEDS INDICATORS	When turned on with magnet
ENCLOSURE RATING: M110	IP30
ENCLOSURE RATING: M210	IP68, NEMA 6P

Digi Connect Sensor XRT-M with NEMA Enclosure (M210)



Top



DIGI
INDUSTRIAL MONITORING



Specifications	Digi Connect Sensor XRT-M
REGULATORY APPROVALS	
SAFETY	UL 60950-22 Environmental; UL/IEC/EN 62368-1:2014 / A11:2017; CSA 22.2 UL 121201 & CSA C22.2 NO. 213-17, Nonincendive Electrical Equipment for Use in Class I and II, Division 2 and Class III, Divisions 1 AND 2 Hazardous (Classified) Locations; UL Class 1 Division 2 with corresponding Canadian certifications EN IEC 60079-0:2018 EN 60079-15:2010
EMISSIONS	FCC part 15 Subpart B class B with KDB 996369 D04; EN 301489-1-1 V2.2.3; EN 301489-17 V3.2.4 Industry Canada (IC); ICES-003, Issue 6:2016 updated 4:2017
IMMUNITY	EN 55035
WARRANTY	
PRODUCT WARRANTY	3-year

Part Numbers	Digi Connect Sensor XRT-M*
CSENSE-M110	Digi Connect Sensor XRT-M — IP30, mains powered DIN rail mountable remote monitor
CSENSE-M210	Digi Connect Sensor XRT-M — NEMA enclosure, mains/battery-powered remote monitor, including batteries and antenna
CSENSE-M210-N	Digi Connect Sensor XRT-M — NEMA enclosure, mains/battery-powered remote monitor, including antenna (no batteries)

*Antennas and accessories sold separately unless otherwise noted.

Contact Digi for Digi Data Plan options and pricing, or visit digi.com/support/professional-services/managed-connectivity-services.

Part Numbers	Digi Axes
DIGI-AXESS-1YR	Digi Axes — 1-year subscription
DIGI-AXESS-3YR	Digi Axes — 3-year subscription

Part Numbers	Accessories
76002149	Digi Connect Sensor XRT-M Battery (single)
76002150	Digi Connect Sensor XRT-M Battery (2-pack)
76002152	Digi Connect Sensor XRT-M Pole Mount Kit
76002151	Digi Connect Sensor XRT-M Magnetic Mount Kit
76002155	Digi Connect Sensor XRT-M Internal Antenna
76000927	Digi Connect Sensor Magnetic Key Chain (2-pack)
76000926	External Indoor antenna — cellular, 3G/4G/LTE
76002067	Outdoor SMA antenna — cellular, 3G/4G/LTE

For more information, please visit digi.com.



For more information about Digi Connect Sensor XRT-M,
visit digi.com/connect-sensor-xrt-m.

877-912-3444 | 952-912-3444

