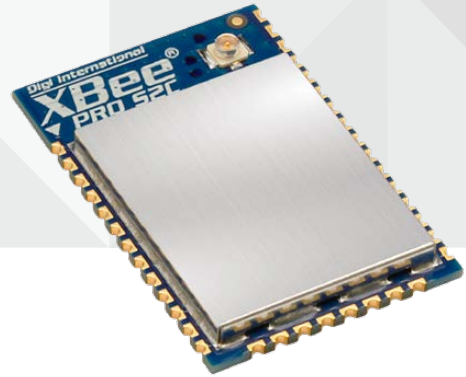




DIGIMESH
RF MODULES
FOR OEMS



DIGI XBEE-PRO DIGIMESH

Embedded DigiMesh modules provide OEMs with a simple way to integrate mesh technology into their application

Digi XBee-PRO® DigiMesh® RF modules provide cost-effective wireless connectivity to electronic devices. They are interoperable with other DigiMesh feature set devices, including devices from other vendors.

Digi XBee-PRO DigiMesh modules are ideal for applications in the energy and controls markets where manufacturing efficiencies are critical.

The Serial Peripheral Interface (SPI) provides a high-speed interface and optimizes integration with embedded microcontrollers, lowering development costs and reducing time to market.

Digi's DigiMesh compatible module uses a Silicon Labs EM357 SoC with a 32-bit ARM® Cortex® M3 processor.

BENEFITS

- Surface mount form factors enable flexible design options
- Link budgets of 110 dB for Digi XBee® and 119 dB for Digi XBee-PRO®
- Industry-leading sleep current
- Firmware upgrades via UART, SPI or over the air (OTA)
- Turnkey development available from [Digi WDS](#)

RELATED PRODUCTS



Digi XBee® Gateways



Modules



Network Extenders

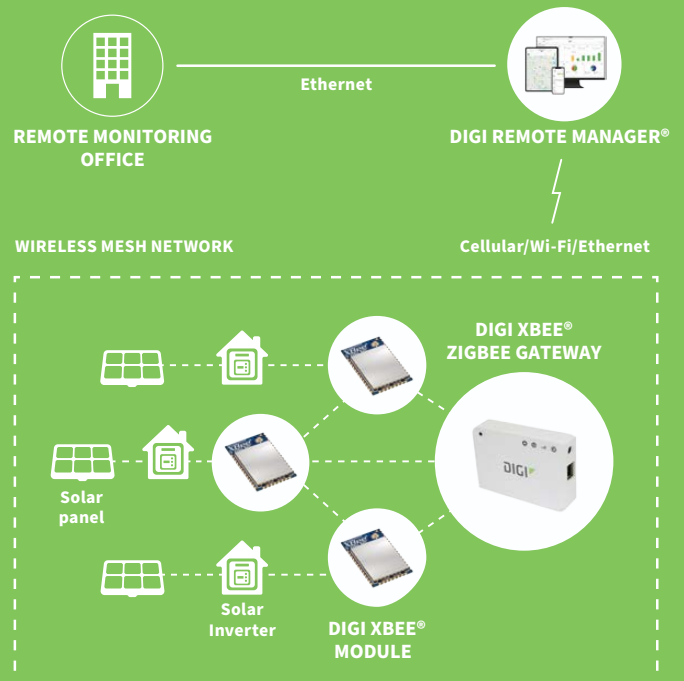


Development Kits



Digi Remote Manager®

APPLICATION EXAMPLE



SPECIFICATIONS

Digi XBee-PRO DigiMesh

PERFORMANCE

TRANSCEIVER CHIPSET	Silicon Labs EM357 SoC
DATA RATE	RF 250 Kbps, serial up to 1 Mbps
INDOOR/URBAN RANGE*	Up to 90 m (300 ft)
OUTDOOR/RF LINE-OF-SIGHT RANGE*	Up to 3200 m (2 miles)
TRANSMIT POWER	63 mW (+18 dBm)
RECEIVER SENSITIVITY (1% PER)	-101 dBm

FEATURES

SERIAL DATA INTERFACE	UART, SPI
CONFIGURATION METHOD	API or AT commands, local or over-the-air (OTA)
FREQUENCY BAND	ISM 2.4 GHz
FORM FACTOR	Surface mount
INTERFERENCE IMMUNITY	DSSS (Direct Sequence Spread Spectrum)
ADC INPUTS	(4) 10-bit ADC inputs
DIGITAL I/O	18, no RSSI PWN
ANTENNA OPTIONS	SMT: RF pad, PCB antenna, or U.FL connector
OPERATING TEMPERATURE	-40° C to 85° C (-40° F to 185° CF)
DIMENSIONS (L X W X H)	SMT: 2.199 x 3.4 x 0.305 cm (0.866 x 1.33 x 0.120 in)

NETWORKING AND SECURITY

PROTOCOL	Digi XBee® DigiMesh® 2.4 (proprietary 802.15.4 based mesh protocol)
ENCRYPTION	128-bit AES
RELIABLE PACKET DELIVERY	Retries/acknowledgements
IDS	PAN ID and addresses, cluster IDs and endpoints (optional)
CHANNELS	15 channels

POWER REQUIREMENTS

SUPPLY VOLTAGE	2.7 to 3.6 V
TRANSMIT CURRENT	115 mA at 3.3 VDC
RECEIVE CURRENT	34 mA at 3.3 VDC
POWER-DOWN CURRENT	<1 µA at 25° C (77° F)

REGULATORY APPROVALS

FCC, IC (NORTH AMERICA)	Yes
ETSI (EUROPE)	No
RCM (AUSTRALIA AND NEW ZEALAND)	No

*Range figure estimates are based on free-air terrain with limited sources of interference. Actual range will vary based on transmitting power, orientation of transmitter and receiver, height of transmitting antenna, height of receiving antenna, weather conditions, interference sources in the area, and terrain between receiver and transmitter, including indoor and outdoor structures such as walls, trees, buildings, hills, and mountains.

PART NUMBERS**DESCRIPTION****DIGI XBEE-PRO DIGIMESH MODULES**

XBP24CDMPIS-005

Digi XBee-PRO DigiMesh SMT PCB ant, 250000 bps, New FEM

FOR MORE INFORMATION
PLEASE VISIT **DIGI.COM**

DIGI SERVICE AND SUPPORT / You can purchase with confidence knowing that Digi is always available to serve you with expert technical support and our industry leading warranty. For detailed information visit www.digi.com/support.

© 1996-2022 Digi International Inc. All rights reserved.
All trademarks are the property of their respective owners.

91004528
A5/622

DIGI INTERNATIONAL WORLDWIDE HQ
877-912-3444 / 952-912-3444 / www.digi.com

DIGI INTERNATIONAL JAPAN
+81-3-5428-0261 / www.digi-intl.co.jp

DIGI INTERNATIONAL GERMANY
+49-89-540-428-0

DIGI INTERNATIONAL SINGAPORE
+65-6213-5380

DIGI INTERNATIONAL CHINA
+86-21-50492199 / www.digi.com.cn

