



# Traffic Management: The Next Generation

Upgrade and optimize your system quickly and cost effectively

## Intelligent Traffic Management

Digi offers secure, scalable, high-performance traffic management communication solutions to help cities reduce congestion with centralized management and control. Reliable, configurable, high-speed cellular communications are paired with [Digi Remote Manager](#) (DRM) to prepare smart cities for evolving technologies, including connected vehicles and high speed, low latency 5G.

## 20 Minutes To Online

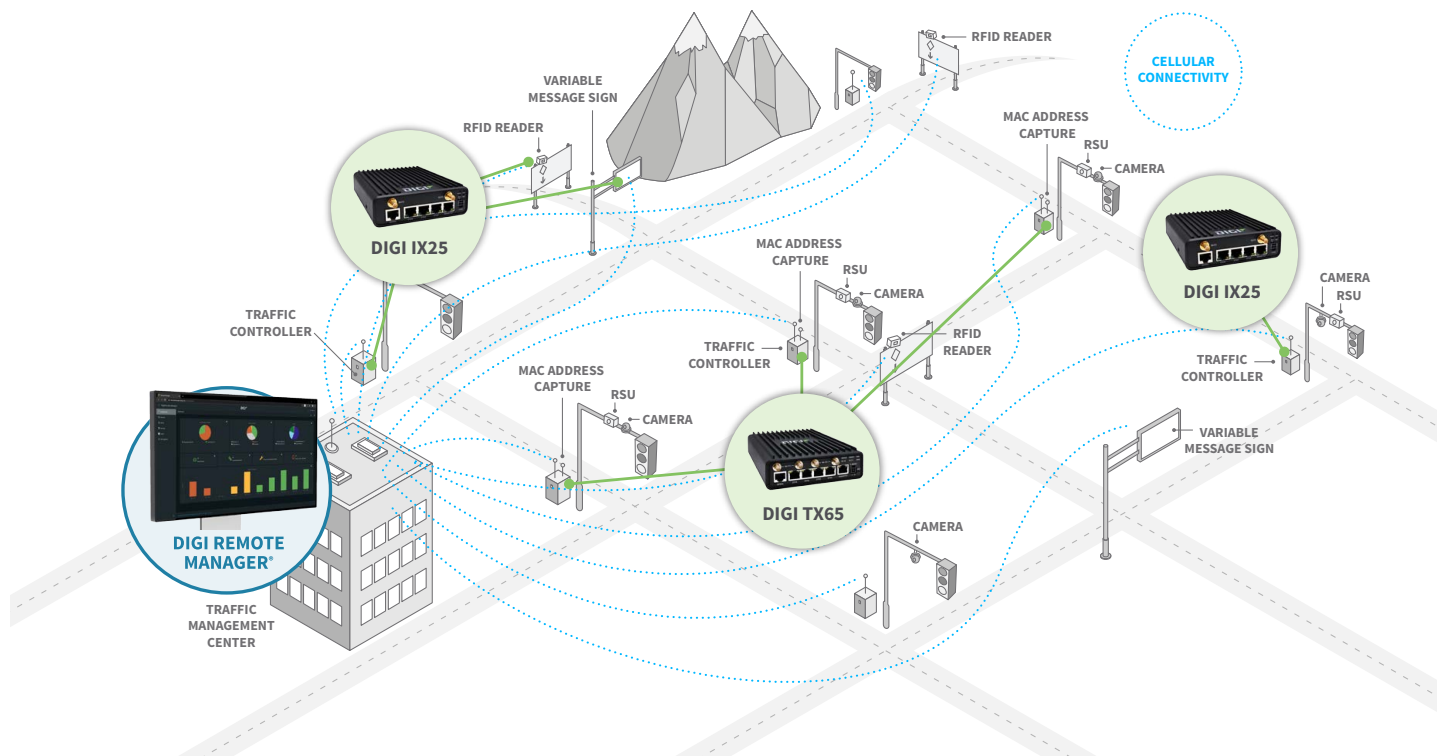
Configure and deploy faster and more effectively with the zero-touch configuration tools in Digi Remote Manager. Cut deployment costs by completing installs in record time.

## Security From Ransomware

Install, monitor and manage your deployed solution with confidence. Digi TrustFence, the robust security framework integrated into Digi cellular routers, provides multi-layer protection from cyberthreats.

## Connected, Autonomous Future

Deploy connected vehicle functionality into your traffic management solution today to be prepared for what's to come. Digi helps your intelligent transportation system (ITS) team plan for future technology, such as connected vehicles and 5G.



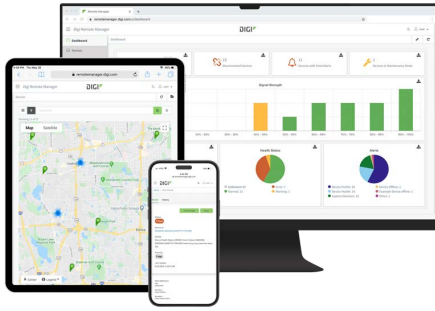
For more information, visit:

[www.digi.com](http://www.digi.com)

877-912-3444 | 952-912-3444

© 2026 Digi International Inc. All rights reserved.





# Digi can help you transition to smart traffic management



**Emergency Routing**



**Adaptive Control**



**Backhaul Communication**



**Connected**



**Public Transit**



**Simplified Infrastructure**

## Digi Remote Manager

Digi Remote Manager is Digi's cloud-based network management and monitoring platform. With advanced zero-touch provisioning, it enables municipalities to configure a network of cellular routers for rapid deployment, so field technicians can expedite installation, dramatically reducing costs. Digi Remote Manager also automates mass firmware updates and provides visibility into key performance metrics, to take the guesswork out of troubleshooting.

## Connect with Digi

Seeking next-generation solutions and support?

- ✓ [Contact us](#) to talk to a Digi expert.
- ✓ [Sign up for our newsletter](#) to learn about emerging trends and new solutions.
- ✓ [Shop for solutions](#) from Digi and our partners.



### Digi TX65

Single traffic applications

- 5G eMBB with Cat 20 LTE fallback
- Single-modem or dual-modem options plus DSDA
- Multi-port: 1x 2.5 GbE WAN, 4x 1GbE LAN, RS232/RS485 serial
- Ideal for:
  - Traffic management and signal controllers
  - Roadside cabinets and intersection connectivity
  - Traffic and ITS cameras (video surveillance)
  - Variable message signs
  - Transit signal priority (wayside)
  - Cellular failover and redundancy



### Digi IX25

Multiple traffic applications

- 5G RedCap, 5G eMBB and LTE models
- Cellular backup (failover)
- FirstNet Capable™ LTE-Advanced Cat 7
- SOC 2, Type 2 and FIPS 140-3 validated
- Dual SIM/Digi eSIM, four Gigabit Ethernet ports, serial
- NEMA TS2 rated; extended operating temperature: -40 °C to 75 °C
- Ideal for:
  - Traffic signal controllers
  - Traffic cameras
  - Roadside units (RSUs)
  - Digital/analog applications
  - RFID readers

For more information, visit:

[www.digi.com](http://www.digi.com)

877-912-3444 | 952-912-3444

© 2026 Digi International Inc. All rights reserved. B2/626 91004422

