



Helping You Make the Right Calls

Consolidate public safety communications
into one vehicle area network

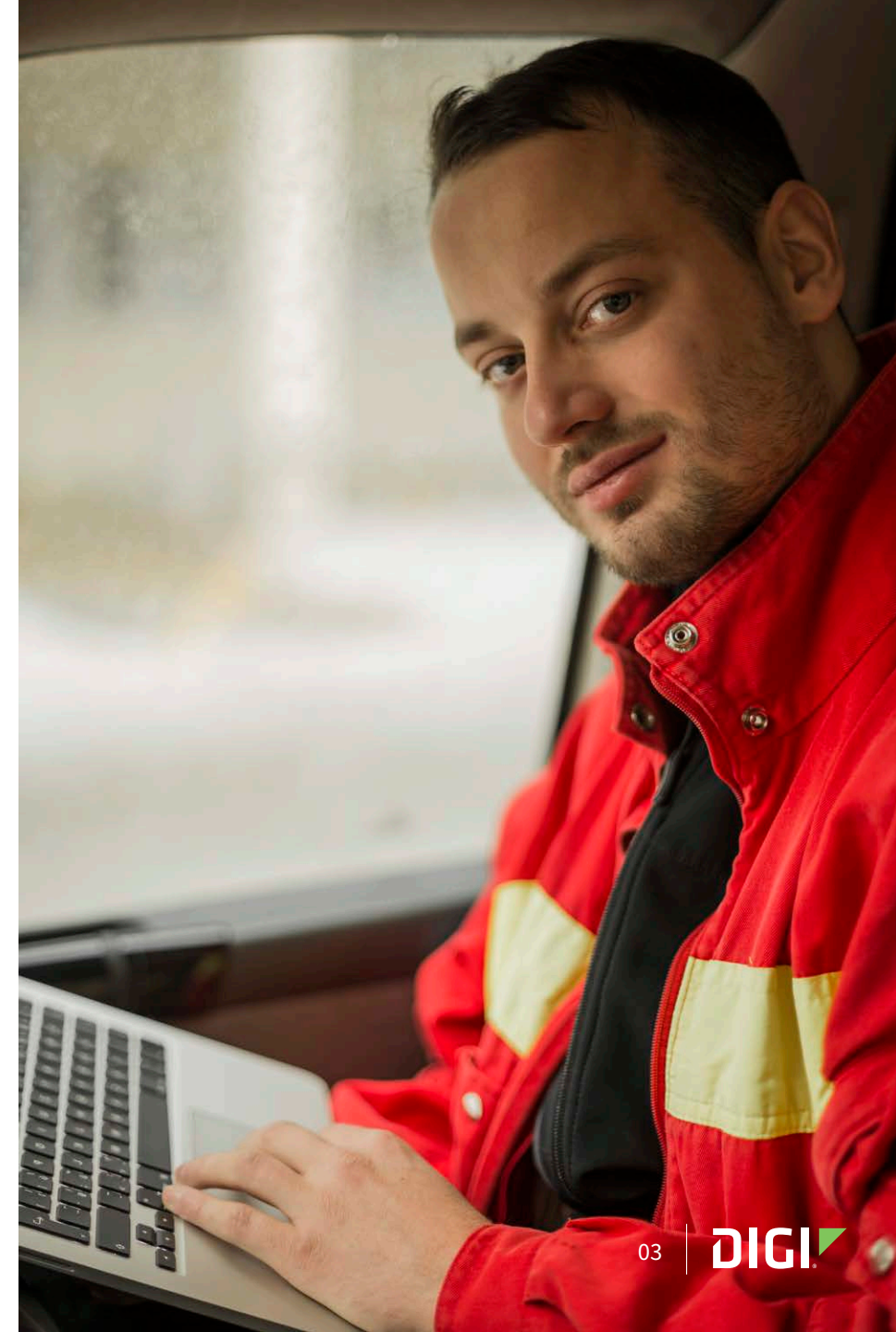
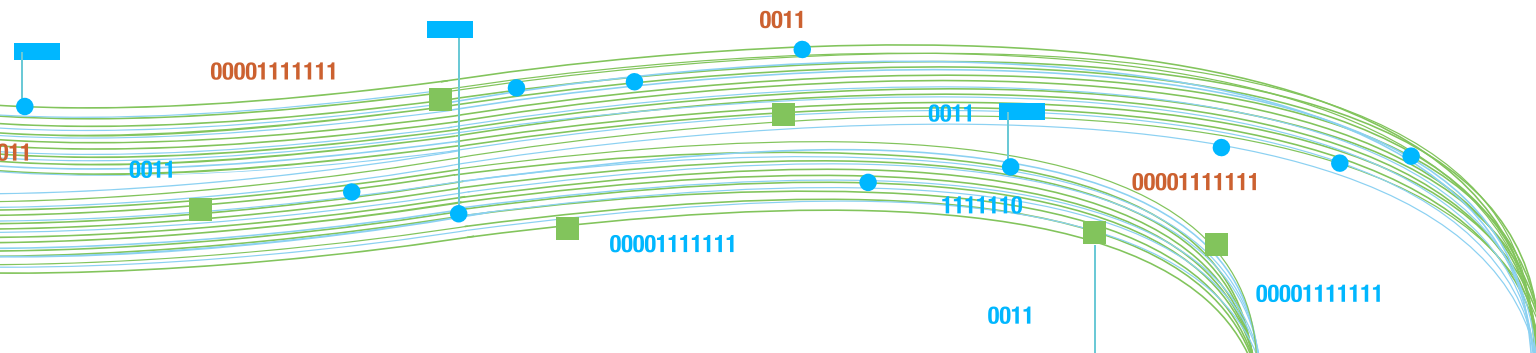
Table of Contents

The New Era of Communication for First Responders.....	3
Communications for the Front Line	4
Time <i>Is</i> on the Line, and Seconds <i>Do</i> Matter	5
Use Case 1: Mission-Critical Communications for First Responders.....	6
Use Case 2: Streamlined, Cost-Effective Police Communications	7
Use Case 3: Reliable, Connected Ambulance Communications	8
Use Case 4: Relentlessly Reliable Communications in Public Emergencies	9
Use Case 5: Connectivity Anywhere for Mobile Command Centers.....	10
Benefits of a Comms Upgrade	11
Meet Digi SAFE™	12
Complete, Cost-Effective Connectivity	13
Software: A Command Center for Emergency Vehicles	14
Hardware: The Most Rugged and Reliable Routers for the Job	15
Digi TX40: The Backbone of Reliable, Cost-Effective Communications	16
Keep an Eye on the Situation	17
Security. Security. Security.....	18
Relentless Reliability in Any Environment	19
The Benefits of Digi SAFE	20
Digi Expertise at Your Service.....	21
Find Out More About Digi SAFE	22

The New Era of Communication for First Responders

Today, police, fire, and EMS vehicles rely on broadband connectivity from cellular VPNs, satellite GPS (GNSS), Wi-Fi, Bluetooth, and Ethernet-connected devices such as laptops, handheld radios, digital video recorders (dashboard and body cameras), and much more.

Add in the multiple cellular carriers, first responder networks, and public connectivity that teams rely on during emergency events, and it's easy to see that a new — and complex — era has arrived.



Communications for the Front Line

When your first responders arrive, you want them armed with accurate, timely, and comprehensive information, and you want them in constant communication as events unfold. Cross-team communication enhances their ability to deliver services under changing circumstances and threats. Multiple vehicles can share data to reduce misinformation and distractions so officers, firefighters, and paramedics can collaborate most effectively.

Always-on, always-up communication and real-time connectivity means your command center, dispatchers, and field teams are always in touch — and that translates into a higher level of public safety.





Time *Is* on the Line, and Seconds *Do* Matter

Whether it's a simple traffic stop or an “all-hands-on-deck” public safety or natural disaster incident, if the most common problem that costs your team precious response time is poor communications, then your technology is ripe for an upgrade — to a seamless, cost-effective solution for reliable connectivity for first responders and emergency vehicles.

Imagine a world where every vehicle and every response team is wholly connected in order to leverage even more resources, more quickly, and more effectively — via a high-speed public safety network utilizing equipment that's been specifically built for persistent communications in often-rugged environments.

WITH SMART CITY CONNECTED TECHNOLOGIES

Emergency teams could
reduce response time by:

20-35%

¹

Reduce criminal incidents
such as assault, robbery,
burglary and auto theft by:

30-40%

²

¹ McKinsey & Company

² McKinsey & Company

Use Case 1: Mission-Critical Communications for First Responders

Always-on connectivity for situational awareness and rapid response.

Not only will first responders respond sooner, they'll be better armed with more accurate, more up-to-date, and more comprehensive information. They'll have a much better grasp of the situation upon arrival, and as the event unfolds.

Cross-team communications enhance the level of response required to best suit on-scene safety circumstances and threat status. Multiple emergency vehicles can automatically share data to help reduce misinformation and distractions so that officers can better focus on the job at hand. Mission-critical features such as coordinated lights and cameras improve engagement with other teams and the public, rather than sending constant updates via radios.





Use Case 2: Streamlined, Cost-Effective Police Communications

Turn each emergency vehicle into a communications network hub.

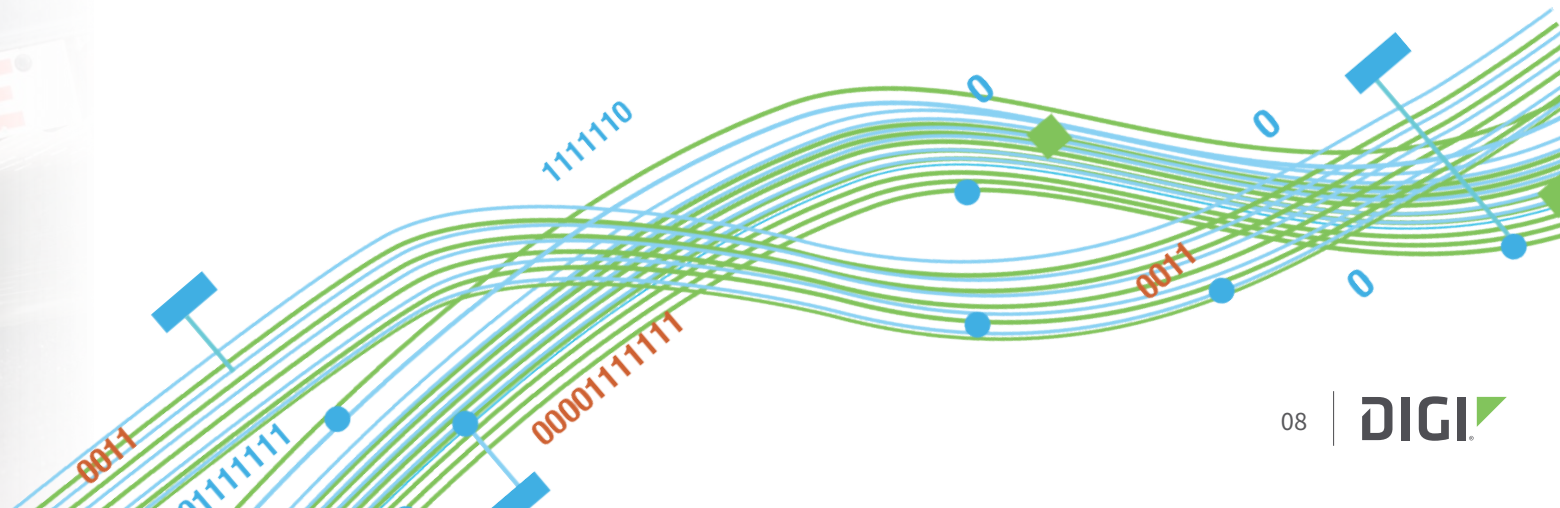
Modernization is just a fact in the ever-changing world of communications technology. Public sector teams must move forward in order to collaborate better. The key is that they do it at the same time, with the same systems and equipment.

You'll find that by integrating and consolidating communications, you can actually reduce carrier and data plan redundancy and associated costs — while reducing network, system and device complexity. You'll also be able to connect previously unconnected systems and peripherals in less time and with less expense than you might expect.



Use Case 3: Reliable, Connected Ambulance Communications

In the same way, connected ambulances can institute more efficient and informed remote care. Mobile devices with always-on connectivity help paramedics streamline data capture and transmit analysis to hospitals immediately to better prepare ERs for incoming patients.





Use Case 4: Relentlessly Reliable Communications in Public Emergencies

Today, emergency teams need solutions that support first responder communication networks — including AT&T FirstNet®, Verizon Frontline and T-Mobile Connecting Heroes — in mission-critical communications solutions that equip every first responder, everywhere, with failure-proof connectivity.



FIRSTNET®
Built with AT&T

VerizonFrontline

**T CONNECTING
HEROES**
FREE UNLIMITED SERVICE FOR FIRST RESPONDER AGENCIES

The diagram illustrates a mobile office bus network architecture. A central **DIGI TX ROUTER** is connected to various components inside and outside the bus:

- Internal Components:**
 - Monitors**, **Laptop and phones**, **Workstation**, **Private meeting room**, and **TV monitor** are all connected to the router via **Ethernet/Wi-Fi**.
 - A **Security Camera** is connected to the router via **Ethernet**.
- External Components:**
 - An **Antenna** and a **Satellite** dish are connected to the router via **Cellular VPN** and **Satellite** links, respectively.
 - A **SATELLITE** in orbit is connected to the router via **GPS (GNSS)**.
 - A **DISPATCH** building is connected to the router via **Cellular VPN**.
 - A **DIGI REMOTE MANAGER** is connected to the router via a **Satellite** link.

Benefits of a Comms Upgrade

Today's modern comms platform for public safety requires fundamentally different and improved technologies, such as 5G and Wi-Fi 6. In fact, data volumes have grown so significantly that 5G is now required to support the increased demand put upon 4G. In the past few years, 5G has become far more pervasive, enabling greater reliability and performance, yielding:

- **Higher frequencies**
- **Faster speeds**
- **Extended range**
- **Lower latency**
- **Tighter security**
- **Higher bandwidth**
- **Greater data complexity**
- **And even... lower costs**

Extended and Backup Connectivity **Digi TX solutions include all the options you need for reliable, always-on connectivity:**

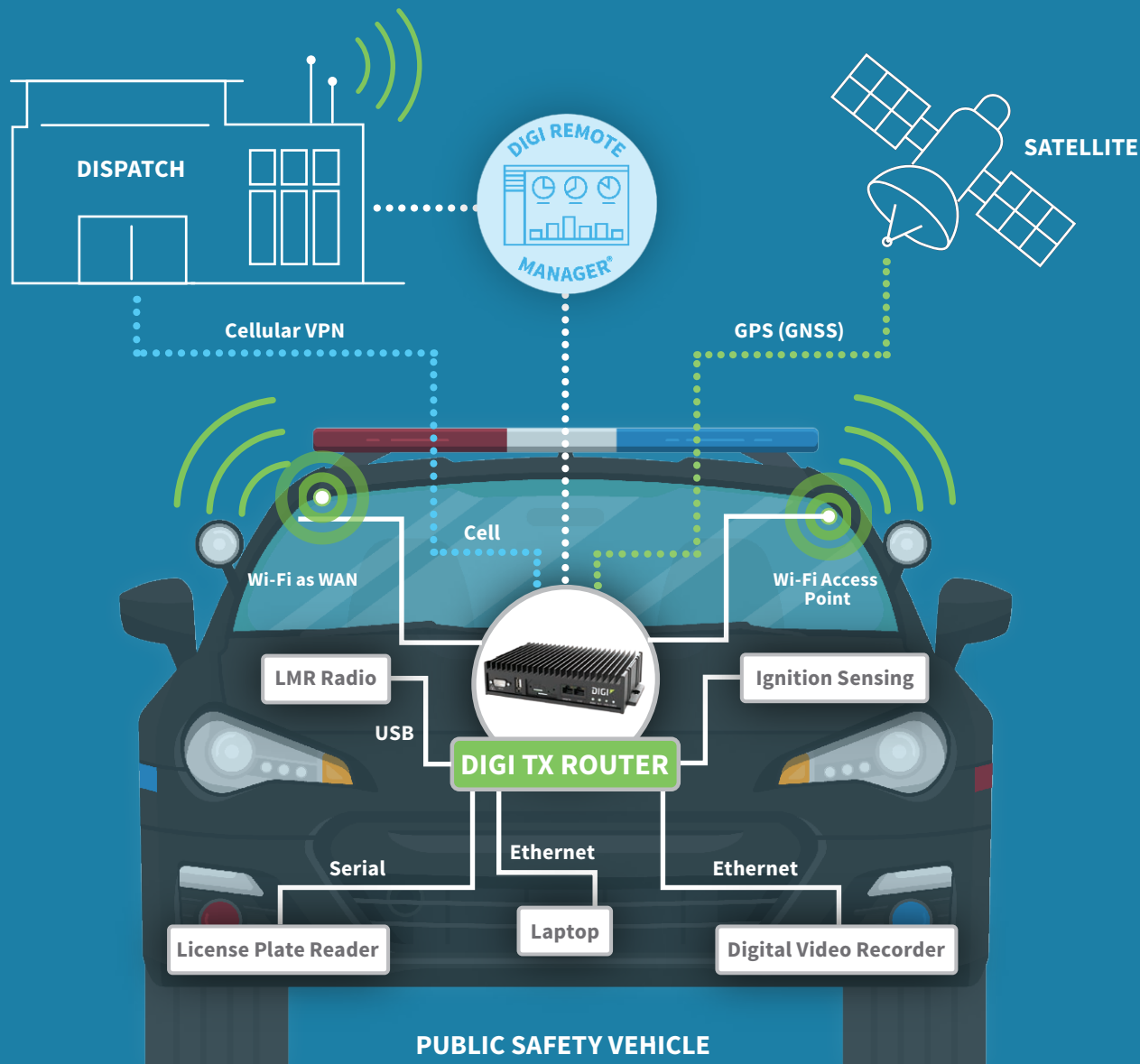
- FirstNet® HPUE for extended range in rural areas
- 4G LTE where 5G is not available
- Dual SIMs for failover to any major North American carrier if the primary carrier connection drops
- And built-in Digi SureLink® for ongoing connection reliability



Meet Digi SAFE™

When it's time to modernize your communications infrastructure and streamline public-safety responses, you're ready for Digi SAFE™, the end-to-end software/hardware solution for first-responder vehicle connectivity. With Digi SAFE, your vehicles act as mobile wireless communications hubs, providing a vehicle area network (VAN), with unshakeable connectivity to command centers, dispatchers, and other safety vehicles, ensuring they never lose touch with police, fire and EMS safety team personnel.





Complete, Cost-Effective Connectivity

With Digi SAFE, emergency vehicles have integrated, reliable, broadband connectivity with cellular VPN, satellite GPS (GNSS), Wi-Fi, Bluetooth and Ethernet. This means your teams can connect laptop computers, handhelds and digital video recorders for both onboard and body cameras. Digi SAFE also supports serial protocols for license plate readers, USB for LMR radios, and ignition sensing for power management.

Digi SAFE provides one complete, cost-effective connectivity solution to support these growing requirements.

Software: A Command Center for Emergency Vehicles

Digi SAFE begins with a command center of its own — Digi Remote Manager® — to centrally manage your fleet. This integrated software platform facilitates the rapid deployment of cellular routers and lets your IT team remotely monitor, troubleshoot and update communications devices in the field — simplifying firmware and security updates. That's especially important as the volume and complexity of data flowing to and from public safety vehicles grows. And it's why you need a high-performance system to manage the variety of communications equipment that IT must continuously oversee and maintain.



Hardware: The Most Rugged and Reliable Routers for the Job

If Digi Remote Manager is the “brains” of the system, Digi TX cellular routers are the “brawn” — built for the rugged conditions that public safety vehicles face, with hardened enclosures and temperature ratings of -34°C to 74°C. These resilient routers incorporate the latest 5G, Wi-Fi 6, and GNSS-UDR connectivity, and are ITxPT-certified for maximum performance and integration flexibility and ease. This means you can consolidate the myriad communications platforms, systems, and devices in your vehicles, reduce complexity, and maximize the use of your budget.



Digi TX40: The Backbone of Reliable, Cost-Effective Communications



Digi TX40 routers are available with 5G and 4G LTE-Advanced Pro, with dual radios that support FirstNet®, Verizon Frontline, and T-Mobile Connecting Heroes standards. ITxPT-compliance maintains interoperability and seamless integration with other vehicle systems for sharing voice, text, and data communications and other information services.

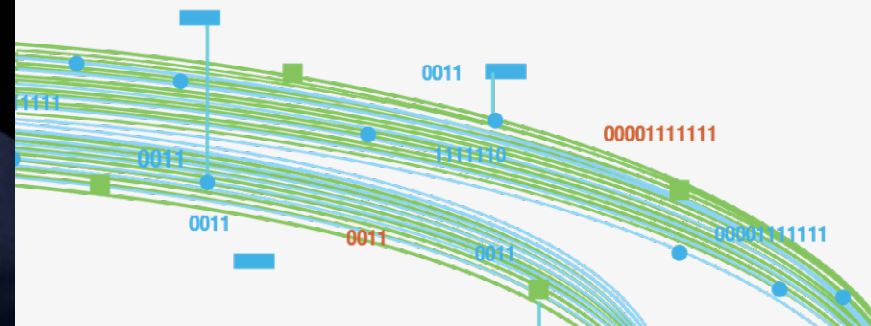


Keep an Eye on the Situation

High-resolution, real-time video greatly enhances situational awareness for dispatchers, command staff and officers on the scene. Digi TX40 with 5G and Wi-Fi 6 can transfer vital information faster, further and more reliably from:

- **Vehicle dash and body cams**
- **License-plate readers**
- **E-ticket systems**
- **Mobile computers**

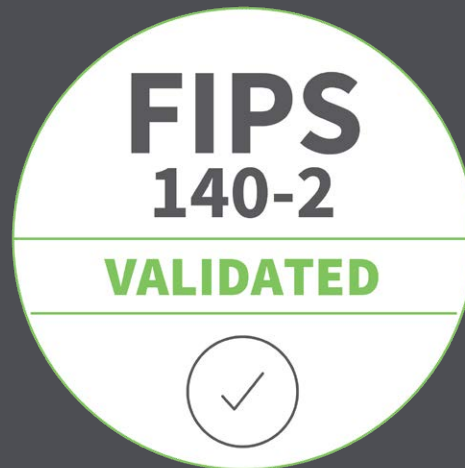
Digi SAFE lets you share consistent and accurate time, location, and updates with other vehicle systems, reducing redundancy, points of failure and costs.



Security. Security. Security.

The three most important words in digital communications.

Cybersecurity is a critical requirement for VANs — and that's why Digi TX40 routers meet the U.S. FIPS 140-2 standard. Digi routers leverage the built-in Digi TrustFence® framework to ensure your systems are secure from day one and stay secure throughout their lifetime — especially as the number and sophistication of threats increase and evolve.



Digi SAFE, powered by Radio IP Armada mobile VPN, efficiently secures your communications with far less overhead. IT staff from multiple agencies can securely share one system within a single operating platform. Session persistence keeps your applications continuously connected, which helps minimize response times and keeps officers safer and more focused on the job.



Relentless Reliability in Any Environment

In conditions that can be harsh and challenging, you need hardware that stands up to vibration, severe weather and variable temperatures. Team communications can never go down — ever. When lives are at risk, you need a network that is hyper-reliable and has the redundancies that prevent any signal loss in any catastrophe, such as built-in dual carrier failover with dual SIM cards, coordinated multipoint (CoMP), and improved tower handoffs.

For better locational awareness, GNSS (satellite)/UDR (untethered dead reckoning), vehicle location, drive duration and arrival times are also essential. And, if your traffic control system allows, the fastest route to the scene can be achieved by closing roads to civilian traffic and controlling stoplights and roadside signage.



The Benefits of Digi SAFE

Always-On Connectivity — Digi SAFE provides the crucial feature every public safety organization needs: fast, reliable, secure connectivity for a full range of in-vehicle computers, devices and scanners.

Designed for Public Safety — Easy-to-use and priced for widespread deployment by departments of all sizes, Digi SAFE includes state-of-the-art software to ensure network security and performance as well as rugged hardware built to withstand punishing vibration and weather extremes.

Cost-Effective Value — Municipal budgets face greater challenges than ever. That's why Digi SAFE is priced to deliver optimal value for the mission-critical investments of public-safety departments.

How Digi SAFE Improves Public Safety Operations

- **Better integration and interoperability, across all devices and platforms**
- **More persistent communications, so that you never drop a connection**
- **More consolidated technologies and control, with less redundancy and duplication**
- **Faster and easier deployments that require less work and staff**
- **Less stress on your budget and your team, so that they can get the job done**

Digi Expertise at Your Service



Digi brings decades of wireless experience connecting devices, machines, and people — and keeping them connected with relentless persistence. Digi provides public sector communications solutions for smart cities, public transit, railways, traffic control, way-finding signage and predictive vehicle maintenance.

When you need industrial-strength hardware and software specifically for public safety — that's where Digi shines. Our products and services incorporate the latest technologies and national infrastructure standards for leading-edge integration and security — with a roadmap that takes you far into the future.

Save time and money with the tools that help you seamlessly integrate systems and configure and deploy devices faster and more effectively. Digi cuts installation costs, reduces IT complexities, and completes your digital transformation projects on time.



Connect with Confidence

Find Out More About Digi SAFE

Get a **FREE** Digi digital transformation analysis of your public safety network management system. We'll show you the best places to start updating your vehicles to get the best results in the short term — and down the road — to help you make the right calls.

Contact us at www.digi.com/contactus to get started today



877-912-3444



digi.com/contactus

9350 Excelsior Blvd. Suite 700 Hopkins, MN 55343

Digi International - Germany

+49-89-540-428-0

Digi International - Singapore

+65-6213-5380

Digi International - Japan

+81-3-5428-0261

Digi International - China

+852-2833-1008