

Digi On-Prem Manager

Configure, deploy and manage connected assets securely on-premises

Digi On-Prem Manager is the technology platform that brings networks to the next level, allowing networks — and the people who manage them — to work smarter. It transforms a multitude of dispersed IoT devices into a dynamic, intelligent network.

Now you can easily configure, deploy, monitor and manage hundreds or even thousands of mission-critical devices from a single point of command.

Edit configurations, update firmware, schedule and automate tasks — all from your desktop, tablet or phone.

You can also easily extend your network at scale with bi-directional, open integration and add intelligence to the edge with custom code, APIs and Python scripts. All the while, its software-defined security diligently safeguards your Digi ecosystem.

Secure Network Management On Premises

Digi On-Prem Manager allows you to securely access devices in the field, monitor critical device metrics.

You can update firmware, configuration and files for individual devices or groups of devices, with alerts and reports for specific events and activities. Set up role-based access control, view audit logs, and integrate with other systems with APIs and custom coding.

Digi On-Prem Manager provides everything you need to securely manage your network on premises.

Manage your devices with Digi On-Prem Manager



Enterprise routers



Industrial routers



Transportation routers



Console servers



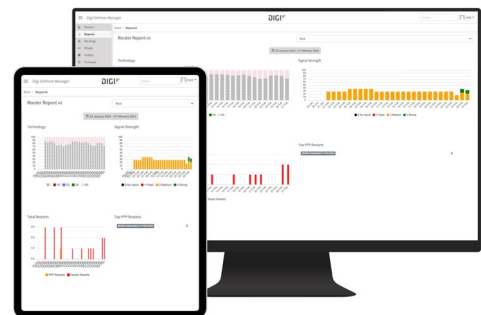
USB-connected devices

Digi On-Prem Manager supports a full range of Digi and third-party devices, IoT applications and environments.

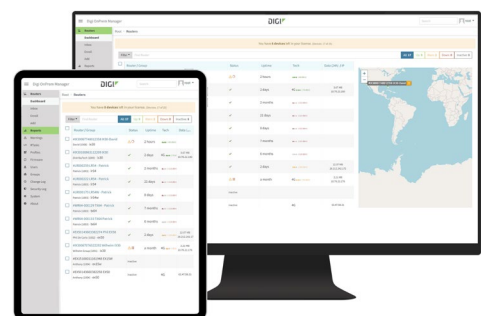
Key features and benefits

- Industry-leading software tools for rapid device deployment, and easier asset management
- Automate mass firmware and software updates to enhance functionality, stay in compliance and scale your deployment
- Access data from edge devices that were previously out of reach
- Integrate device data through open APIs to gain deeper insights and control with third-party applications
- Monitor network, device and asset performance and security with bi-directional communications
- Receive real-time alerts and detailed reports on network health and device conditions

View and manage devices and groups



Monitor, manage and update devices





DIGI ON-PREM MANAGER Configuration

Access, organize and view device metrics

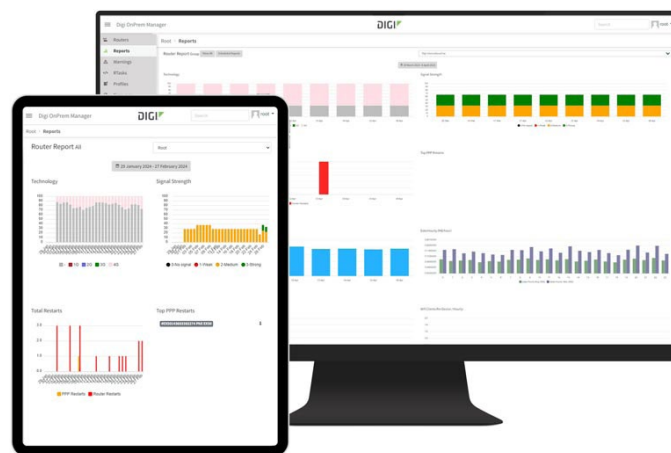
Search for devices using key information such as serial number, hardware type, ICCID, group membership and more options, and organize devices into groups. Access devices via command line or web UI directly over a private network, and view current and historical configuration of devices.

Access device metrics such as uptime, temperature, firmware versions, modem model, data usage, cellular signal and quality, location, IP address and history. Set alerts and warnings for reboots, link restarts, temperature changes, VPN outages and clock drift. Create and view reports for devices or groups including radio technology, signal strength, restarts, data usage, Wi-Fi clients, temperature and more.

Application, platform and supply chain security for advanced protection

Application security features include no default credentials, 2FA required for privileged users, group and role-based access control, logging of security and change events with syslog support, IP ACL lists and blocking/throttling of failed auth requests, and mTLS support for device-to-server connections.

Platform security features include App Armour and systemd sandboxing and application dependencies based on Ubuntu LTS, leveraging security updates from distribution. Service does not establish outbound network connections. Supply chain security features include signed releases and vcs commits, ephemeral and automated build environment, and signed application updates distributed via private APT repository.



Update firmware and configuration

Upload firmware to archive, update one or many devices in one task, and define firmware versions upon device type and group membership. Update device configuration, and apply configuration updates including site specific settings.

Check running configuration with templates, and execute tasks to correct configuration when needed. Perform audits per user or device, view security logs, and authorize devices to connect with the router inbox.

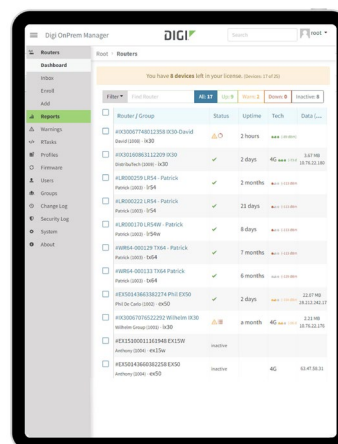
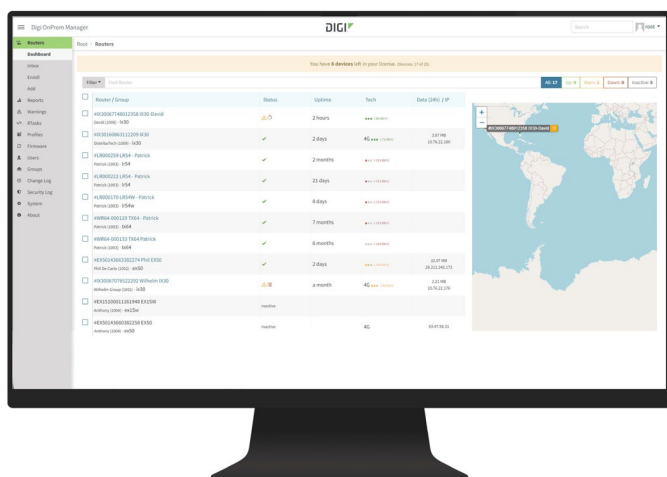
Enter Code From Mobile App



Your account has 2-Step Verification enabled. Please open the Authenticator App on your mobile device and enter the generated "one-time" 6 digit code:

Verify Code

Cancel Login





DIGI ON-PREM MANAGER Management

Digi On-Prem Manager

Digi On-Prem Manager is a proven technology platform that brings networks to the next level, empowering networks — and the people who manage them — to work smarter.

Digi On-Prem Manager transforms a multitude of dispersed IoT devices into a dynamic, intelligent network. It's easy to deploy, monitor and diagnose thousands of mission-critical devices. All the while, software-defined security diligently safeguards the entire Digi ecosystem.

Gain valuable insight about the inner workings of your network

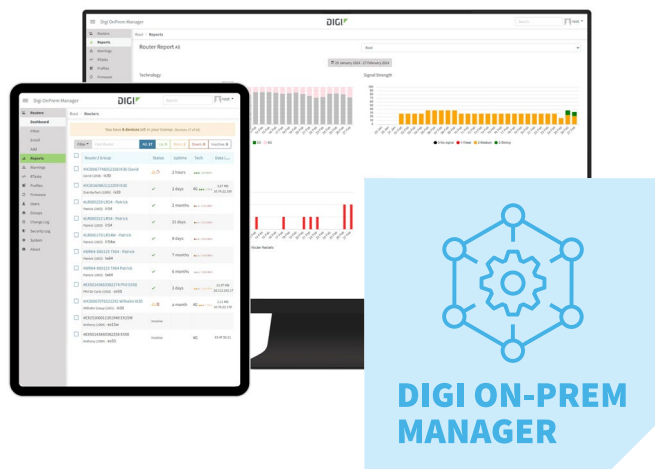
A selection of pre-built reports with critical device health metrics can be customized to include the data you need most. Configure alerts for specified conditions, or trigger business processes based on events.

Connect any device to any platform

Pre-configured APIs make it quicker and easier for users to access, connect and analyze data collected from devices — with no development required. Integrate device data with industry-leading, third-party analytics and visualization dashboard applications. Connecting is simple. For custom integrations, utilize the rich web service API.

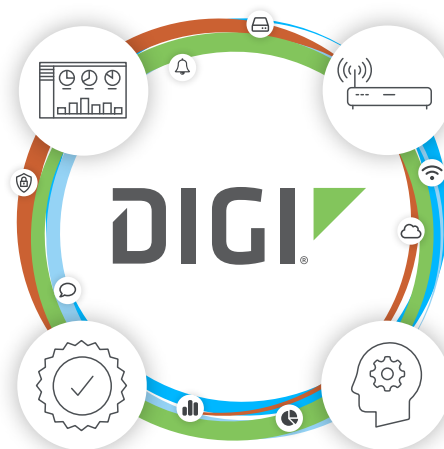
Proven global connectivity and reliability

With over 35 years of industry leadership and experience enabling millions of globally connected products, Digi is a trusted IoT solutions provider, simplifying the way customers design, build, deploy and manage connected devices and applications. Digi also offers cellular integration support, certification assistance, and custom design and build services to get products to market smarter and faster.



Capabilities

- Activate, monitor and diagnose your mission-critical devices from a single point of command and control
- Schedule key operations — including firmware updates and file management — on a single device or on a group of devices, keeping your network functionality up-to-date and maintaining compliance standards
- Manage edge devices out-of-band via console terminal access
- Keep tabs on device health and connectivity across device deployments of any size
- Create reports and enable real-time alerts for specified conditions
- Integrate device data through open APIs to gain deeper insights and control with third-party applications
- Report and alert on performance statistics, including connection history, signal quality, latency and data usage





DIGI ON-PREM MANAGER

Features

Feature	Description	Digi On-Prem Manager
VIEW AND GROUP DEVICE INVENTORY	Add devices to a group to logically organize and manage them.	✓
UPDATE INDIVIDUAL DEVICE SETTINGS	Configure an individual device and update device settings.	✓
UPDATE DEVICE SETTINGS IN BULK	Multi-select devices in the list and load configuration files onto them. This is a basic configuration method, not as powerful as automations or Configuration Manager.	✓
UPDATE INDIVIDUAL DEVICE FIRMWARE	Click on a device in a list and upgrade the firmware.	✓
UPDATE DEVICE FIRMWARE IN BULK	Multi-select devices in the list and load firmware onto them.	✓
DEVICE METRICS	Gain information on devices which can then be used to trigger alarms, and used to aid troubleshooting.	✓
ALARMS	Configure alarms to trigger based on device metrics, connection status, data usage, configuration status and other factors.	✓
REPORTS	Create reports containing device metrics and other data.	✓
WEB SERVICE APIS	Link programmatically using RESTful web service APIs. This facilitates the ability to send data from devices to third-party systems such as AWS or Azure, and connect Digi to a customer's own CRM or management platforms.	✓

*Digi On-Prem Manager subscriptions are available and licensed per server and endpoint device.



DIGI ON-PREM MANAGER
Part Numbers

PART NUMBERS		DIGI ON-PREM MANAGER	
DIGI ON-PREM MANAGER SERVER			
DIGI-OM-VM-1YR	Digi On-Prem Manager Server License — 1-year subscription		
DIGI-OM-VM-3YR	Digi On-Prem Manager Server License — 3-year subscription		
DIGI-OM-VM-5YR	Digi On-Prem Manager Server License — 5-year subscription		
DIGI ON-PREM MANAGER ENDPOINT			
DIGI-OM-EP-1YR	Digi On-Prem Manager Endpoint License — 1-year subscription		
DIGI-OM-EP-3YR	Digi On-Prem Manager Endpoint License — 3-year subscription		
DIGI-OM-EP-5YR	Digi On-Prem Manager Endpoint License — 5-year subscription		

Digi On-Prem Manager is available in 1-, 3- and 5-year subscriptions, and require a server license and one endpoint license per device per year.

For more information, please visit digi.com.



For more information about Digi On-Prem Manager,
visit digi.com/digi-om.

877-912-3444 | 952-912-3444

