



Go-To 5G Connectivity

High-Performance Solutions Wherever 5G Takes You

DIGI



Network connectivity is the key to reliable 5G. Your speed-to-market depends on adopting a solution that you can rely on time and time again. Now, Digi makes it easy for you to take charge and move boldly ahead to the fifth generation cellular standard.

Digi is the go-to solution for 5G connectivity.

- ✓ Fast
- ✓ Reliable
- ✓ Secure
- ✓ Adaptable
- ✓ Scalable
- ✓ Future-proof



MANAGEMENT SOFTWARE

Remote device control, network-wide updates, and data insights
through Digi Remote Manager®

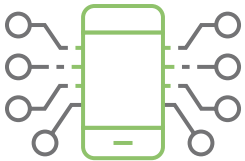


CELLULAR ROUTERS

Enterprise Connectivity
Digi EX50 5G

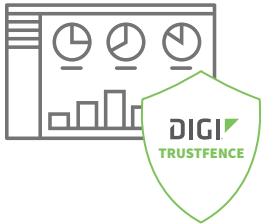
Transit Connectivity
Digi TX64 5G and
TX64 5G Rail

Count on us for expert knowledge and great technical performance, every time.



Be ready for anything.

Choose a solution that is lightning fast and infinitely flexible with integrated security and network management. Digi's streamlined 5G cellular routers provide full-featured, enterprise-grade 4G, 5G and Wi-Fi 6 connectivity for high-performance fixed wireless access (FWA). Digi 5G solutions support failover, private LTE and network slicing with expanded capacity for SD-WAN, 4K/8K cameras and AR/VR applications.



Manage the Digi network intelligently and securely... from anywhere.

Responsible for networks in various locations? Easy. Overseeing multiple devices? That's simple, too. Digi Remote Manager enables you to manage multiple devices across disparate locations from a single, secure platform. You can edit configurations, update firmware, and schedule and automate tasks directly from a desktop or tablet.

Cybersecurity is always a priority. Digi TrustFence® is a built-in device security framework that protects network connectivity at every level.

TECH TIP: For transit applications, use Digi's dual-radio technology to separate public and private data and establish an extra level of security.



Future-proof your network, and your business.

Gain the freedom to cut the wire. Digi's future-ready connectivity allows you to scale networks to any size. You can keep on imagining new ways to take full advantage of 5G speed and data capacity to do more things better, faster and smarter.

TECH TIP: Take inventory of current network connectivity and plan your roadmap to replace 2G/3G with 4G, or upgrade everything to 5G connectivity solutions.

Connectivity That Goes Everywhere 5G Takes You.

Flexibility is key to having one solution for go-to 5G connectivity. With network intelligence at its core, and a selection of devices to meet your 5G connectivity needs, our solution may be the one-and-only you'll ever need for connecting your employees, offices, and IoT devices.

42
Total Devices

0
Devices in Debug Mode

Devices with Fired Alerts



Smart Manufacturing, Warehouses and Light Industrial

Establish secure, private mobile network/CBRS connectivity over 4G LTE and 5G cellular for people and machines. With software-enabled control, you can ensure your network's resiliency. And, with its extended operating temperature range and flexible power options, Digi's 5G enabled solutions support factory agility and network communication with improved reliability and lower installation costs compared to traditional wired or Wi-Fi solutions.

New Age Retail

Adapt instantly to the ever-changing retail environment. Digi can help you tap into 5G speed and capacity to support unique shopping environments and experiences. Go into the future with a complete connectivity solution that offers easy deployment and cost effectiveness, and a partner that provides dependable customer service.

TECH TIP: Temporary Networking

The Digi 5G solution provides secure, reliable Day 1 connectivity for temporary applications like pop-up shops, kiosks, delivery vehicles, events and construction sites. It's ideal for environments with limited or no Internet connection to keep personnel, equipment, HD security cameras and more fully networked. Extended temperature tolerance means our cellular routers can tough it out without heat or AC.

The Office (Anywhere)

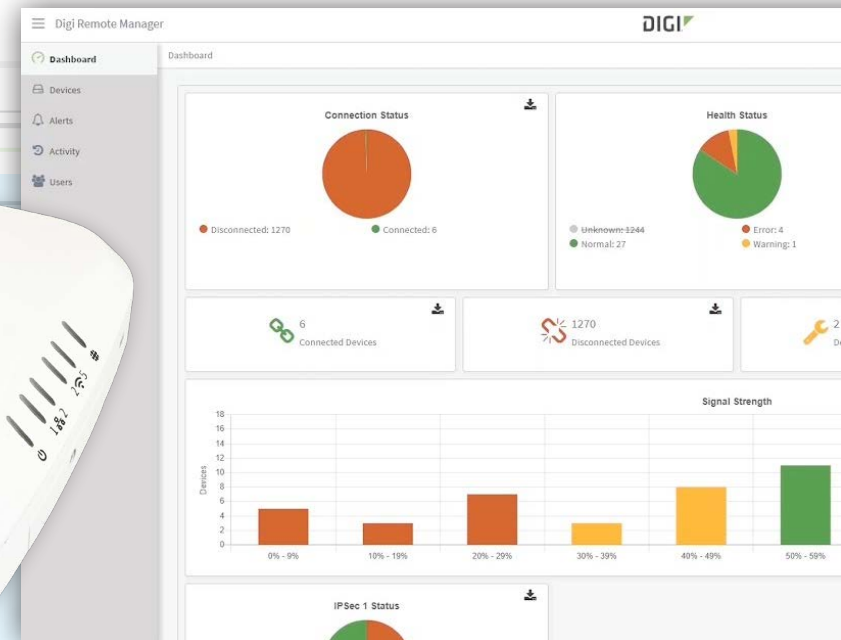
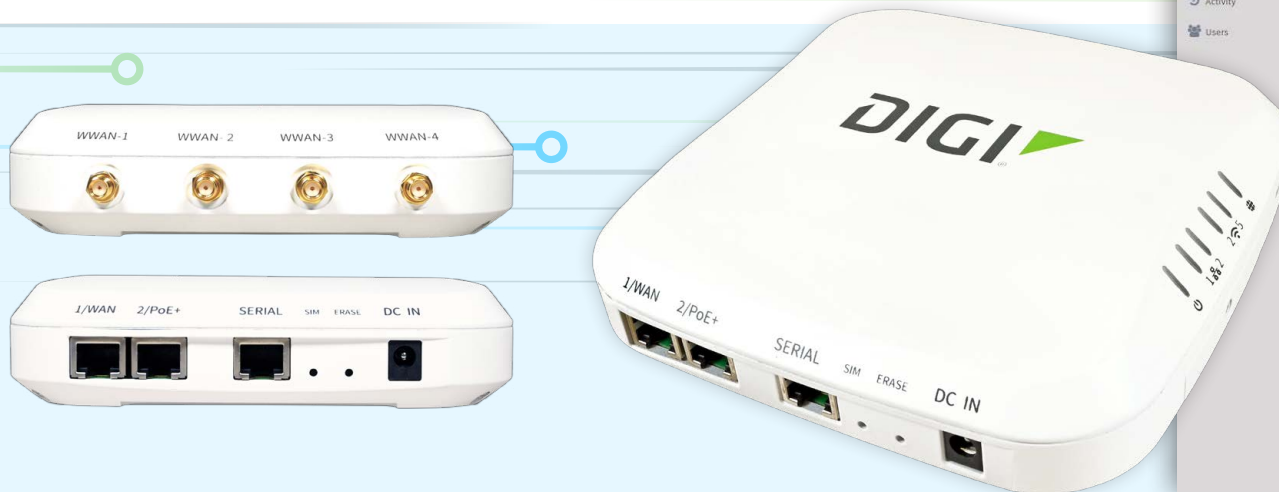
Connect workers and things everywhere. For IT-managed home offices, Digi delivers secure professional performance in a compact, easy-to-install, works-anywhere package. Best of all, Digi's solution allows for centralized network management, giving control and security no matter where the team works.

On The Go: IoT For Transit

Modern means connected. Digi offers an all-in-one solution for modern transportation systems. Redundant radios provide seamless failover or bandwidth aggregation across carriers. Plus, you can run multiple signals in parallel without crossover interference: Digi's go-to solution for transit orchestrates routing for on-board security video, infotainment, digital signage, fare collection, computer-aided dispatch (CAD), automated vehicle location (AVL), and public Wi-Fi — with excellent support for edge computing. And untethered dead reckoning combines GNSS with inertial sensors for accurate location, even in tunnels and urban canyons.

Fast, Flexible, Future-Proof.

Meet Your New, 5G Go-To Solutions.



Digi EX50 5G Cellular Router

Future-proof and ready for new use cases such as 5G network slicing, SD-WAN, 4K/8K cameras and AR/VR.

High-speed 5G NR and 4G LTE-Advanced Pro Cat 20 dual connectivity cellular radio

Wi-Fi 6 with WPA3 Personal and Enterprise security and dual 2.5 Gigabit Ethernet

Extended operating temperature for wider range of uses: -30° C to 60° C (-22° F to 140° F)

Standards-based Power over Ethernet (POE) simplifies installation

Multiple mounting options and accessories

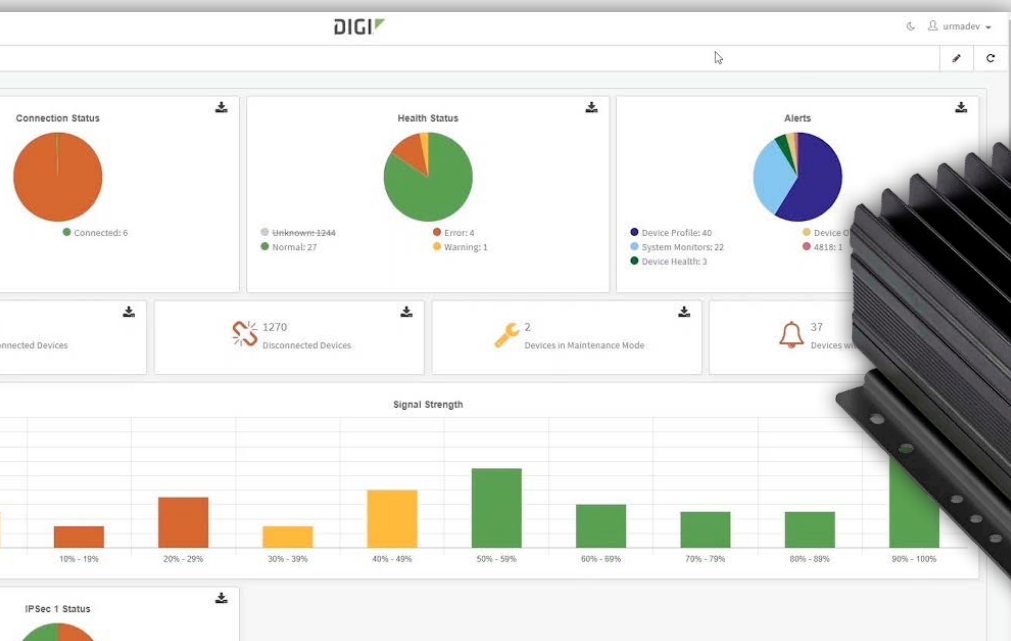
Serial port for remote, out-of-band management

Compact size: 158 mm x 158 mm x 35 mm (6.2 in x 6.2 in x 1.4 in)

Weight: 600 g (21 oz)

Securely deploy, monitor and control devices with Digi Remote Manager

Certified for emergency networks like AT&T FirstNet® and Verizon Frontline.



Digi TX64 5G/LTE Advanced Cellular Router

High-performance cellular router with dual redundant communication for complex transit and transportation systems.

Digi TX64 5G Rail Cellular Router

Railway-rated cellular router customized for on-board heavy and light rail railways and metros.

High-speed 5G NR cellular radio with 4G LTE-Advanced Pro Cat 20 and 3G fallback

FirstNet Ready™ for first responder communication

Digi WR44 RR drop-in replacement and upgrade

Untethered Dead Reckoning combines GNSS with inertial sensors for pinout location accuracy

Wired Gigabit M12 Ethernet (4-port) for on-board systems

Dual concurrent 867 Mbps 802.11ac Wi-Fi interfaces

Securely deploy, monitor and control devices with Digi Remote Manager



Digi Remote Manager

Transform a multitude of dispersed IoT devices into a dynamic, intelligent network. With Digi Remote Manager®, you can easily deploy, monitor and diagnose thousands of mission-critical devices from a single point of command — on your desktop, tablet or phone. All the while, its software-defined security diligently safeguards your entire Digi ecosystem.



Digi: Your Go-To 5G Connectivity.

**Get started today.
Contact your Digi account manager.**

FEATURES

- Schedule key operations — including firmware updates and file management — on a single device or on a group of devices, keeping your network functionality up-to-date and compliant with current standards
- Manage edge devices out-of-band via console terminal access
- Track device health and connectivity across device deployments of any size
- Create detailed reports and enable real-time alerts for specified conditions
- Integrate device data through open APIs to gain deeper insights and control with third-party applications
- Report and alert on performance statistics, including connection history, signal quality, latency, data usage and packet loss

INFRASTRUCTURE

- Hosted in a commercial-grade cloud server environment that meets SAC 1®, SOC 2® and SOC 3® standards
- Superior availability, operating to 99.9% or greater
- Open APIs available to support application development

SECURITY

- More than 175 security controls in place to protect your data
- Standard cryptographic co-processor with secure key generation and storage
- Member of the Center for Internet Security® (CIS®)
- Enables compliance with security frameworks like ISO27002, HIPAA, NIST and more
- Earned Skyhigh's CloudTrust™ Program highest rating of Enterprise-Ready

For more information, visit:

www.digi.com

877-912-3444 | 952-912-3444

© 1996-2022 Digi International Inc. All rights reserved.



91004391
A5/122