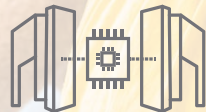




# Security and Reliability for Next-Gen Connected Health

Industry-leading Digi solutions are purpose-built for today's connected medical devices.



# Smarter Connectivity Makes Healthier Patients and Devices



## Secure, reliable connected devices are mission-critical to today's healthcare delivery

Patients are gaining new freedom as mobile medical devices and remote monitoring keep them under a physician's watchful care from anywhere. Doctors are empowered by connected equipment that gives them instant access to real-time information. And administrators are discovering new ways to manage distributed sites more efficiently while improving quality of care.

## Data integrity is job one

As systems become more connected, automated and integrated, data integrity is the top priority. Today's devices must be continually monitored to provide 24/7/365 protection against cyberthreats. Additionally, those devices must be remotely managed and updated as new security threats arise.



## Updates are automated

Digi is leading the way with security, remote monitoring and management through Digi Remote Manager, our solution for wireless device management. We provide secure, over-the-air (OTA) software updates to maintain your devices long after they are shipped and in use. And our robust library of APIs allows you to link your own application specific software, streamlining data collection, operations and maintenance.

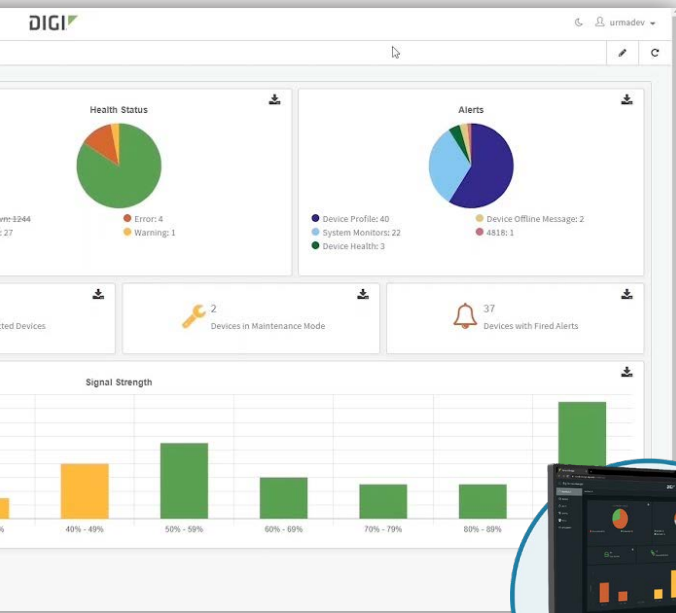




## Lower risk and downtime

Accessing Digi wireless modules, routers or gateways through Digi Remote Manager allows you to monitor, diagnose and repair devices remotely without trekking to the location, physically accessing the hosting equipment or handling the device.

Digi's single online performance dashboard lets you configure and troubleshoot devices across multiple locations, with alarms and reports to keep your products doing their jobs – treating patients.



## For All Your Challenges

# Digi Provides Your All-in-One Solution

Get top performance, reliability, and security plus industry-leading support. For OEMs, Digi has complete development and deployment support including development kits, design tools and comprehensive online documentation.

### SECURITY

Digi layers security at every level to quickly adapt to changing regulations and ever-evolving security threats, with the sophisticated features of the Digi TrustFence security framework:

- ✓ Secure boot and best-in-class encryption
- ✓ Secure element crypto authentication
- ✓ FIPS 140-3 certification
- ✓ Notification of Common Vulnerabilities and Exposures (CVEs) and how they affect Digi products

### CONNECTIVITY

Digi is your trusted connectivity expert with a global portfolio of wireless OEM modules, gateways, supported wireless protocols, and cellular routers.

- ✓ Integrated, pre-certified Wi-Fi and Bluetooth
- ✓ Seamless integration with Digi XBee wireless modules
- ✓ Digi Remote Manager support for secure OTA software updates

### MOBILITY

Digi continually resets the bar in power management to ensure constant connectivity does not limit mobility.

- ✓ Digi SMTPlus ultra-compact footprint for product portability
- ✓ Digi Microcontroller Assist power management and ultra-low power modes
- ✓ Software support for advanced low-power profiles

### RELIABILITY

Digi's world-proven testing processes mean our devices pass certifications to help ensure "always on" service.

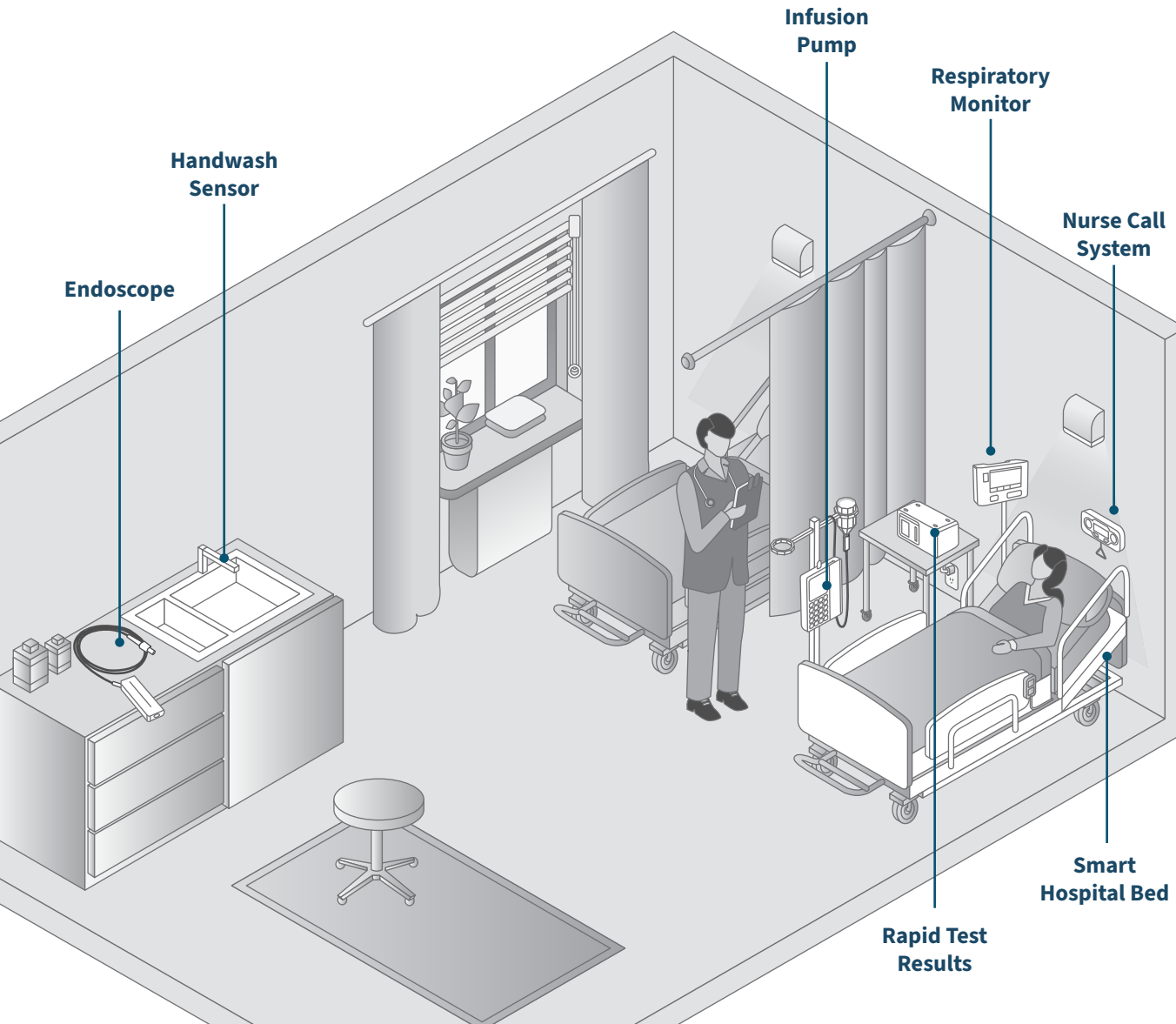
- ✓ Industry-leading 3-year warranty
- ✓ Shock/vibration/HALT tested
- ✓ Industrial components standard with temp rating from -40 to 85° C
- ✓ Duty rated to run 24/7/365 in demanding applications

# The Digi Medical Landscape

Connecting ideas and devices everywhere



Medical devices with Digi connectivity can provide data in real time or on demand — from anywhere. Combine Digi solutions with your go-to-market vision, and let your imagination run wireless.



## Do more with next-generation modules.

**Ultra-compact System-on-Modules (SOMs)** plus developer tools and software libraries offer maximum design flexibility. Embed connectivity and bypass major redesign for succeeding generations of products with the **Digi ConnectCore 8** family of SOMs.



## Get to market faster. Much faster.

**Digi Wireless Design Services** can provide wireless engineering expertise, our world-class RF lab, and our library of proven IP. Pass FCC and carrier certifications the first time.



## Secure connections from anywhere.

Compact **Digi XBee RF modules and IoT gateways** enable continuous network connectivity to provide remote patient monitoring for caregivers and hospital staff. Go beyond the limitations of GPS to track the precise location of high-value mobile equipment in real time.



# Partner with the proven leader.

Digi has successfully connected over 100 million devices in highly regulated industries like healthcare around the globe. Connectivity, mobility, efficiency and security are the Digi DNA you can seamlessly add to any device.



## Manufacturing Quality Assurance

Digi manufacturing facilities and processes adhere to rigorous industry certifications and regulations to assure consistent product quality.



For more information, visit:

[www.digi.com](http://www.digi.com)

877-912-3444 | 952-912-3444

© 2026 Digi International Inc. All rights reserved.

**DIGI**

91004523  
B2/626