



# Digi Cellular Connectivity Services

Cellular Connectivity Simplified

## Simple, Stress-free Connection to Most Global Carrier Networks

### Overview

Digi delivers simple, cost-effective, and accelerated cellular connectivity services in over 214 countries worldwide.

#### Simple Cellular Connectivity

Navigating global cellular contracts and multiple-partner solutions can be complex and burdensome. With Digi Connectivity Services, all the necessary arrangements have already been established. Our services are fully operational and ready for deployment when you need them.

#### Cost-Effective Resolution

Cellular connectivity can become costly if not executed correctly. Avoid unnecessary expenses for setup fees, overages, or additional configuration charges. Our experts can assist you in optimizing the size of your connectivity service to ensure your operations run efficiently.

#### Accelerated Time-to-Value

Improve the speed at which you establish connectivity. Acquire an operational SIM card in as little as two days and have it set up on the very same day.

#### Peace of Mind with Digi Support

Utilize Digi's skilled technical support personnel to ensure dependable and efficient assistance.



Coverage in  
210+ Countries



Simple Cellular  
Connectivity



Cost-Effective  
Solution



Accelerated  
Time to Value

Explore our [Managed Connectivity services](#) →

For more information, visit:

[www.digi.com](http://www.digi.com)

877-912-3444 | 952-912-3444

© 2024 Digi International Inc. All rights reserved.



# Specifications

Carrier	Region	Tier	Part Number	Notes
AT&T	Global	MAF	CELL-ATT-MAF	AT&T Global Pay Per Use Access Fee (paid monthly to maintain service)
AT&T	Global	DATA	CELL-US-AT-USAGE	AT&T Global Pay Per Use Data Cost (paid monthly after data use calculation)
AT&T	Global	1MB	CELL-GL-ATT-1MB	AT&T Global Pooled Data Plan (1 MB per device)
AT&T	Global	2MB	CELL-GL-ATT-2MB	AT&T Global Pooled Data Plan (2 MB per device)
AT&T	Global	5MB	CELL-GL-ATT-5MB	AT&T Global Pooled Data Plan (5 MB per device)
AT&T	Global	10MB	CELL-GL-ATT-10MB	AT&T Global Pooled Data Plan (10 MB per device)
AT&T	Global	25MB	CELL-GL-ATT-25MB	AT&T Global Pooled Data Plan (25 MB per device)
AT&T	Global	50MB	CELL-GL-ATT-50MB	AT&T Global Pooled Data Plan (50 MB per device)
AT&T	Global	100MB	CELL-GL-ATT-100MB	AT&T Global Pooled Data Plan (100 MB per device)
AT&T	Global	300MB	CELL-GL-ATT-300MB	AT&T Global Pooled Data Plan (300 MB per device)
AT&T	Global	500MB	CELL-GL-ATT-500MB	AT&T Global Pooled Data Plan (500 MB per device)
AT&T	North America	1GB	CELL-NA-ATT-1GB	AT&T North America Pooled Data Plan (1 GB per device)
AT&T	North America	5GB	CELL-NA-ATT-5GB	AT&T North America Pooled Data Plan (5 GB per device)
AT&T	North America	10GB	CELL-NA-ATT-10GB	AT&T North America Pooled Data Plan (10 GB per device)
Verizon	North America	MAF	CELL-VZW-MAF	Verizon North America Pay Per Use Access Fee (paid monthly to maintain service)
Verizon	North America	DATA	CELL-US-VZ-USAGE	Verizon North America Pay Per Use Data Cost (paid monthly after data use calculation)
Verizon	North America	1MB	CELL-US-VZW-1MB	Verizon North America Pooled Data Plan (1 MB per device)
Verizon	North America	2MB	CELL-US-VZW-2MB	Verizon North America Pooled Data Plan (2 MB per device)
Verizon	North America	5MB	CELL-US-VZW-5MB	Verizon North America Pooled Data Plan (5 MB per device)
Verizon	North America	10MB	CELL-US-VZW-10MB	Verizon North America Pooled Data Plan (10 MB per device)
Verizon	North America	25MB	CELL-US-VZW-25MB	Verizon North America Pooled Data Plan (25 MB per device)
Verizon	North America	50MB	CELL-US-VZW-50MB	Verizon North America Pooled Data Plan (50 MB per device)
Verizon	North America	100MB	CELL-US-VZW-100MB	Verizon North America Pooled Data Plan (100 MB per device)
Verizon	North America	300MB	CELL-US-VZW-300MB	Verizon North America Pooled Data Plan (300 MB per device)
Verizon	North America	500MB	CELL-US-VZW-500MB	Verizon North America Pooled Data Plan (500 MB per device)

For more information, visit:

[www.digi.com](http://www.digi.com)

877-912-3444 | 952-912-3444



## secureSIM

Protect your connectivity service with additional security features (available upon request):

- SIM Lock is a cloud-based security feature that pairs your SIM with your device, ensuring that it cannot be removed and used in unintended ways
- Metrics-based actions such as usage threshold limitations take rogue devices temporarily out of service, creating a safety valve for out-of-control data usage
- Proactive alerts warn you if your data usage is nearing important levels, or if devices are behaving erratically

*Note: secureSIM is not available on Verizon*

## Ordering Info

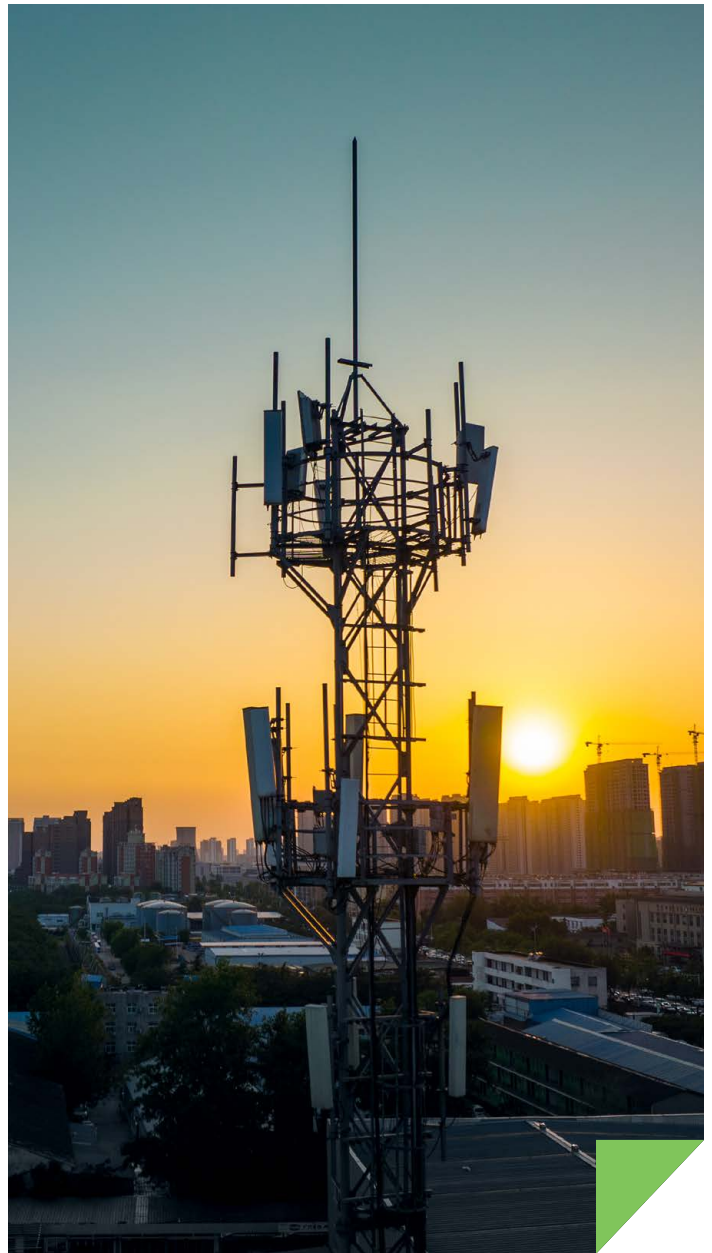
Contact a [Digi services expert](#) to learn about compatible Digi devices.

## About Digi

As an IoT solutions provider, Digi puts proven technology to work for our customers so they can light up networks and launch new products. Machine connectivity that's relentlessly reliable, secure, scalable and managed — and always comes through when you need it most. That's Digi.

## Contact Us

[Contact a Digi expert](#) to get started.



For more information, visit:

[www.digi.com](http://www.digi.com)

877-912-3444 | 952-912-3444

© 2024 Digi International Inc. All rights reserved. 91004649 A4/1024

**DIGI**